

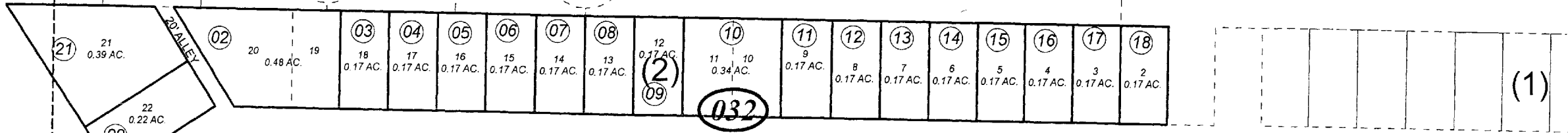
POR. SEC. 25, T06N, R12W, S.M.

039-030

SIT

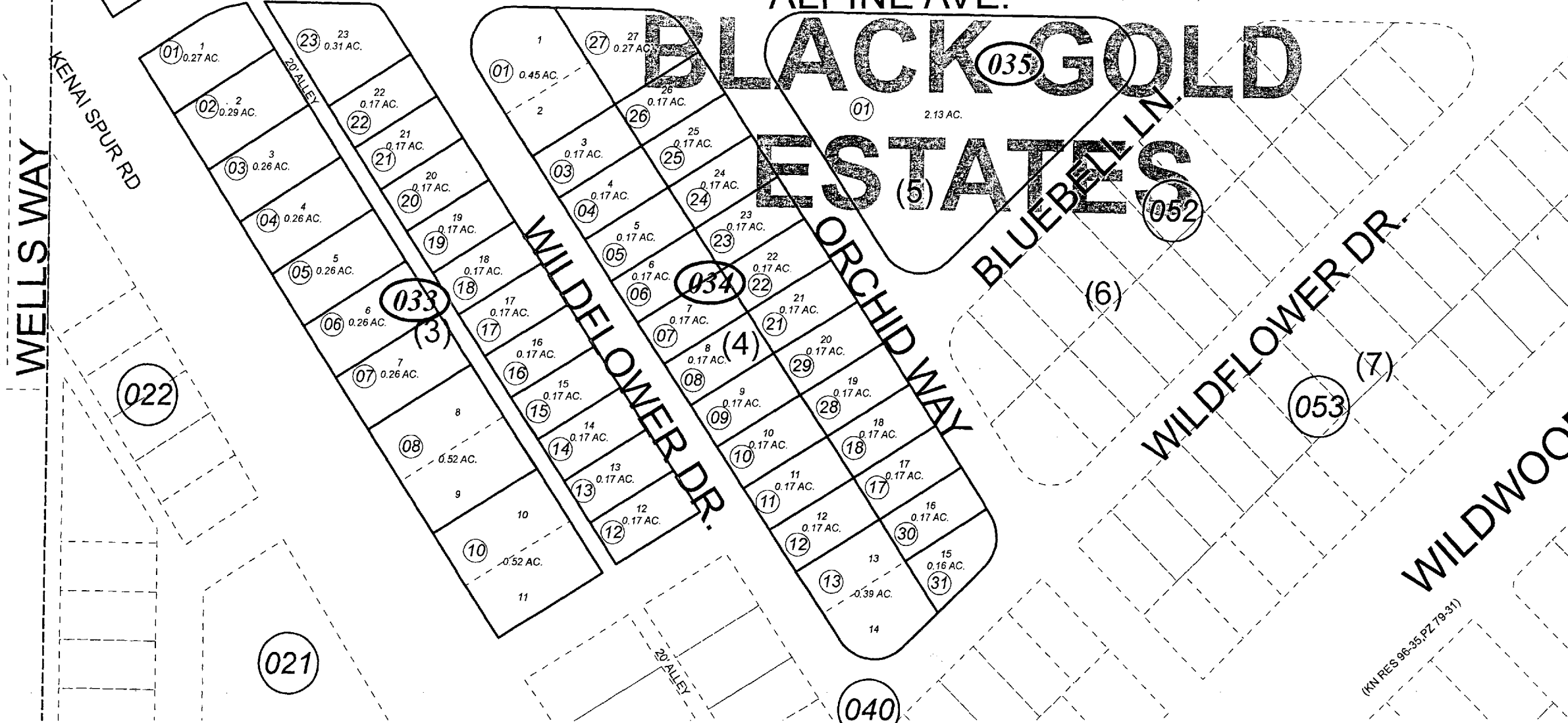
AKI

010



ALPINE AVE. (KN RES 96-35)

# BLACK GOLD ESTATES



DR.

WELLS WAY

KENAI SPUR RD

022

021

040

(KN RES 96-35 PZ 79-31)



JANUARY 14, 2010		
For 2010 assessment roll		
Delete	Add	Revise
To		
03219		

Assessor's Map  
Kenai Peninsula Borough

BLACK GOLD ESTATES SUB AMENDED KN0001399

This map is prepared for Kenai Peninsula Borough Assessing Dept. use only and is not intended for conveyance nor is it a survey.

Note- Assessor's block Numbers Shown in Ellipses  
Assessor's Parcel Numbers Shown in Circles