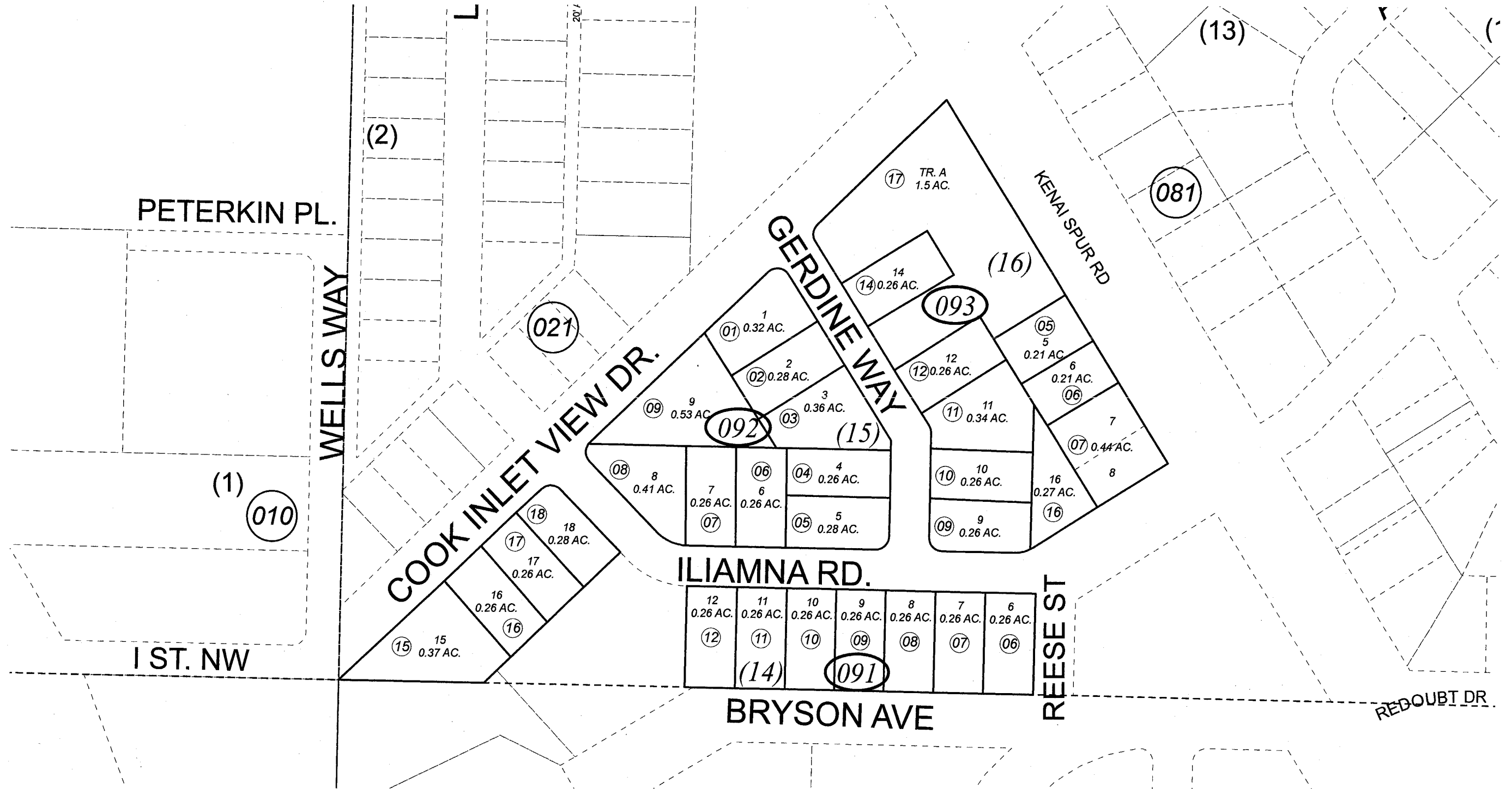


POR. SEC. 25, T06N, R12W, S.M.

039-090



JANUARY 22, 2008

For 2008 assessment roll

Delete	Add	Revise

To	
09101-05	043012+
09113, 14	

Assessor's Map
Kenai Peninsula Borough

BK
043

CARL F AHLSTROM SUB KN0000216
 CARL F AHLSTROM SUB VACATION OF PARKS KN0780125
 CARL F AHLSTROM CHURCH OF GOD REPLAT KN0980052

This map is prepared for Kenai Peninsula Borough Assessing Dept. use only and is not intended for conveyance nor is it a survey.

Note- Assessor's block Numbers Shown in Ellipses
 Assessor's Parcel Numbers Shown in Circles