

POR. SEC. 32, T05N, R10W, S.M.

060-180

SOLDOTNA

JUN

JUNCTION SUB

010

170

(4)

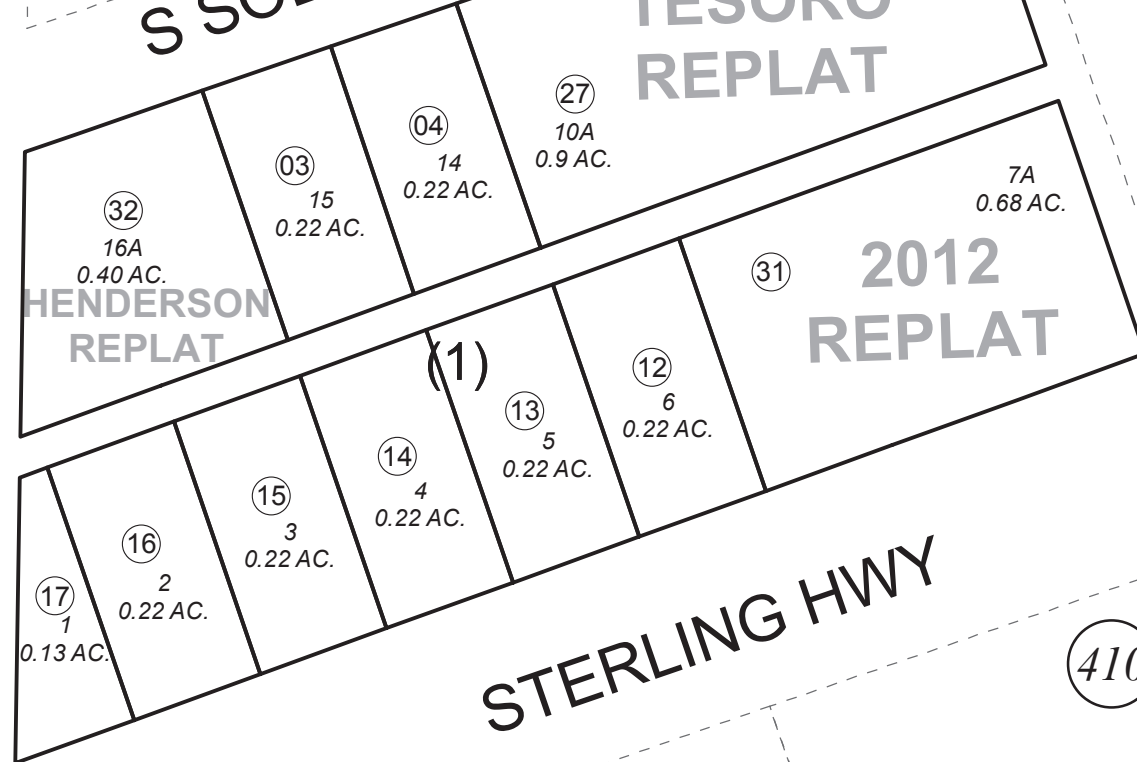
190

S BIRCH ST

S SOLDOTNA AVE

TESORO REPLAT

NO.9



RALPH SOBERG PROPERTY
STENGA BROS. ADDN. NO. 2

100

SOLDO

STERLING HWY

410

ADDN. NO.

SOLDOTNA CREEK
PARK SUBD.

240

JANUARY 3, 2018

For 2018 assessment roll		
Delete	Add	Revise
To		
01,02	32	



0 50 100 Feet

Assessor's Map
Kenai Peninsula Borough

SOLDOTNA JUNCTION SUB KN0000076
 SOLDOTNA JUNCTION SUB TESORO REPLAT KN0990025
 SOLDOTNA JUNCTION SUB 2012 REPLAT KN2012099
 SOLDOTNA JUNCTION SUB HENDERSON REPLAT KN2017070

This map is prepared
 for Kenai Peninsula
 Borough Assessing Dept.
 use only and is not
 intended for conveyance
 nor is it a survey.

Note- Assessor's block Numbers Shown in Ellipses
 Assessor's Parcel Numbers Shown in Circles