

POR. SEC. 32, T05N, R10W, S.M.

**ADDN.**

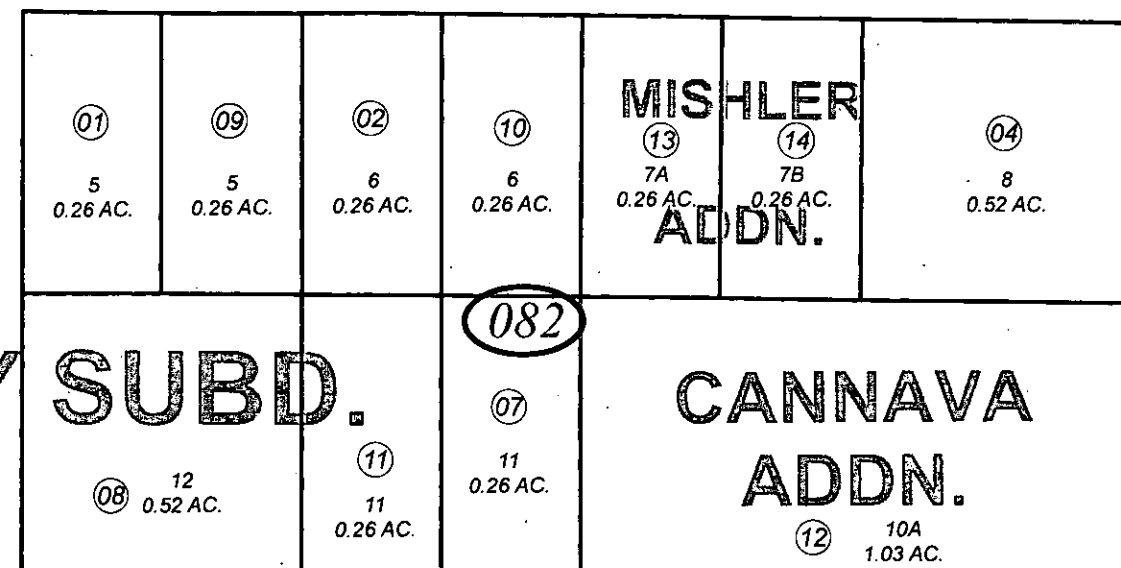
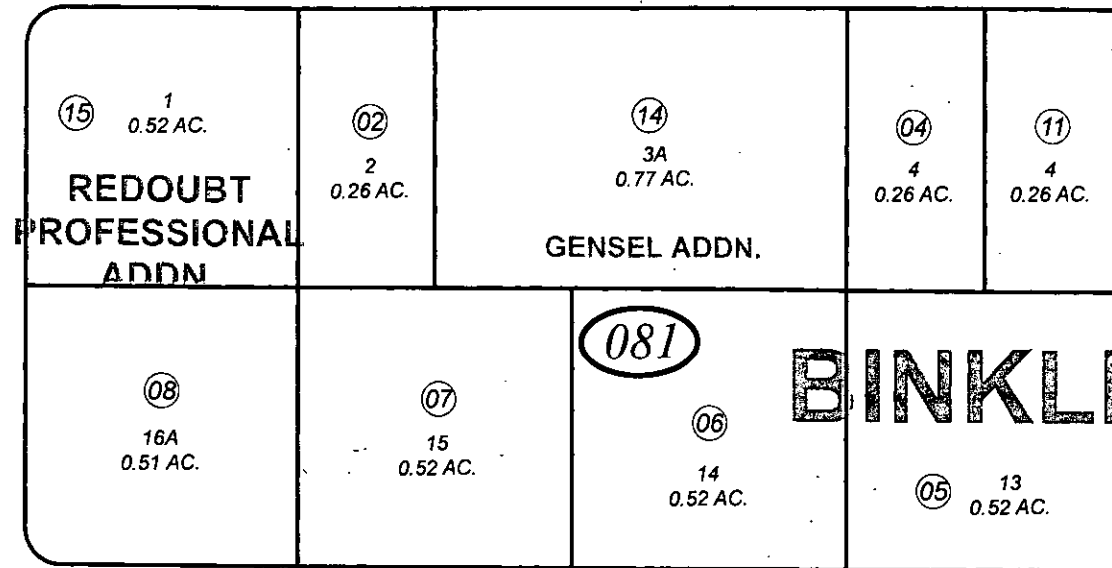
**BK**  
**059**

060-080

**SUBD.**

SEC. 29  
SEC. 32

E REDOUBT AVE

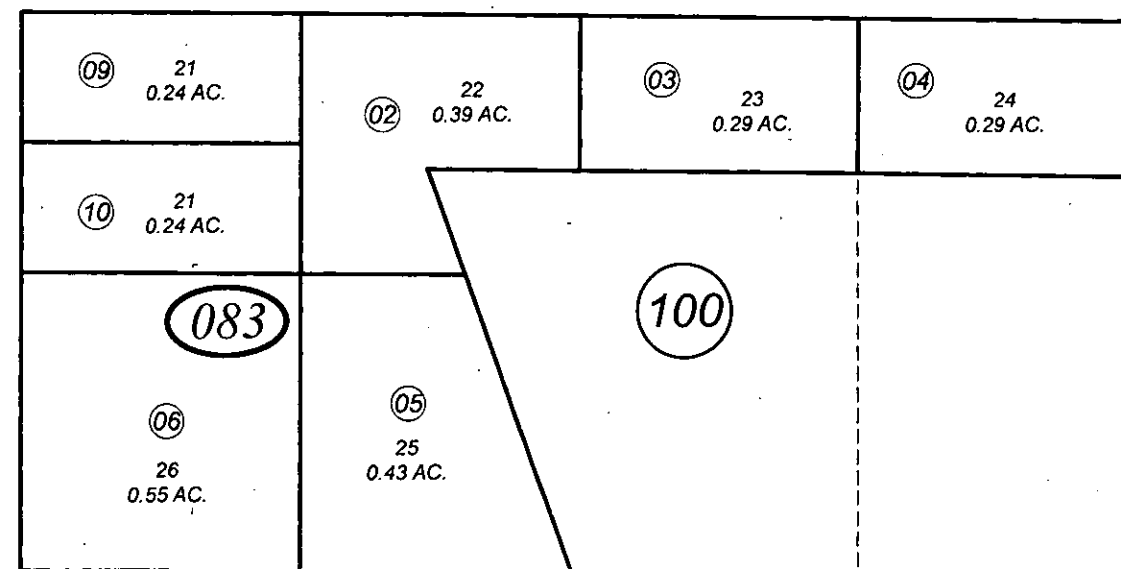
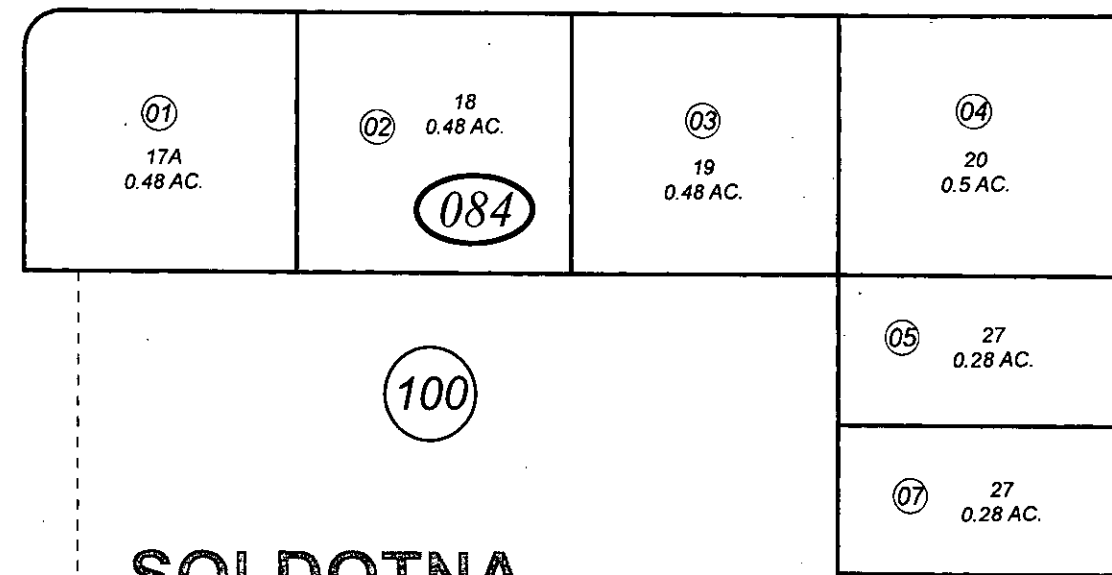


ROBIN PL

**BINKLEY SUBD.**

**CANNAVA ADDN.**

E BELUGA AVE



S BINKLEY ST

S BIRCH ST

LITTLE AVE

**SOLDOTNA**

JULY 6, 2011

For 2012 assessment roll		
Delete	Add	Revise
To		
082-03	082-13 082-14	

Assessor's Map  
Kenai Peninsula Borough

BINKLEY SUB KN0000332  
 BINKLEY STREET/SHADY LANE ROW DEDICATION KN0880040  
 BINKLEY SUB GENSEL ADDN KN0970082  
 BINKLEY SUB REDOUBT PROFESSIONAL ADDN KN2005063  
 BINKLEY SUB CANNAVA ADDN KN2010061  
 BINKLEY SUB MISHLER ADDN KN2011024

This map is prepared for Kenai Peninsula Borough Assessing Dept. use only and is not intended for conveyance nor is it a survey.

Note- Assessor's block Numbers Shown in Ellipses  
 Assessor's Parcel Numbers Shown in Circles



1 inch = 100 feet

(062)

(071)

(200)

(100)