

POR. SEC. 22, T05N, R09W, S.M.

063-610

870

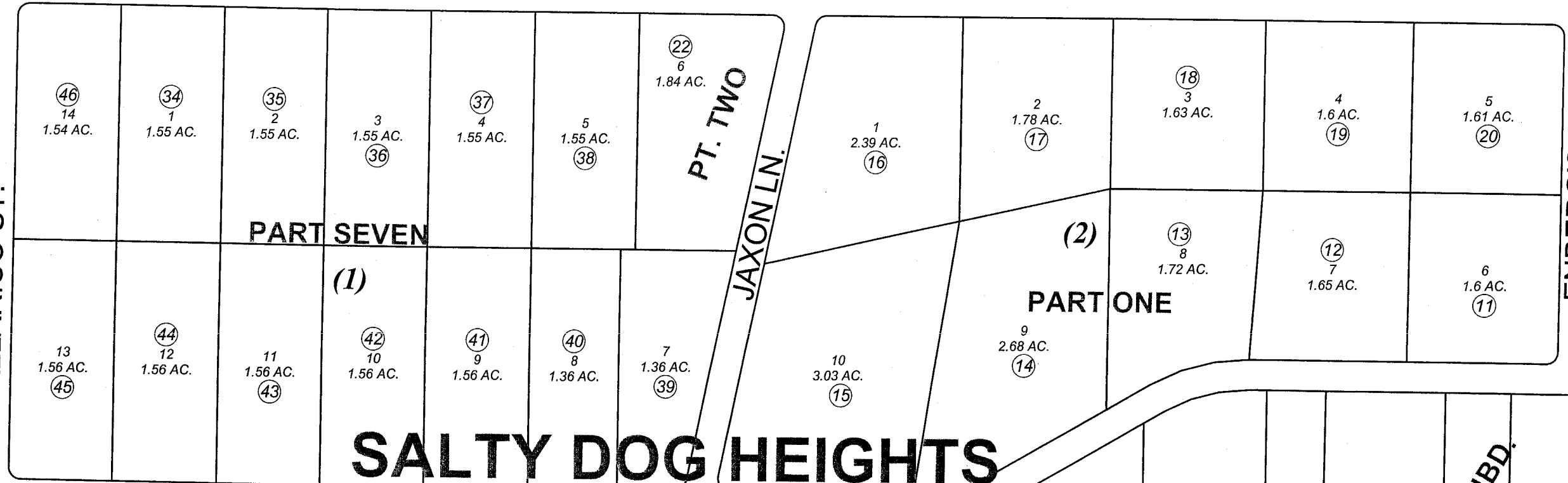
16 15  
21 22

MORGAN RD.

TALLARICO ST.

ENBERG'S ST.

150

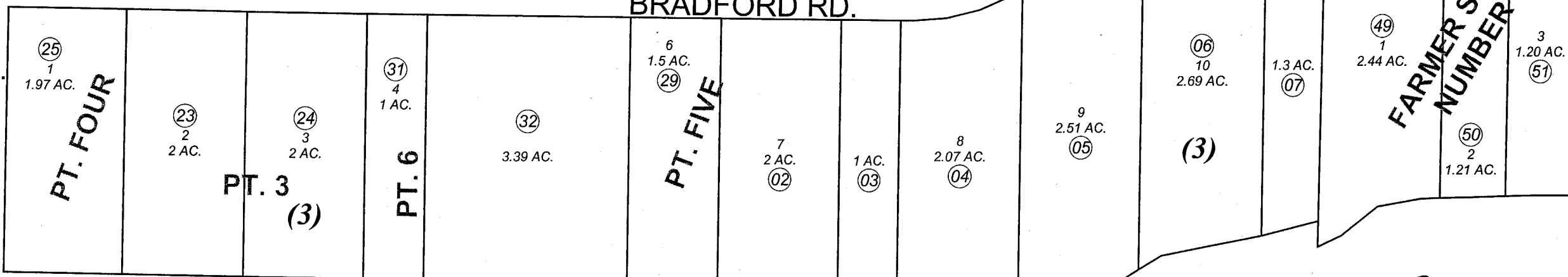


BRADFORD RD.

3D.

480

ERRY CT.



CAYMAS SUBDIVISION

611

KENAI RIVER



JANUARY 8, 2004

For 2004 assessment roll		
Delete	Add	Revise
To		
47,48	49-51	

Assessor's Map  
Kenai Peninsula Borough

- SALTY DOG HEIGHTS SUB PART 1 □ KN0780030
- SALTY DOG HEIGHTS PART 2 □ KN0790105
- SALTY DOG HEIGHTS PART 3 □ KN0790143
- SALTY DOG HEIGHTS PART 4 □ KN0800008
- SALTY DOG HEIGHTS PART 5 □ KN0840166
- SALTY DOG HEIGHTS SUB PART 6 □ KN0890045
- SALTY DOG HEIGHTS SUB PART 7 □ KN0920082
- FARMER SUB NO 5 □ KN2003105

This map is prepared for Kenai Peninsula Borough Assessing Dept. use only and is not intended for conveyance nor is it a survey.

Note- Assessor's block Numbers Shown in Elipses  
Assessor's Parcel Numbers Shown in Circles