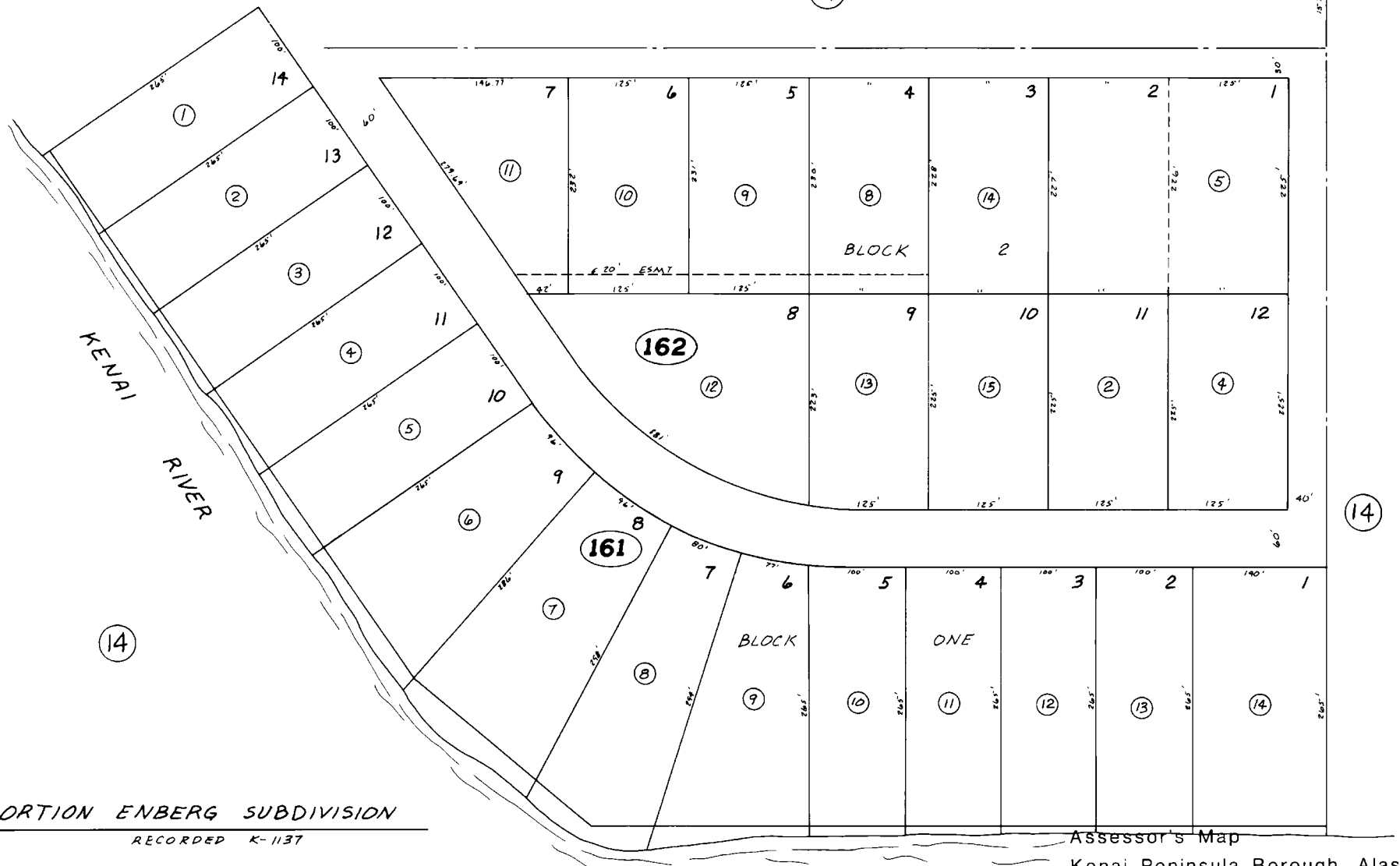


POR. S.1/2, NE.1/4, SEC. 22, T.5 N, R.9 W, S.M.

063 - 16

SEC. COR.
15 14
22 23

14



PORTION ENBERG SUBDIVISION
RECORDED K-1137

Assessor's Map
Kenai Peninsula Borough, Alaska

NOTE - Assessor's Block Numbers Shown in Ellipses
Assessor's Parcel Numbers Shown in Circles