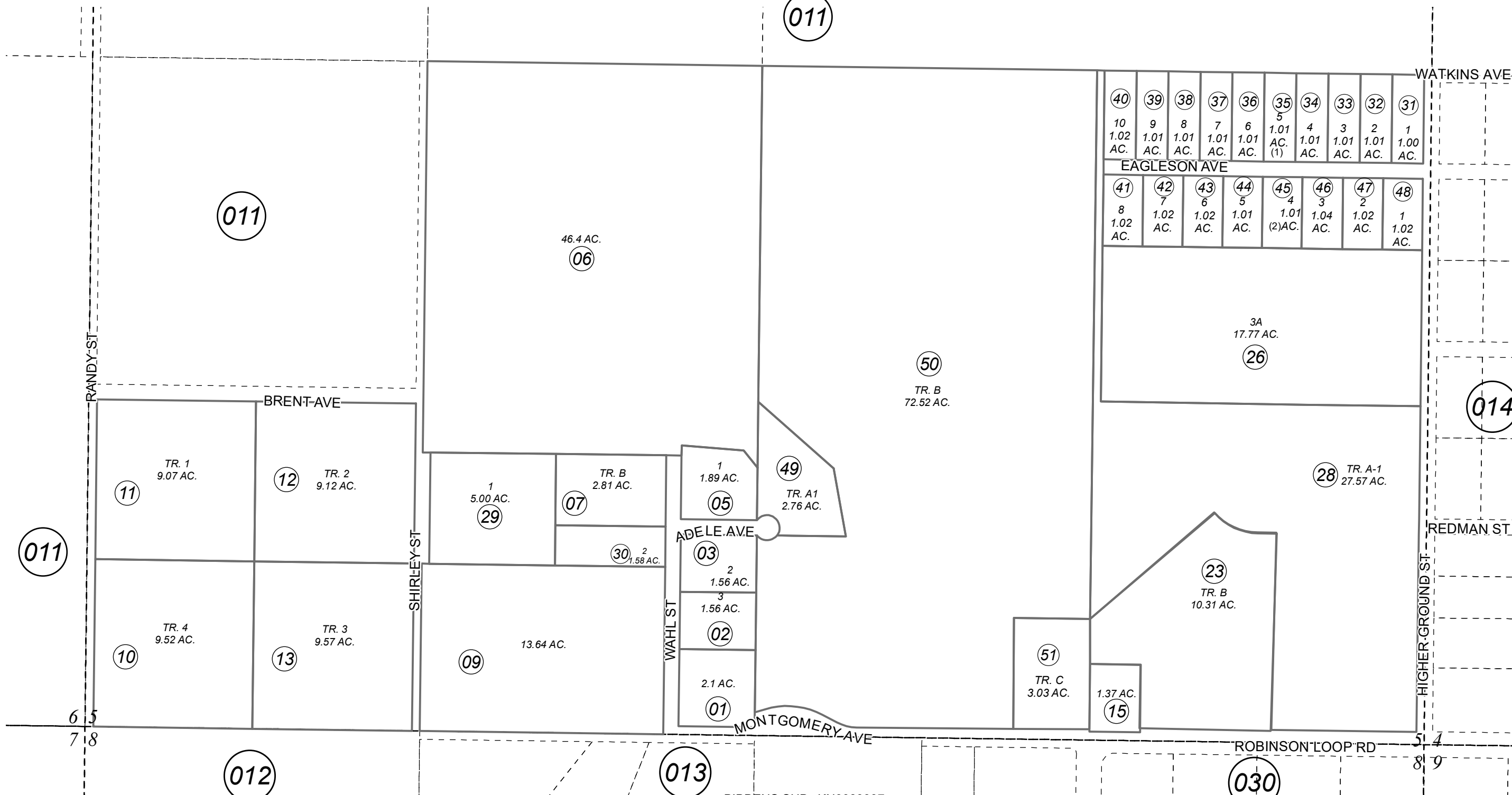


POR. S1/2 SEC. 5, T05N, R09W, S.M.

063-016



0 100 200 400 Feet

JULY 31, 2023

For 2023 assessment roll		
Delete	Add	Revise
	To	
04,14	49-51	

Assessor's Map  
 Kenai Peninsula Borough

- BIBBENS SUB □ KN0080007
- MONTGOMERY HOMESTEAD □ KN0760046
- MONTGOMERY HOMESTEAD □ KN0770112
- BIBBENS SUB □ KN0800007
- MONTGOMERY HOMESTEAD SUB THIRD ADDN □ KN0850235
- JI-ANNA SUB PHASE 1 □ KN2001042
- JI-ANNA SUB PHASE 2 □ KN2004082
- JI-ANNA SUB PHASE 3 □ KN2006024
- JI-ANNA SUB PHASE 4 □ KN2006070
- MONTGOMERY HOMESTEAD BAGLEY ADDN □ KN2007067
- JI-ANNA SUB ROADY ADDN □ KN2019062
- WAHL SUB □ KN2023034

This map is prepared for Kenai Peninsula Borough Assessing Dept. use only and is not intended for conveyance nor is it a survey.

Note- Assessor's block Numbers Shown in Ellipses  
 Assessor's Parcel Numbers Shown in Circles