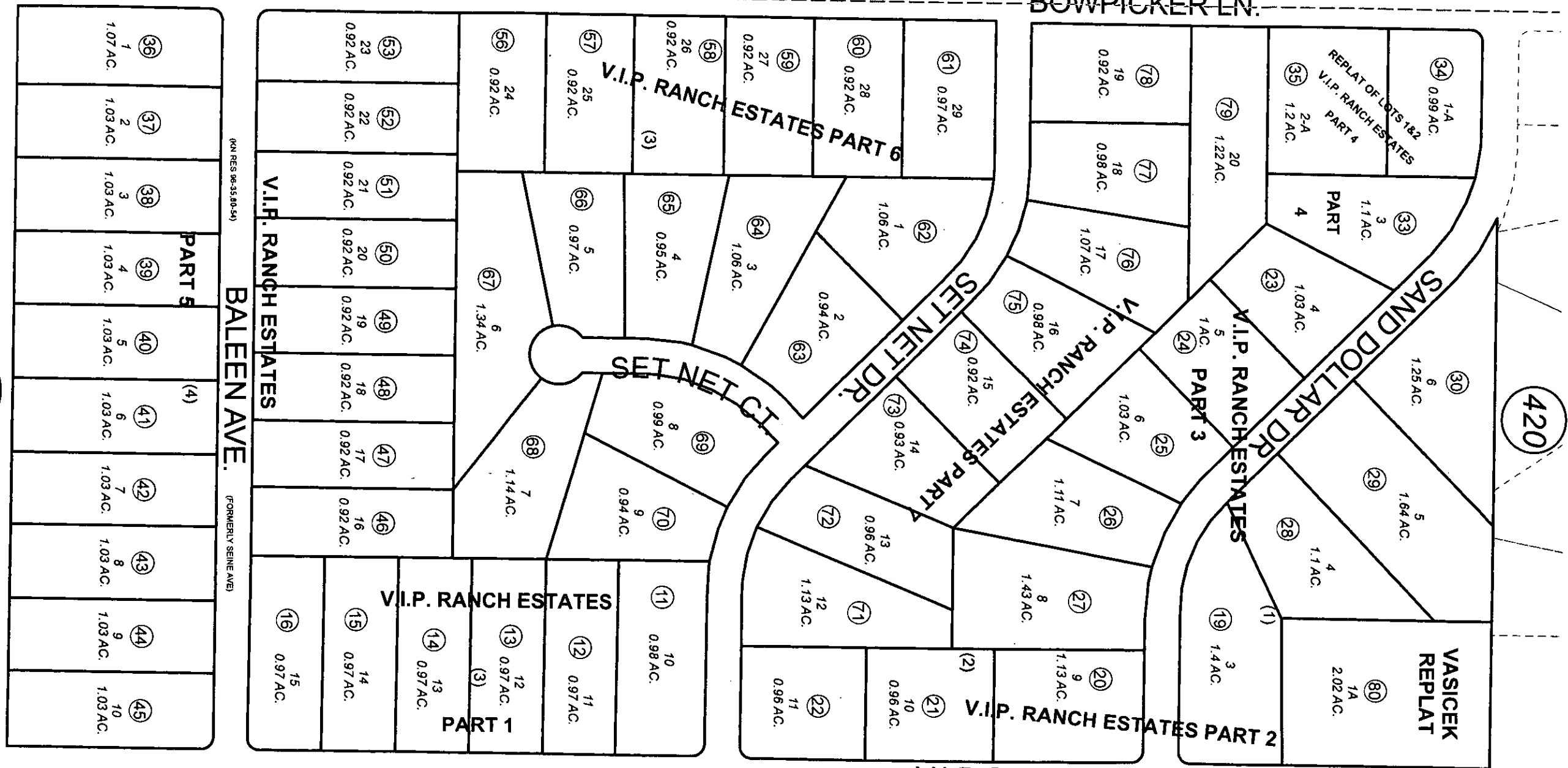


18117
19120
BK
055

BK
055



DECEMBER 28, 2011

For 2012 assessment roll		
Delete	Add	Revise
	To	
17,18	80	



1" = 200 feet

Assessor's Map
Kenai Peninsula Borough

- V I P RANCH ESTATES SUB PART 1 KN0760169
- V I P RANCH ESTATES SUB PART 2 KN0770051
- V I P RANCH ESTATES SUB PART 3 KN0770135
- V I P RANCH ESTATES SUB PART 4 KN0790070
- V I P RANCH ESTATES SUB PART 4 REPLAT KN0800074
- V I P RANCH ESTATES SUB PART 5 KN0800101
- V I P RANCH ESTATES SUB PART 6 KN0810099
- V I P RANCH ESTATES PART 7 KN0820007
- V I P RANCH ESTATES SUB PART 7 KN0820007
- V I P RANCH ESTATES VASICEK REPLAT KN2011088

Note- Assessor's block Numbers Shown in Elipses
Assessor's Parcel Numbers Shown in Circles

This map is prepared
for Kenai Peninsula
Borough Assessing Dept.
use only and is not
intended for conveyance
nor is it a survey.