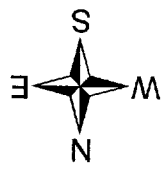


POR. SEC. 34, T06N, R11W, S.M.

045-080

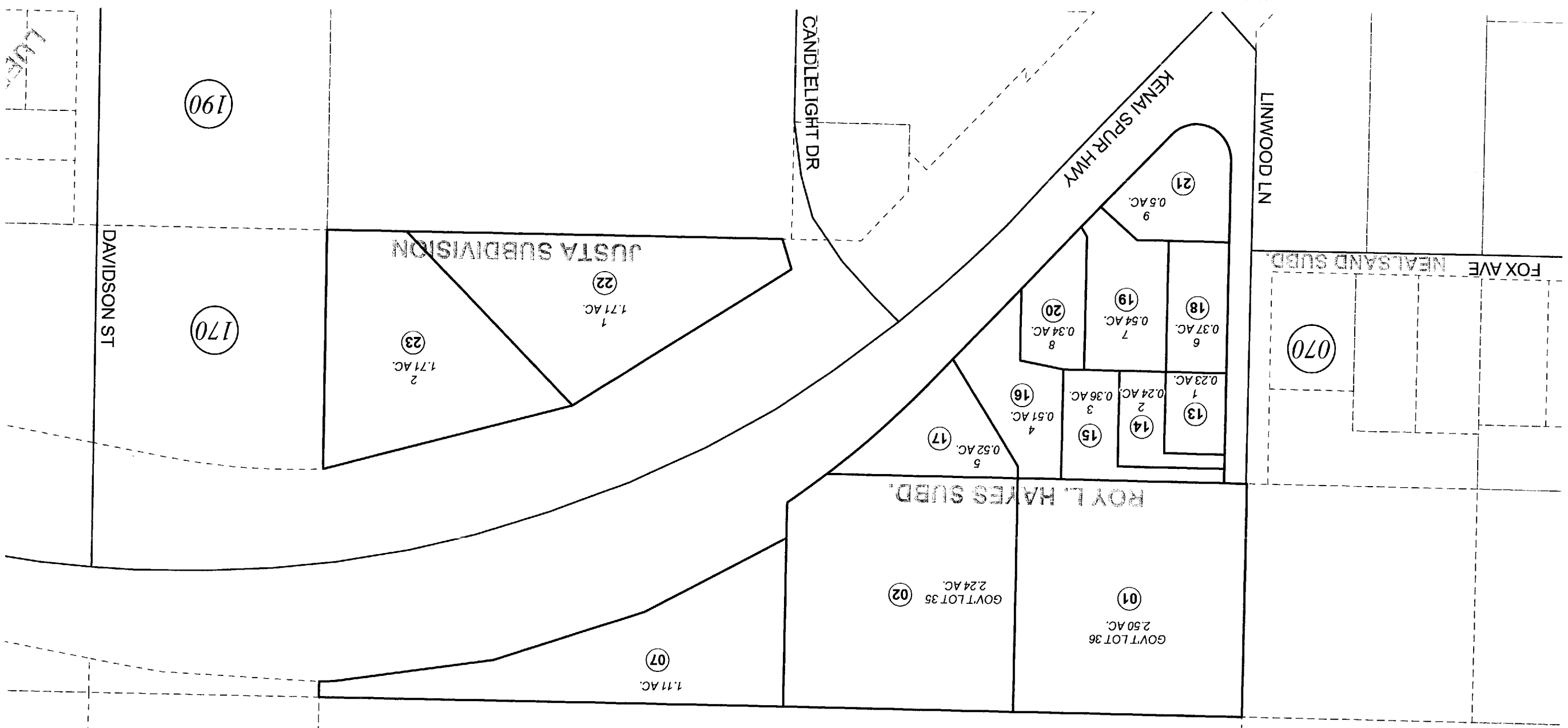


For 2011 assessment roll		
Delete	Add	Revise
To		
08	22.23	

Assessor's Map
Kenai Peninsula Borough

ROY L HAYES SUB KN0940038
JUSTA SUB KN2010093

This map is prepared for Kenai Peninsula Borough Assessing Dept. use only and is not intended for conveyance nor is it a survey.
Note- Assessor's block Numbers Shown in Ellipses
Assessor's Parcel Numbers Shown in Circles



100

190

170

070

010