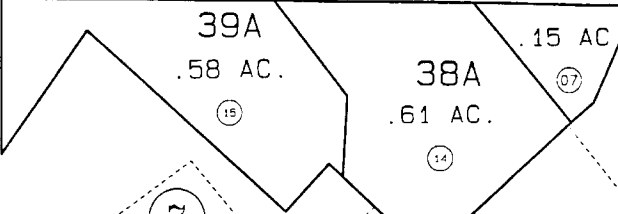
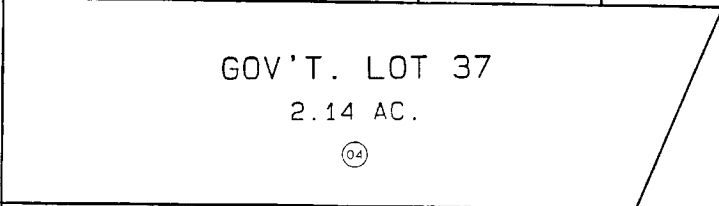
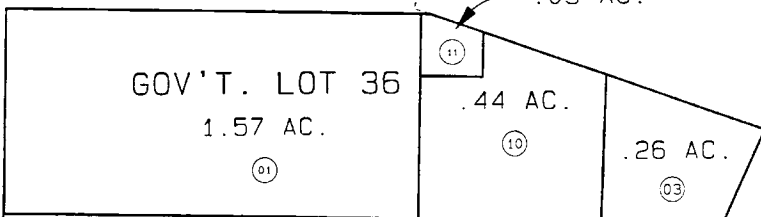


PORTION OF SEC. 6, T5N, R11W, SEWARD MERIDIAN

047-040

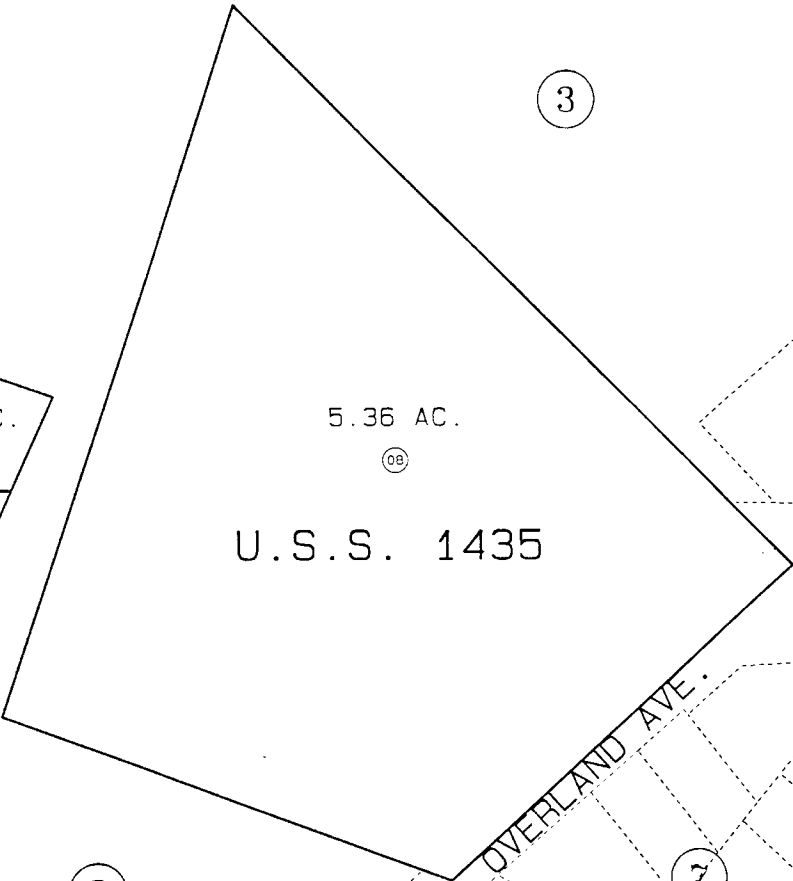
21ST AVE. S.W.

1



7

DOLCHOK AMENDED



OVERLAND AVE.

3

7



DATE: JAN. 27, 1997

|                           |     |         |
|---------------------------|-----|---------|
| FOR 19 97 ASSESSMENT ROLL |     |         |
| DELETE                    | ADD | REVISED |
| TO                        |     |         |
| 12,13,16 047030+          |     |         |

Assessor's Map  
Kenai Peninsula Borough

DOLCHOK AMENDED KN800029  
U.S.S. 1435 KNU01435

THIS MAP IS PREPARED FOR KENAI PENINSULA BOROUGH ASSESSING DEPT. USE ONLY AND IS NOT INTENDED FOR ANY OTHER USE OR REPRESENTATION

NOTE - Assessor's Block Numbers Shown In Ellipses  
Assessor's Parcel Numbers Shown In Circles