

NW 1/4 NW 1/4 SEC. 34, T05N, R10W, S. M.

BK
059

060-344

FORSI SUBD.

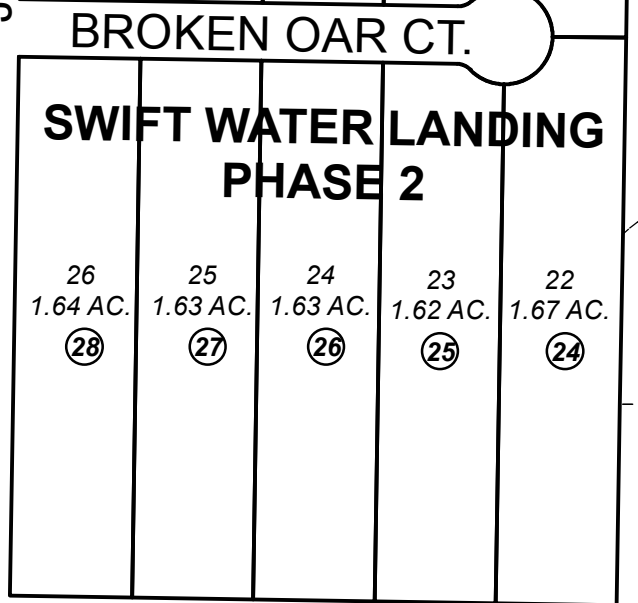
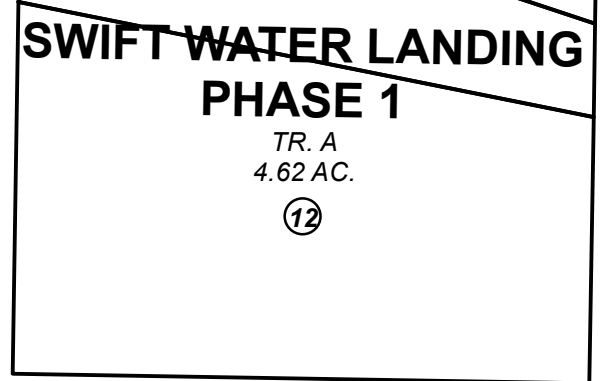
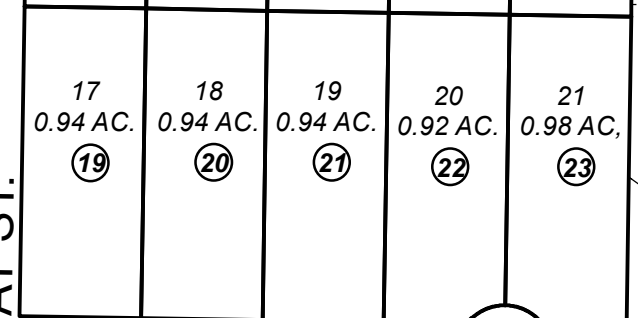
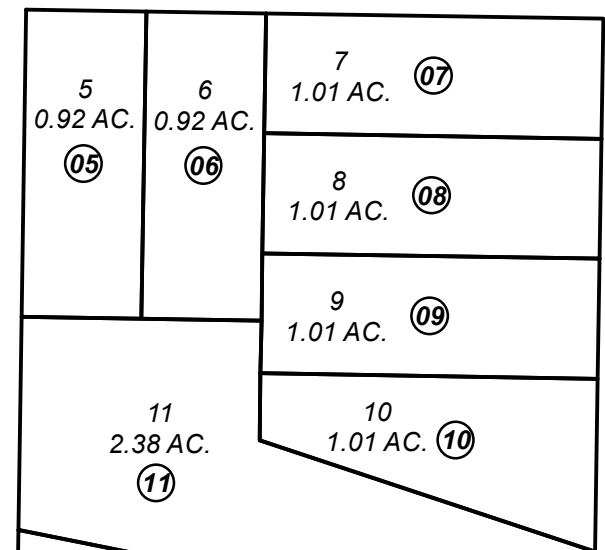
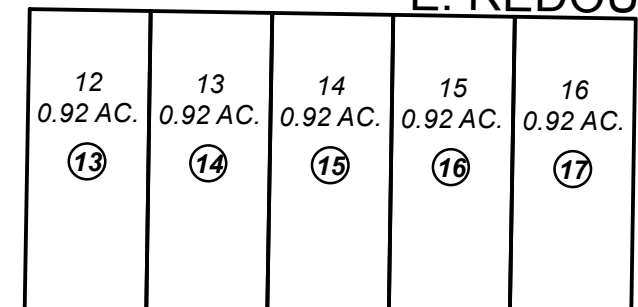
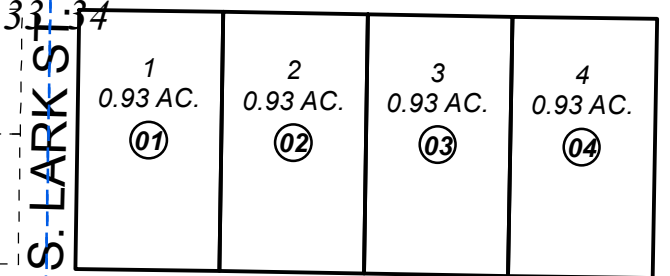
E. REDOUBT AVE.

E. REDOUBT AVE.

IART SUBD.
RINEHART ST.

HESTER AVE.

FARGO AVE.



SWIFT AVE.

REGENCY CT.
KENAI RIVER EST.

ATES DR.

(320)

(13)(320)

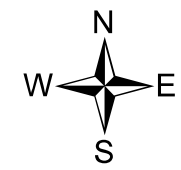
(340)

(343)

(390)

JUNE 23, 2017

For 2018 assessment roll		
Delete	Add	Revise
To		
18	19-28	



0 45 90 180 Feet

Assessor's Map
Kenai Peninsula Borough

SWIFT WATER LANDING PHASE 1 KN2016010
SWIFT WATER LANDING PHASE 2 KN2017027

This map is prepared for Kenai Peninsula Borough Assessing Dept. use only and is not intended for conveyance nor is it a survey.
Note- Assessor's block Numbers Shown in Ellipses
Assessor's Parcel Numbers Shown in Circles