

N 1/2 NW 1/4 SEC. 1, T04N, R11W, S.M.

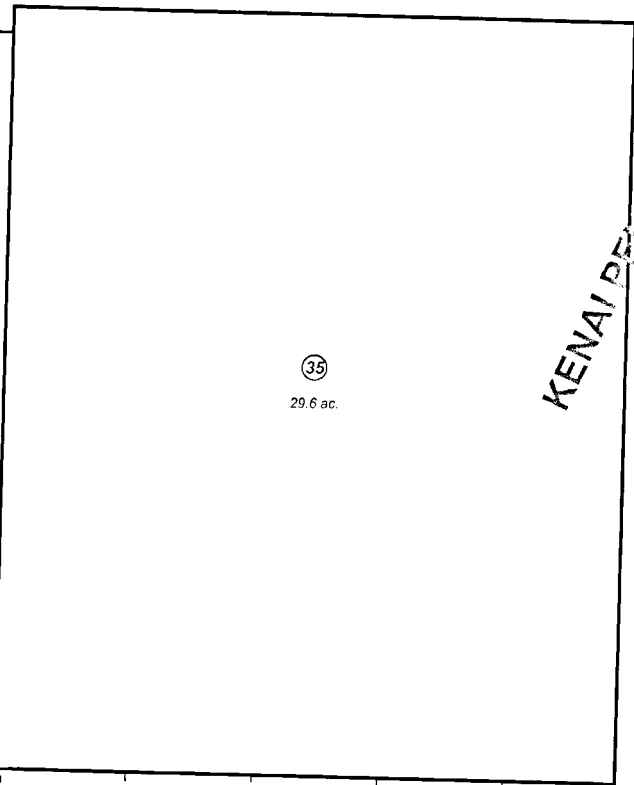
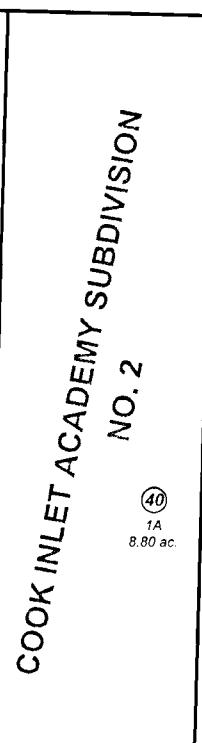
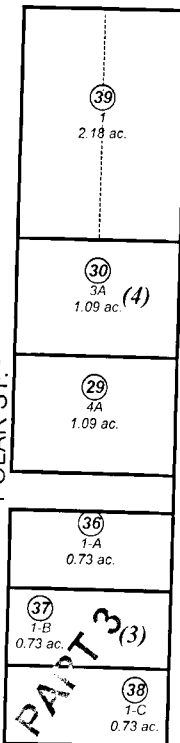
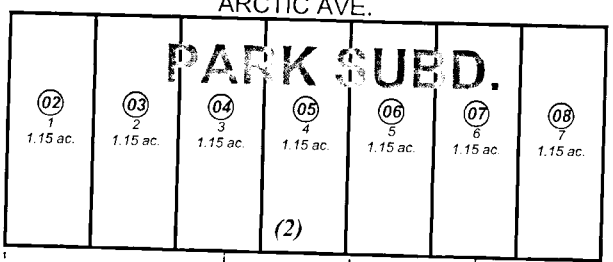
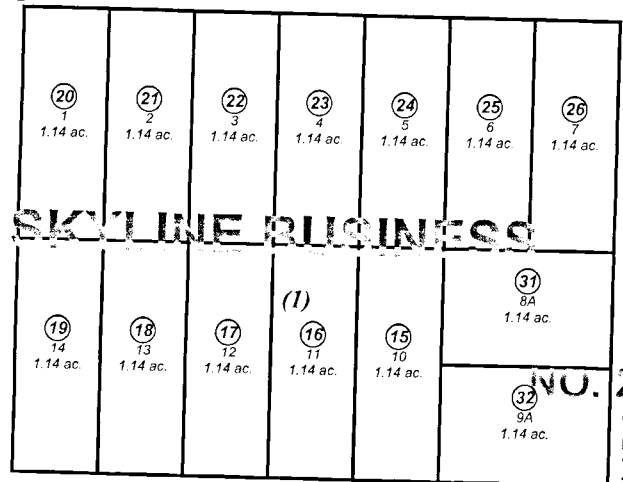
BK  
060

131-550

T05N  
T04N

SEC. 2  
SEC. 1

LEN



450

SKYLINE DR.

ARCTIC AVE.

POLAR ST.

COOK INLET ACADEMY SUBDIVISION  
NO. 2

KENAI PENINSULA  
FOOD BAR

400

WASHINGTON DR.



JULY 22, 2002

For 2003 assessment roll		
Delete	Add	Revise
33,34	40	

Assessor's Map  
Kenai Peninsula Borough

200

SKYLINE BUSINESS PARK SUB - KN0790018  
 SKYLINE BUSINESS PARK SUB NO 2 - KN0790152  
 COOK INLET ACADEMY SUB - KN0830183  
 SKYLINE BUSINESS PARK SUB PART 3 - KN0840293  
 COOK INLET ACADEMY SUB NO 2 - KN2002020

This map is prepared for Kenai Peninsula Borough Assessing Dept. use only and is not intended for conveyance nor is it a survey.  
 Note- Assessor's block Numbers Shown in Ellipses  
 Assessor's Parcel Numbers Shown in Circles