

NE 1/4 SEC. 2, T05N, R11W, S.M.

**BK**  
**060**

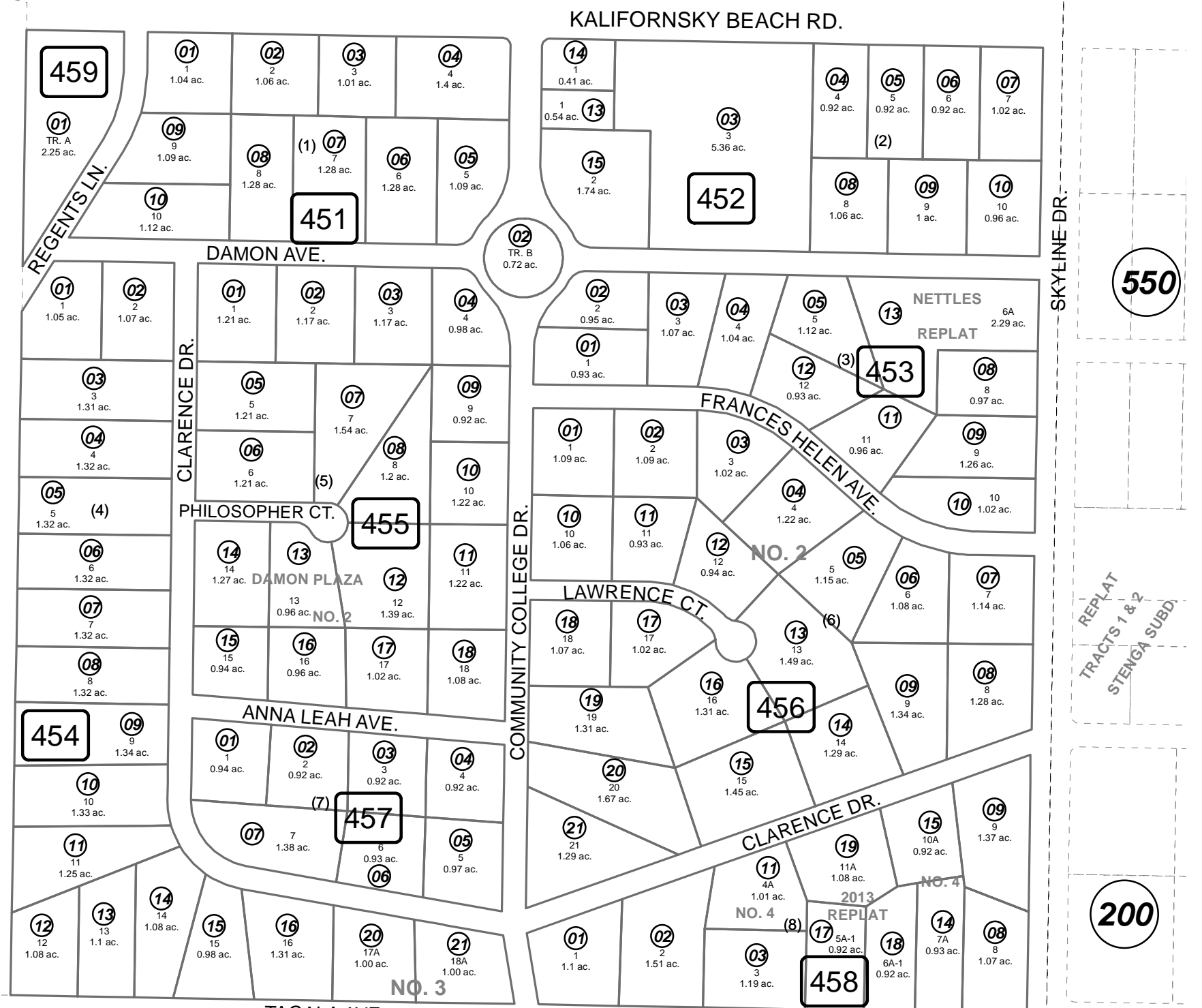
131-450

Note- Assessor's block Numbers Shown in Elipses  
Assessor's Parcel Numbers Shown in Circles

This map is prepared  
for Kenai Peninsula  
Borough Assessing Dept.  
use only and is not  
intended for conveyance  
nor is it a survey.

Assessor's Map  
Kenai Peninsula Borough

- DAMON PLAZA SUB NO 2 KN0870062
- DAMON PLAZA SUB NO 3 KN2002096
- DAMON PLAZA SUB NO 3 KN2003031
- DAMON PLAZA 2013 REPLAT KN2013008
- DAMON PLAZA SUB NETTLES REPLAT KN2014008



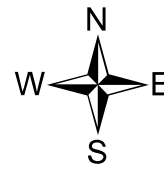
**220**

**550**

**200**

**210**

**410**



0 100 200 400 Feet

APRIL 8, 2014

For 2015 assessment roll		
Delete	Add	Revise
	To	
45306	45313	
45307		