

SE1/4 SW1/4 & SW1/4 SE1/4 SEC. 33, T04N, R11W, S.M.

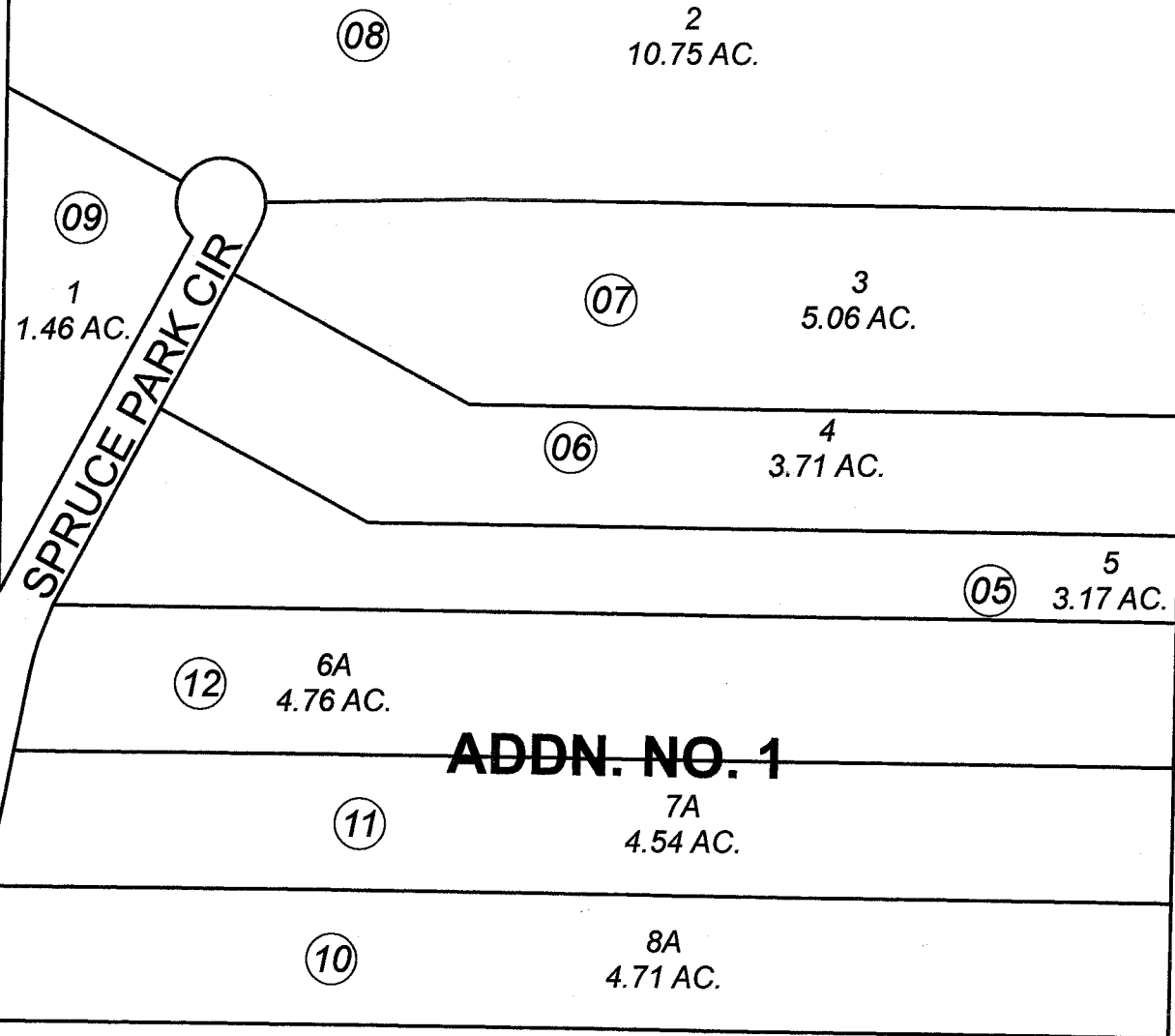
131-570

SHAI

ADURA ADDN.

LAKEVIEW ESTATES SUBDIVISION

160



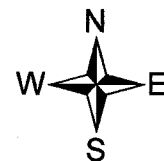
160

SHORELINE AVE.

390

JUNE 24, 2008

For 2009 assessment roll		
Delete	Add	Revise
	To	
1		



Assessor's Map
Kenai Peninsula Borough

LAKEVIEW ESTATES SUB KN0790041
LAKEVIEW ESTATES SUB ADDN NO 1 KN2004086

This map is prepared for Kenai Peninsula Borough Assessing Dept. use only and is not intended for conveyance nor is it a survey.

Note- Assessor's block Numbers Shown in Ellipses
Assessor's Parcel Numbers Shown in Circles