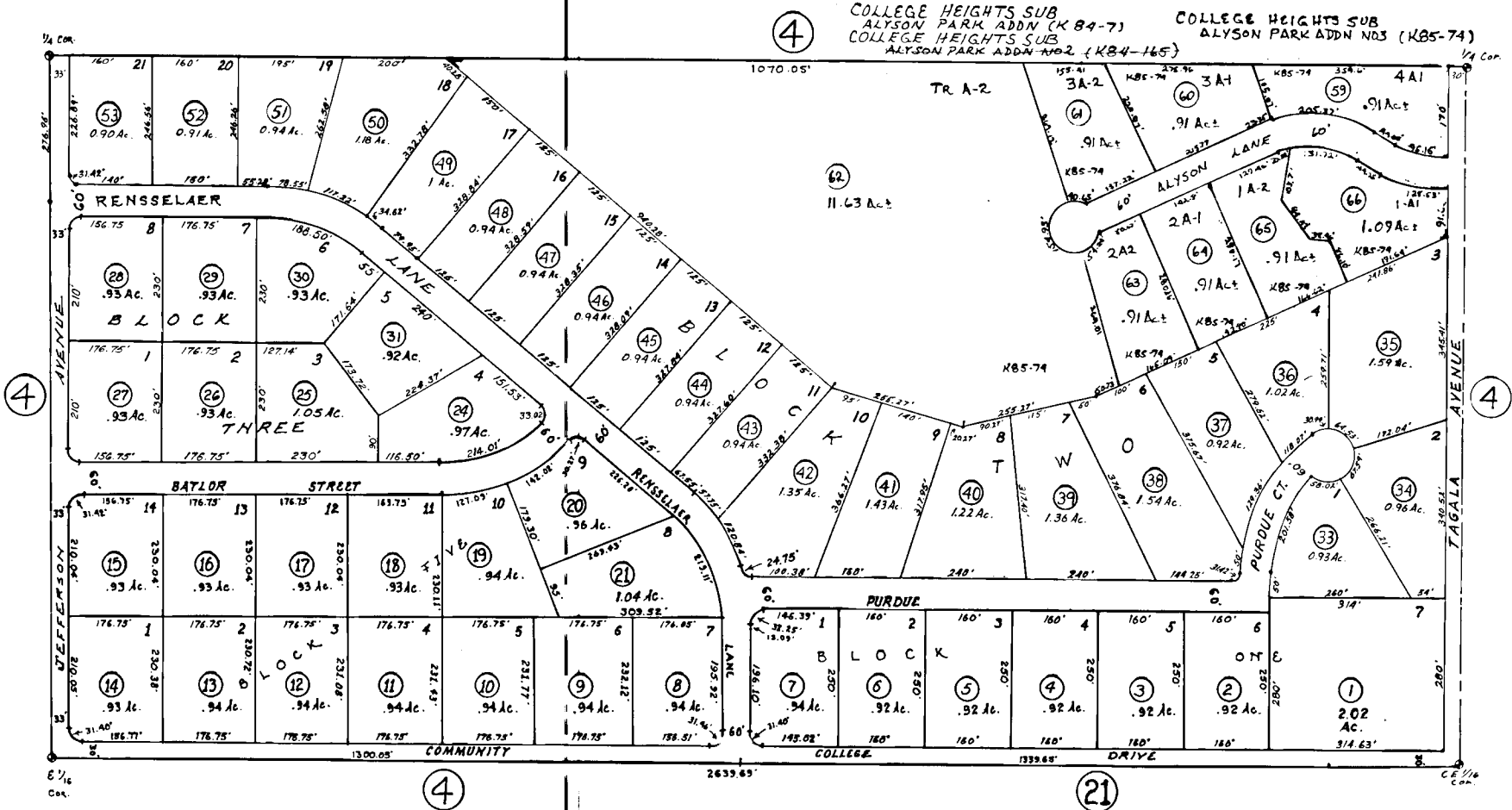


N 1/2 SE 1/4 SEC. 2, T4N, R11W, S.M.

131-41



# College Heights Subdivision

Assessor's Map <sup>BLK 3</sup> 165 K-76-103  
 Kenai Peninsula Borough, Alaska  
 BLK. 3 # 77-77  
 BLK. 2 # 74-76

NOTE - Assessor's Block Numbers Shown in Ellipses  
 Assessor's Parcel Numbers Shown in Circles