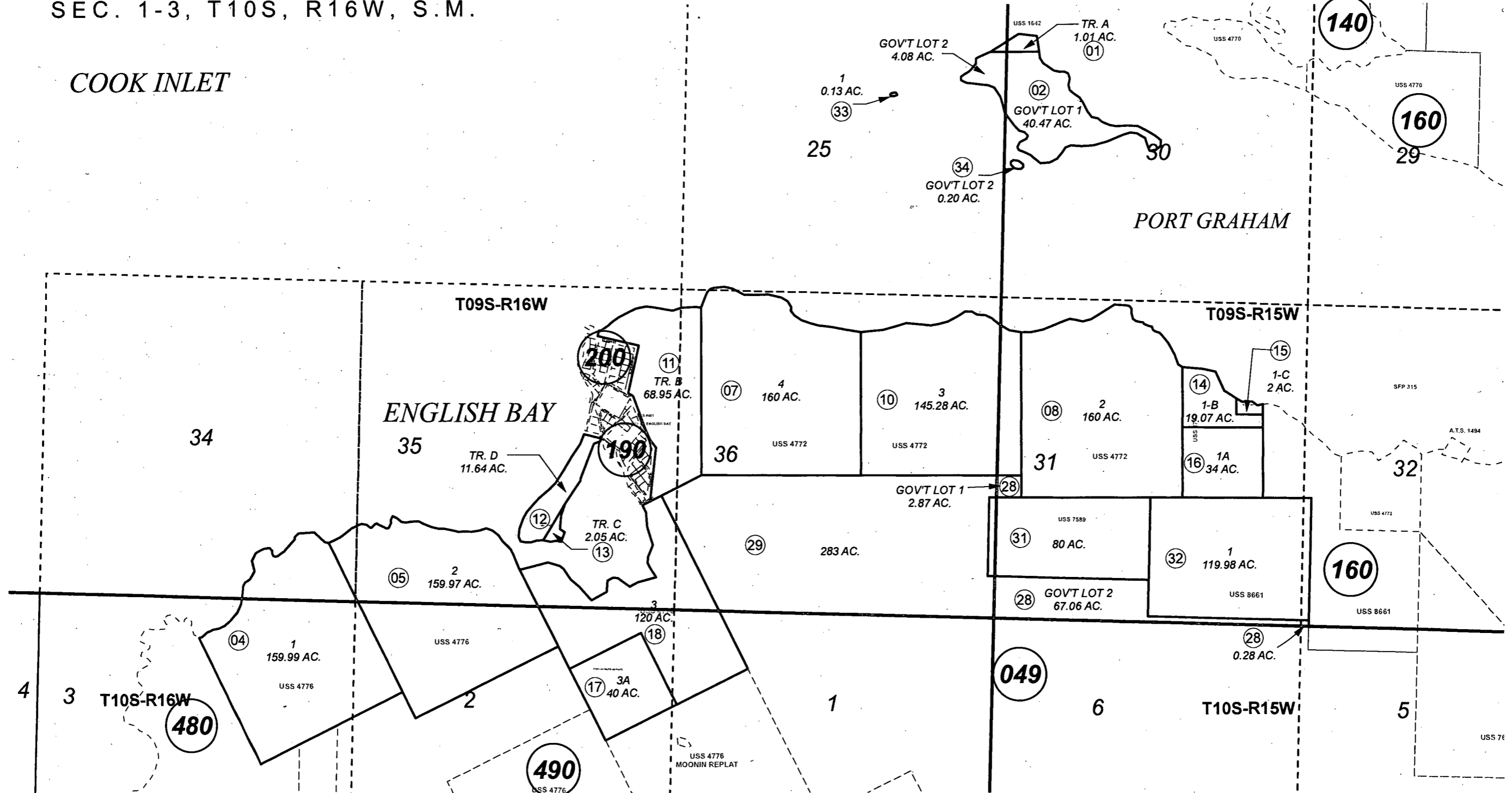


POR. SEC. 30-32, T09S, R15W & SEC. 25, 34-36, T09S, R16W &
 SEC. 1-3, T10S, R16W, S.M.

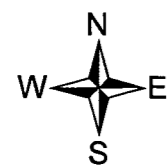
191-150

COOK INLET



OCTOBER 3, 2012

For 2013 assessment roll		
Delete	Add	Revise
To	34	02,28
(ACREAGE CHANGE)		



Assessor's Map
 Kenai Peninsula Borough

US SURVEY 4772 SL0004772
 US SURVEY 4776 SL0004776
 US SURVEY 4901 SL0004901
 US SURVEY 7589 SL0007589
 US SURVEY 8661 SL0008661
 BLACKBURN SUB SL0760006
 ENGLISH RIVER HEIGHTS SUB SL0840003

This map is prepared for Kenai Peninsula Borough Assessing Dept. use only and is not intended for conveyance nor is it a survey.

Note- Assessor's block Numbers Shown in Ellipses
 Assessor's Parcel Numbers Shown in Circles