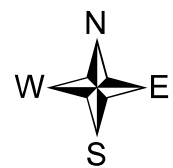
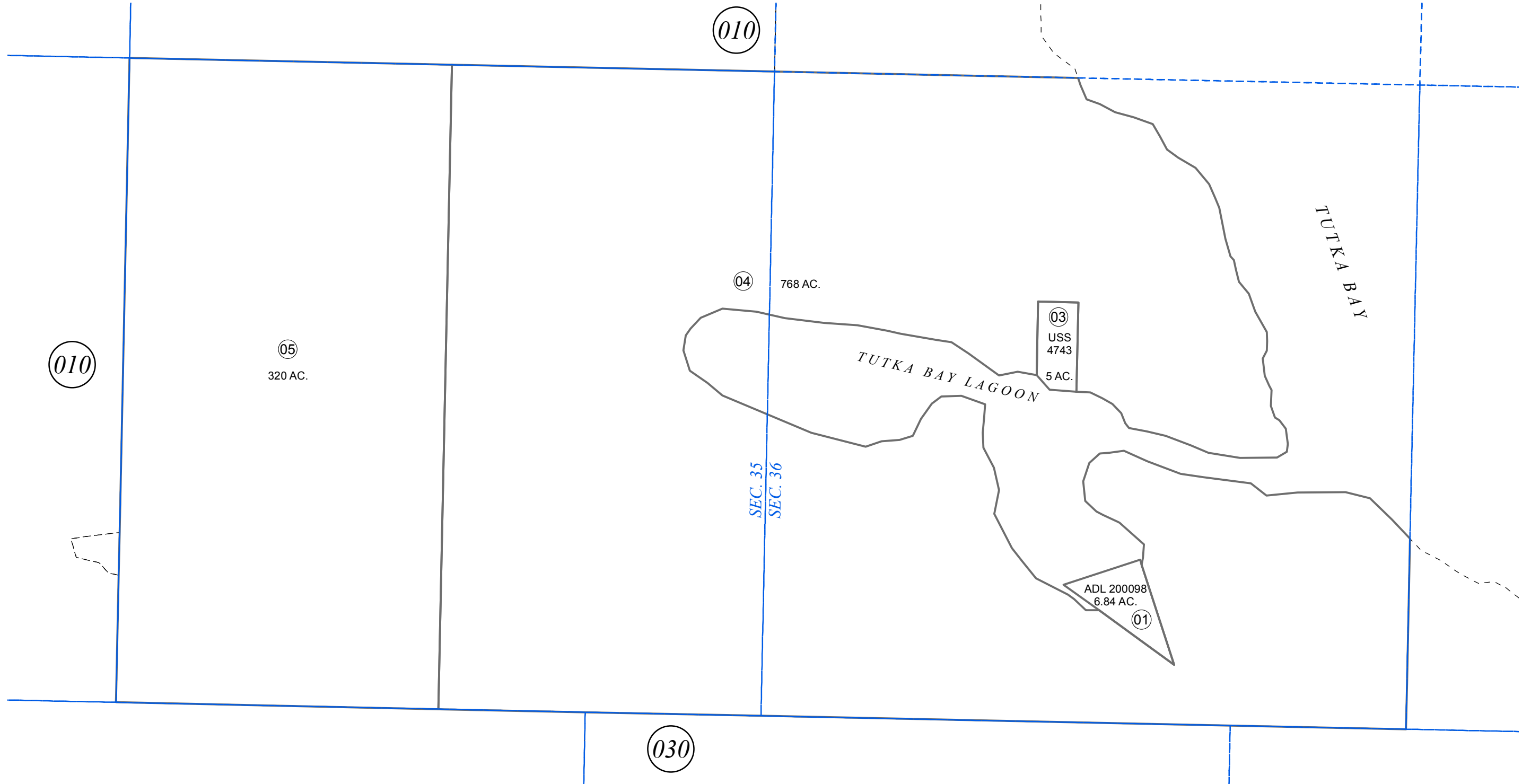


SEC. 35 & 36, T08S, R13W, S.M.

191-011



0 250 500 1,000 Feet

JULY 8, 2015

For 2016 assessment roll		
Delete	Add	Revise
To		
02	04,05	

Assessor's Map
Kenai Peninsula Borough

US SURVEY 4743 SL0004743

This map is prepared for Kenai Peninsula Borough Assessing Dept. use only and is not intended for conveyance nor is it a survey.

Note- Assessor's block Numbers Shown in Elipses
Assessor's Parcel Numbers Shown in Circles