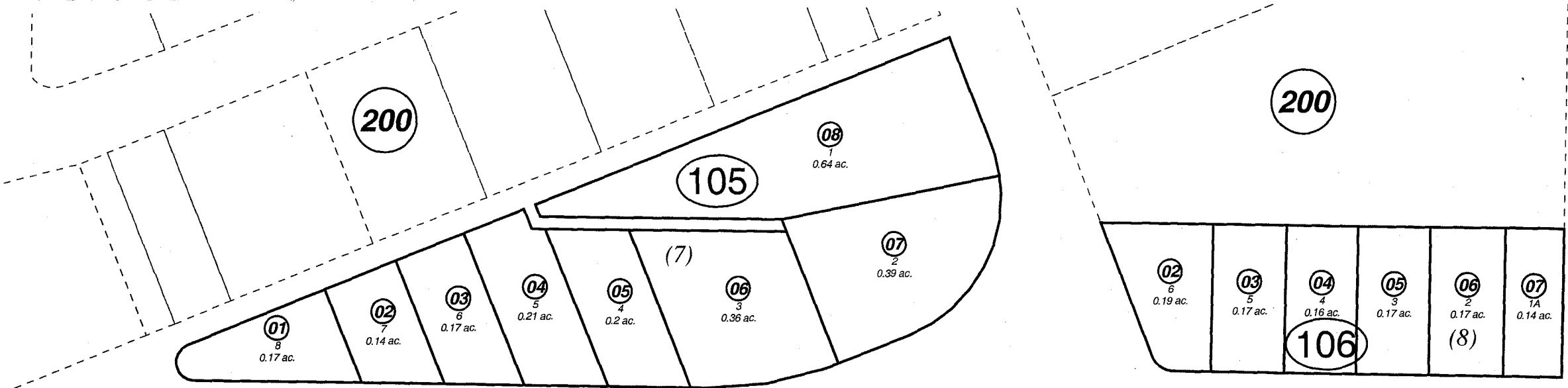
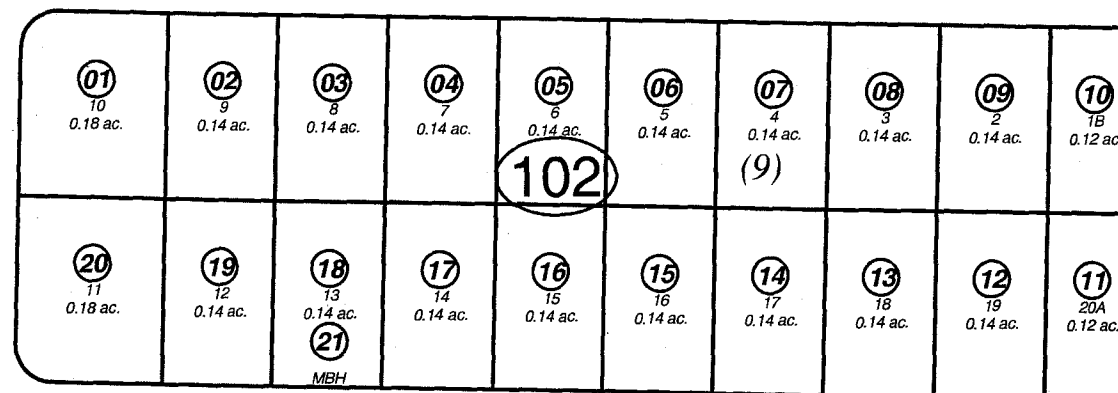
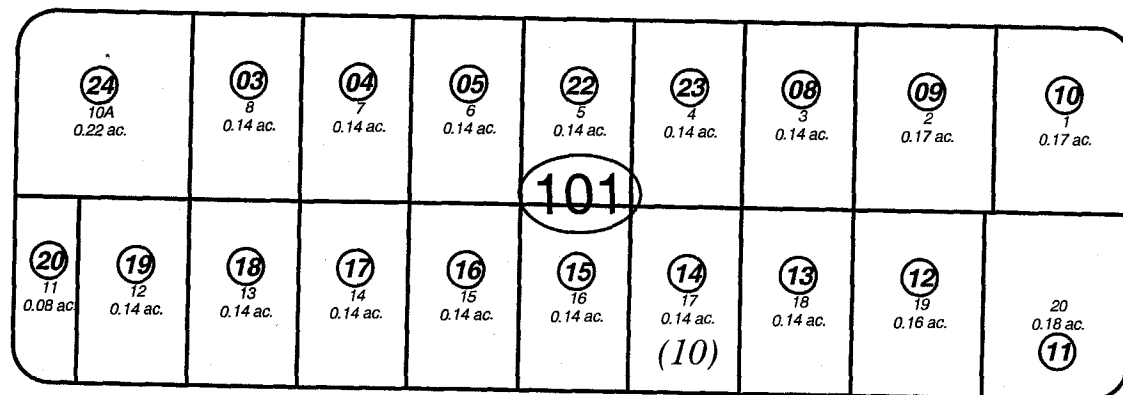


POR. SEC. 20, T06S, R13W, S.M.

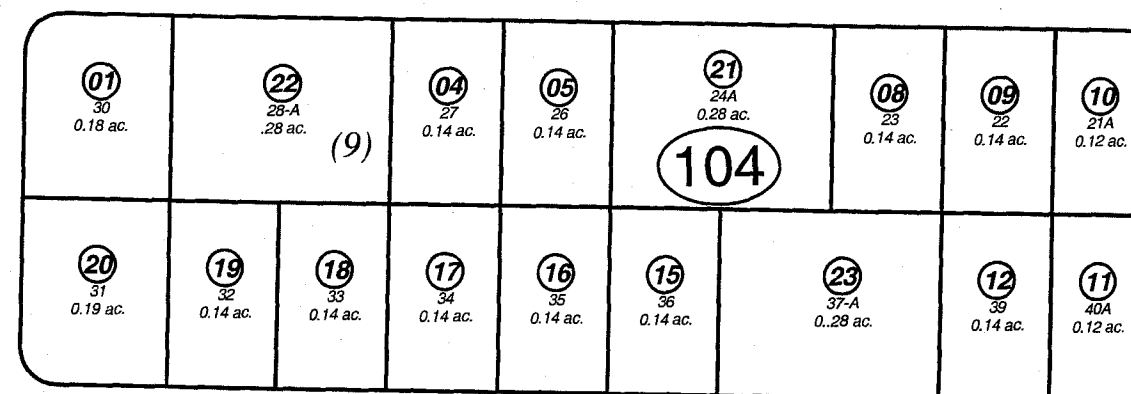
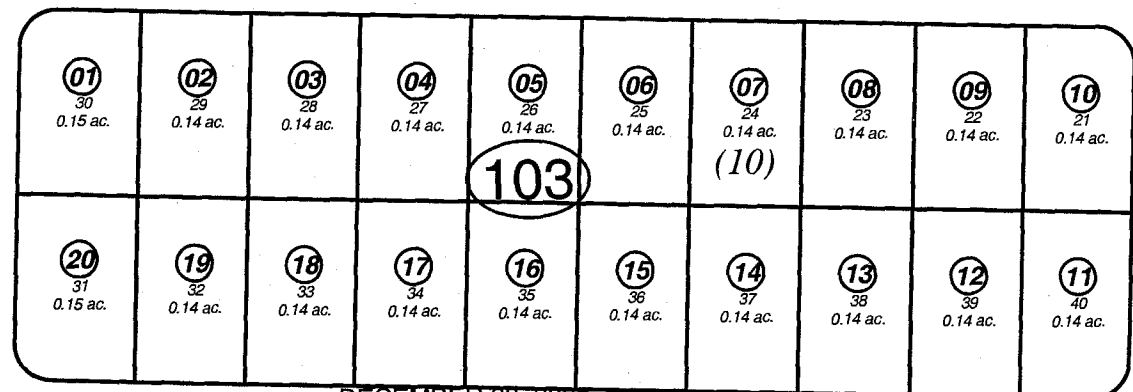
177-100



KLONDIKE AVE.



BONANZA AVE.



GRUBSTAKE AVE.



DECEMBER 23, 2005

For 2006 assessment roll	
Delete	Add
	10124
10101	
10102	

Assessor's Map
Kenai Peninsula Borough

- GLACIER VIEW SUB NO 2 HM0000972
- GLACIER VIEW SUB NO 2 1953 HM0000972
- GLACIER VIEW SUB NO 2 HM0740847
- GLACIER VIEW SUB NO 2 REPLAT HM0740847
- HEATH STREET REPLAT HM0900058
- GLACIER VIEW SUB NO 23 HM0930033
- GLACIER VIEW SUB NO 25 HM2001067
- GLACIER VIEW MUNGER REPLAT HM2002037
- GLACIERVIEW SUB NO 27 HM2005078

This map is prepared for Kenai Peninsula Borough Assessing Dept. use only and is not intended for conveyance nor is it a survey.

Note- Assessor's block Numbers Shown in Elipses
Assessor's Parcel Numbers Shown in Circles