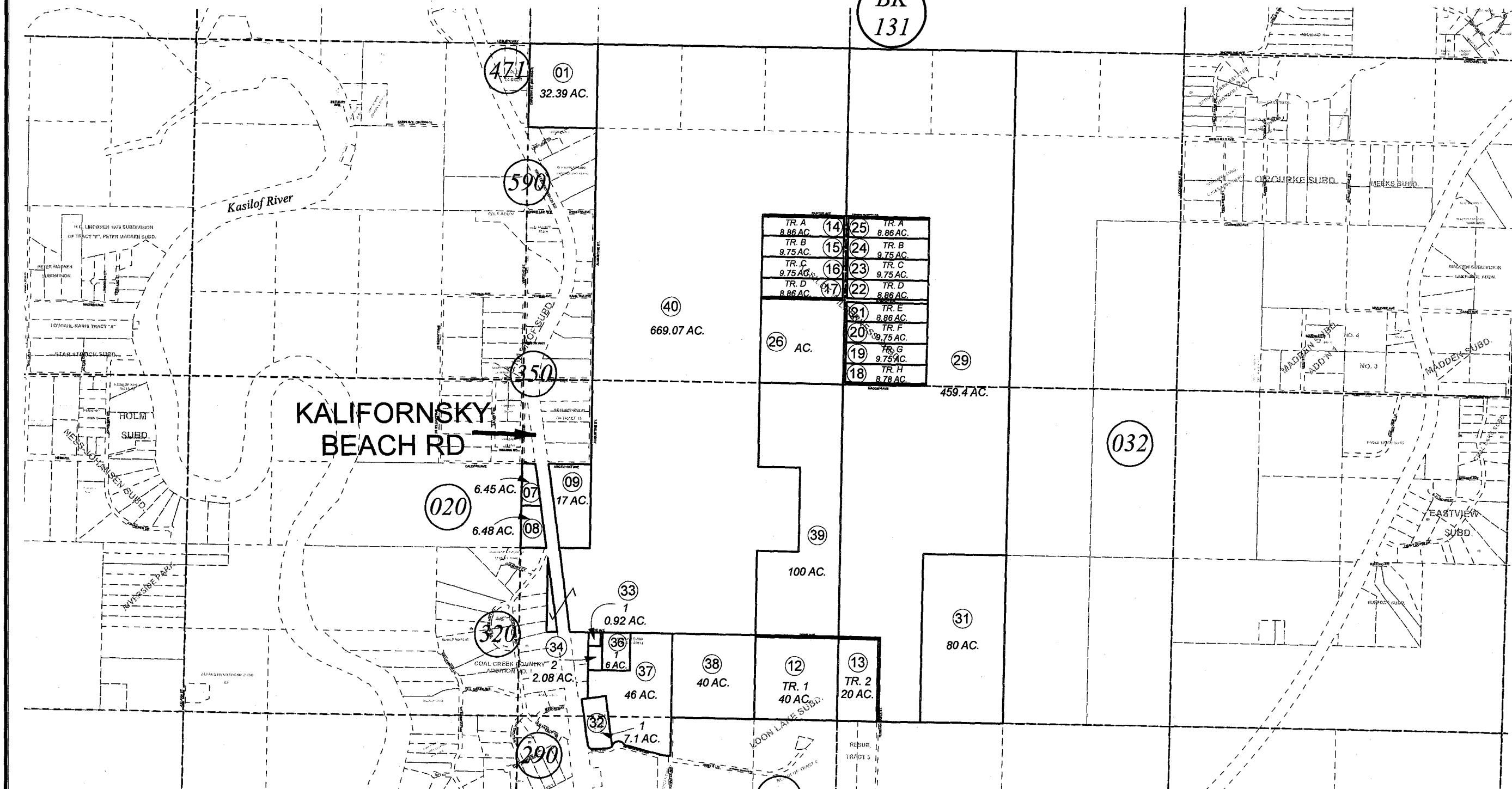


BK
131



| | | | |
|-------------------|------|------|-------------------|
| TR. A 8.86 AC. | (14) | (25) | TR. A 8.86 AC. |
| TR. B 9.75 AC. | (15) | (24) | TR. B 9.75 AC. |
| TR. C 9.75 AC. | (16) | (23) | TR. C 9.75 AC. |
| TR. D 8.86 AC. | (17) | (22) | TR. D 8.86 AC. |
| | | (21) | TR. E 8.86 AC. |
| | | (20) | TR. F 9.75 AC. |
| | | (19) | TR. G 9.75 AC. |
| | | (18) | TR. H 8.78 AC. |

AUGUST 14, 2008

| For 2009 assessment roll | | |
|--------------------------|-----|--------|
| Delete | Add | Revise |
| | To | |



Assessor's Map
Kenai Peninsula Borough

LOON LAKE SUB KN0001686
 KASILOF WILDERNESS SUB KN0750104
 DUNCAN SUB ADDN NO 1 KN0900035
 DUNCAN SUB ADDN NO 2 KN0910030
 DUNCAN SUB K AND L ADDN KN2002028

This map is prepared for Kenai Peninsula Borough Assessing Dept. use only and is not intended for conveyance nor is it a survey.
 Note- Assessor's block Numbers Shown in Ellipses
 Assessor's Parcel Numbers Shown in Circles