

E1/2 NW1/4 NW1/4 SEC. 27, T04N, R11W, S.M.

131-172

460

BEL

TOTE RD.

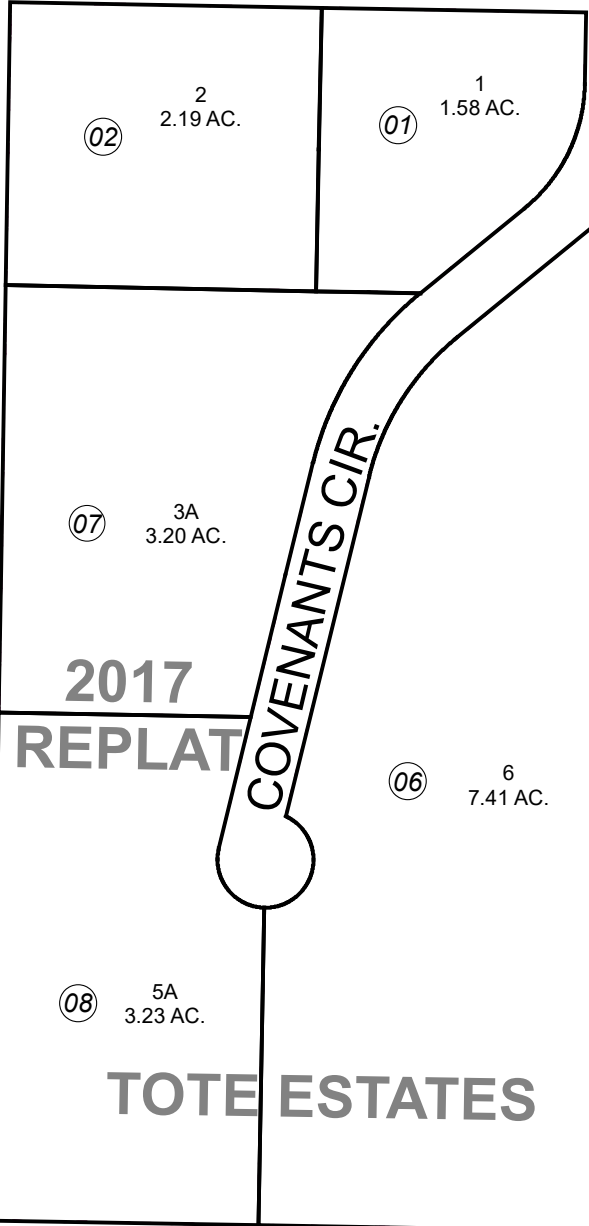
RTY  
T ONE

TY  
TWO

KOWAKAN ST

170

170



2017  
REPLAT

TOTE ESTATES

170

I MANOR NO. 2

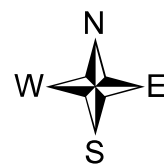
SEPTEMBER 17, 2018

For 2019 assessment roll

| Delete | Add   | Revise |
|--------|-------|--------|
|        |       |        |
| To     |       |        |
| 03-05  | 07,08 |        |

Assessor's Map  
Kenai Peninsula Borough

TOTE ESTATES SUB KN2005009  
TOTE ESTATES SUB 2017 REPLAT KN2018045



0 50 100 200 Feet



This map is prepared for Kenai Peninsula Borough Assessing Dept. use only and is not intended for conveyance nor is it a survey.

Note- Assessor's block Numbers Shown in Ellipses  
Assessor's Parcel Numbers Shown in Circles