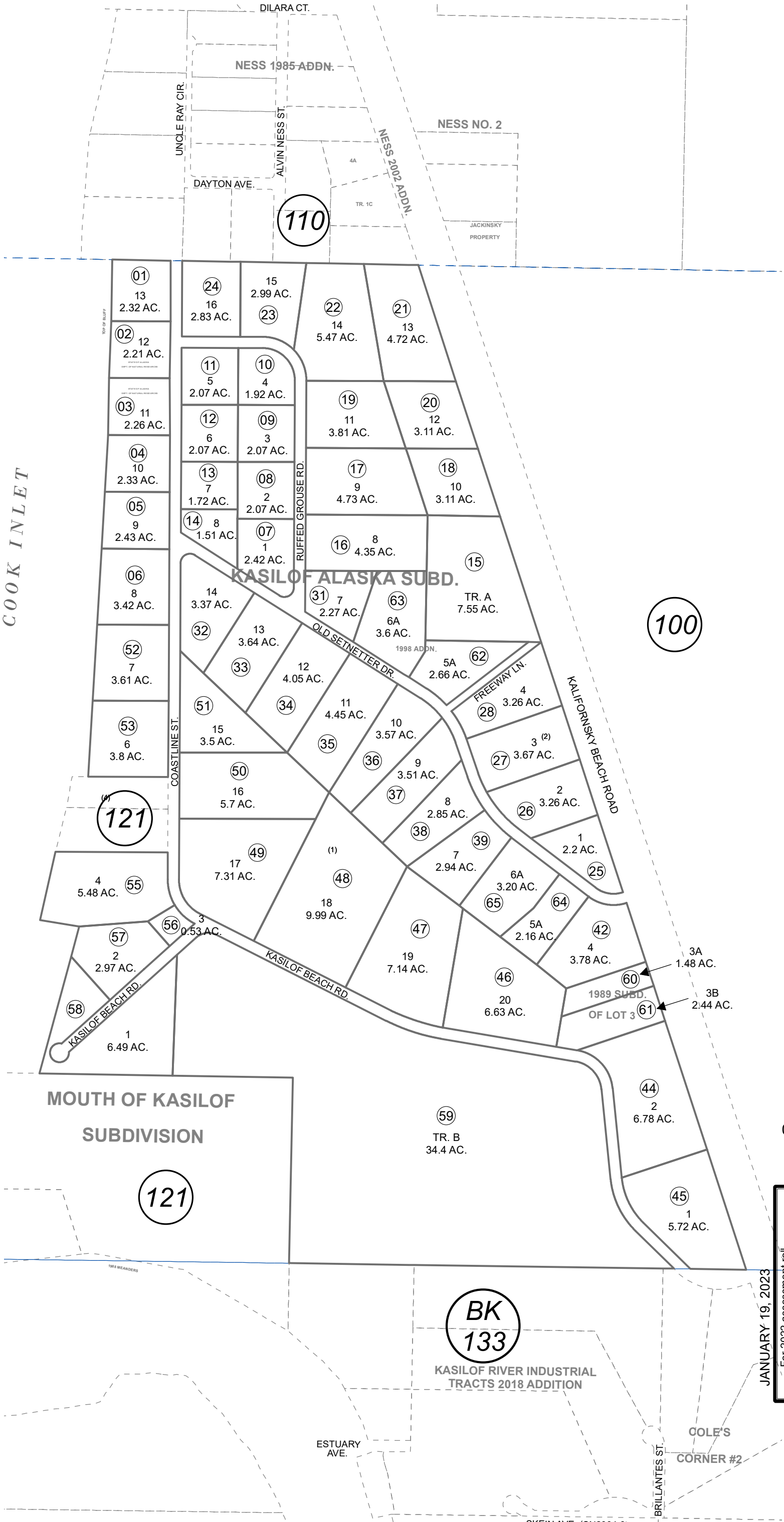


131-120

POR. SEC. 36, T04N, R12W, S.M.

COOK INLET



This map is prepared for Kenai Peninsula Borough Assessing Dept. use only and is not intended for conveyance nor is it a survey.

Note- Assessor's block Numbers Shown in Ellipses Assessor's Parcel Numbers Shown in Circles

KASIOLOF ALASKA SUB AMENDED KN0830166
 KASIOLOF ALASKA SUB 1989 SUB OF LOT 3 KN0890034
 KASIOLOF ALASKA SUB 1998 ADDN KN0980094
 RECORD OF SURVEY KN2021020
 KASIOLOF, ALASKA SUB 2022 REPLAT KN2022087

Assessor's Map
 Kenai Peninsula Borough



0 200 400 Feet

For 2022 assessment roll	
Delete	Add
40,41	64,65
To	
40,41	64,65

JANUARY 19, 2023

BK
133

KASIOLOF RIVER INDUSTRIAL TRACTS 2018 ADDITION

ESTUARY AVE.

COLE'S CORNER #2

SKFIN AVE (SN2004-3)

BRILLANTES ST.