

E1/2 SE1/4 SEC. 2, T04N, R11W, S.M.

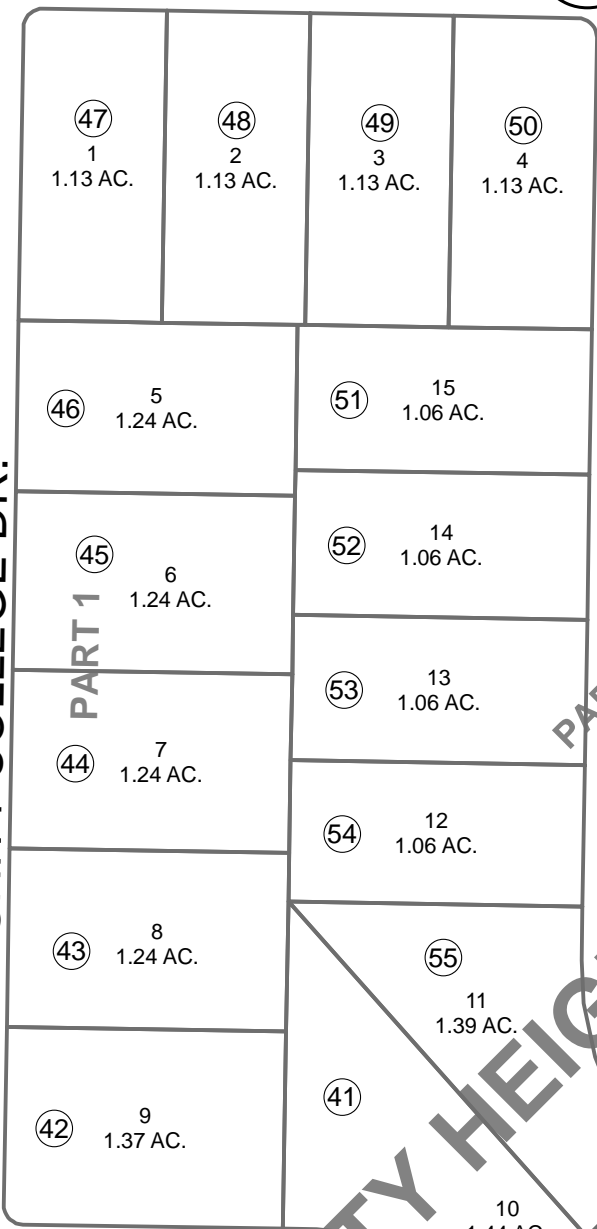
131-210

410

458

TAGALA AVE

COMMUNITY COLLEGE DR.



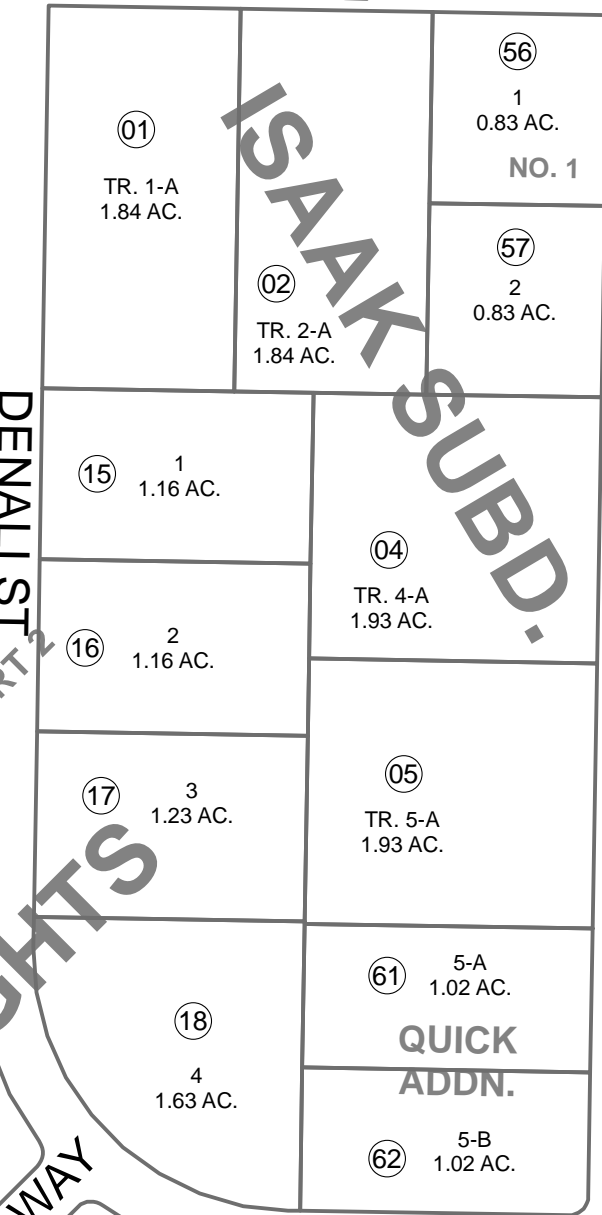
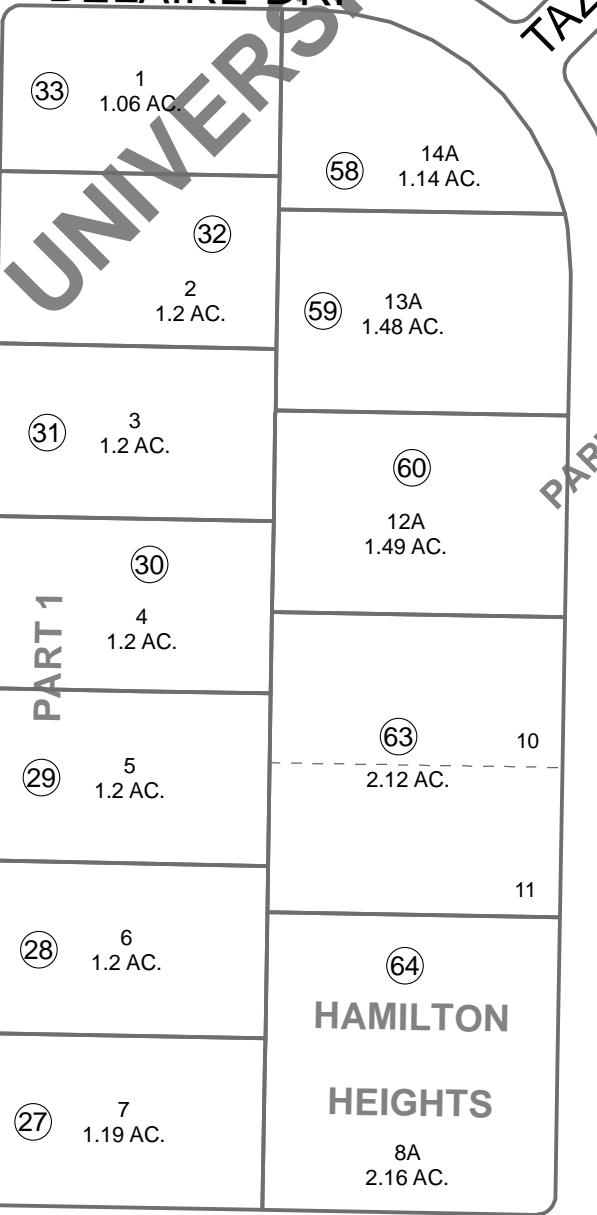
DENALIST ST.

UNIVERSITY HEIGHTS

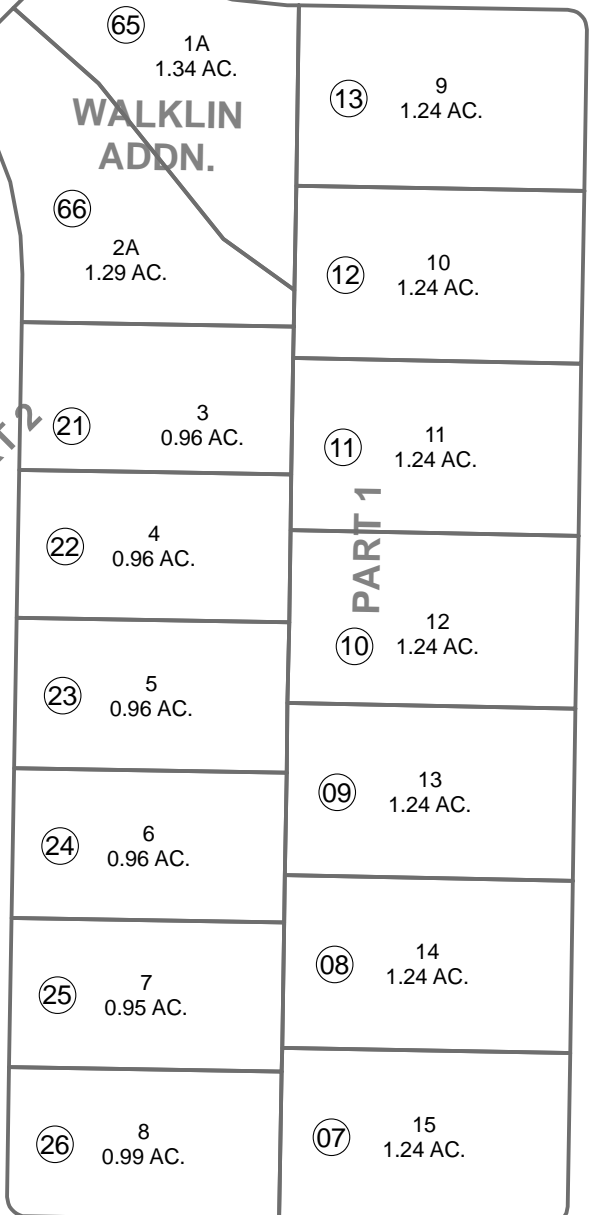
PART 2

TAZA WAY

BELAIRE DR.



ISAAK SUBD.



340

SKYLINE DR.

JEFFERSON AVE.

044

2 1
11 12

MARCH 29, 2013

For 2014 assessment roll	
Delete	Revise
19,20	65,66
To	



1" = 200 feet

Assessor's Map
Kenai Peninsula Borough

ISAAK SUB KN0001530
 UNIVERSITY HEIGHTS SUB PART 1 AMENDED KN0770133
 UNIVERSITY HEIGHTS SUB PART 2 AMENDED KN0770134
 ISAAK SUB NO 1 KN0790160
 UNIVERSITY HEIGHTS SUB PART 2 LOTS 12A KN0830141
 UNIVERSITY HEIGHTS SUB QUICK ADDN KN0850026
 UNIVERSITY HEIGHTS HAMILTON ADDN KN2011050
 UNIVERSITY HEIGHTS WALKLIN ADDN KN2013009

This map is prepared
 for Kenai Peninsula
 Borough Assessing Dept.
 use only and is not
 intended for conveyance
 nor is it a survey.

Note- Assessor's block Numbers Shown in Ellipses
 Assessor's Parcel Numbers Shown in Circles