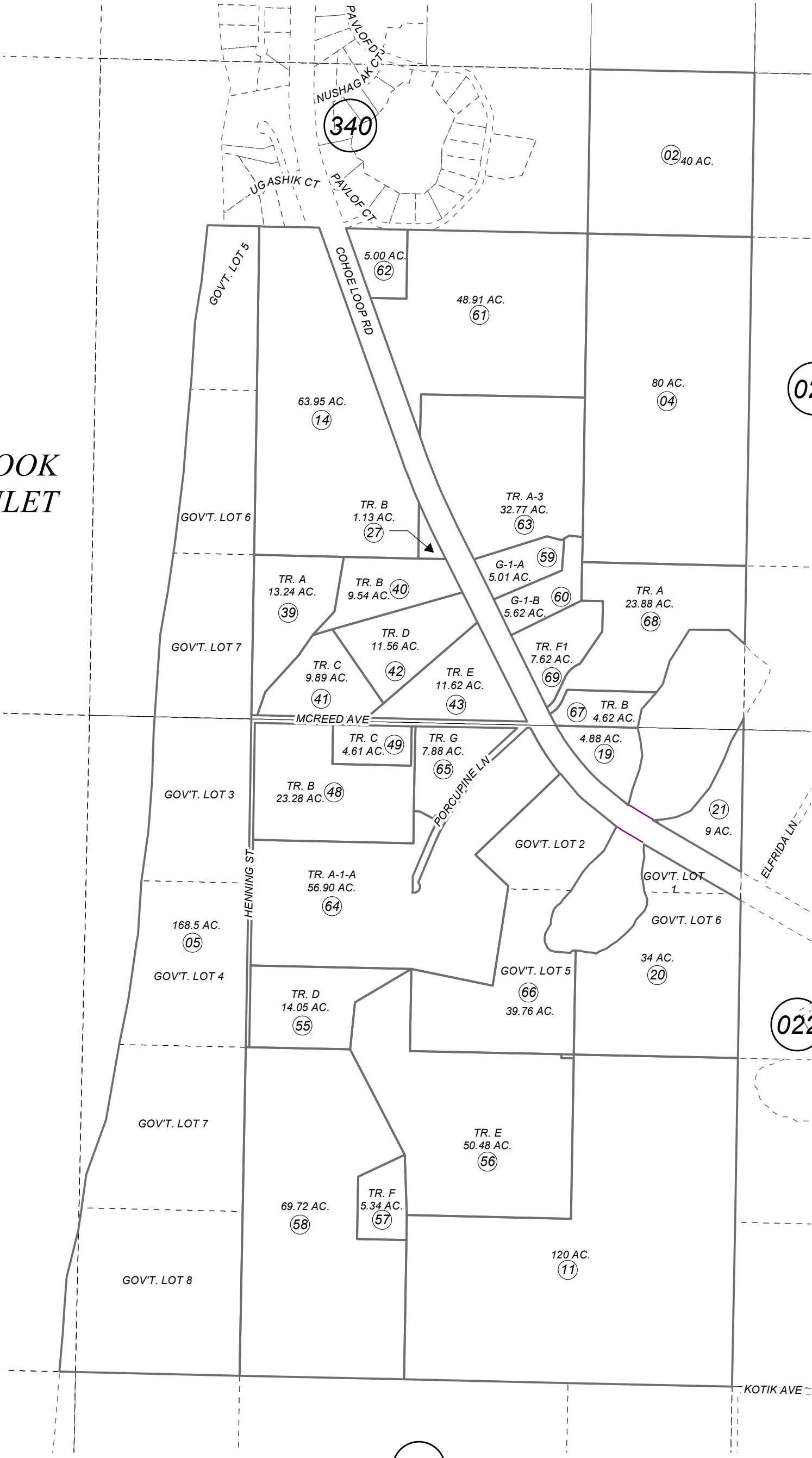


137-010

SEC. 4 & 9, T02N, R12W, S.M.

COOK  
INLET



- WARLE TRACTS KN0810168
- MCREED SUB KN0930012
- PORCUPINE LAKE SUB NO 2 KN0930032
- WARLE TRACTS NO 2 KN0940057
- PORCUPINE LAKE SUB # 3 KN2000066
- PLAT WAIVER RESOLUTION 2003-46 2003-014944-0
- PLAT WAIVER RESOLUTION 2003-48 2004-000546-0
- WARLE TRACTS #3 KN2004094
- PORCUPINE LAKE SUB # 4 KN2005001
- BOTTLENECK LAKE TRACTS KN2006032
- RECORD OF SURVEY KN2021035



0 250 500 1,000 Feet

For 2022 assessment roll	
Delete	Add
To	Revise
	14
(ACREAGE REVISION)	

JULY 30, 2021

This map is prepared for Kenai Peninsula Borough Assessing Dept. use only and is not intended for conveyance nor is it a survey.

Note- Assessor's block Numbers Shown in Ellipses  
Assessor's Parcel Numbers Shown in Circles

Assessor's Map  
Kenai Peninsula Borough