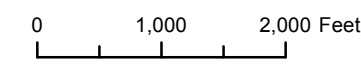
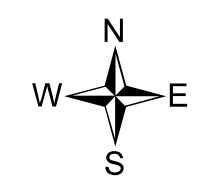
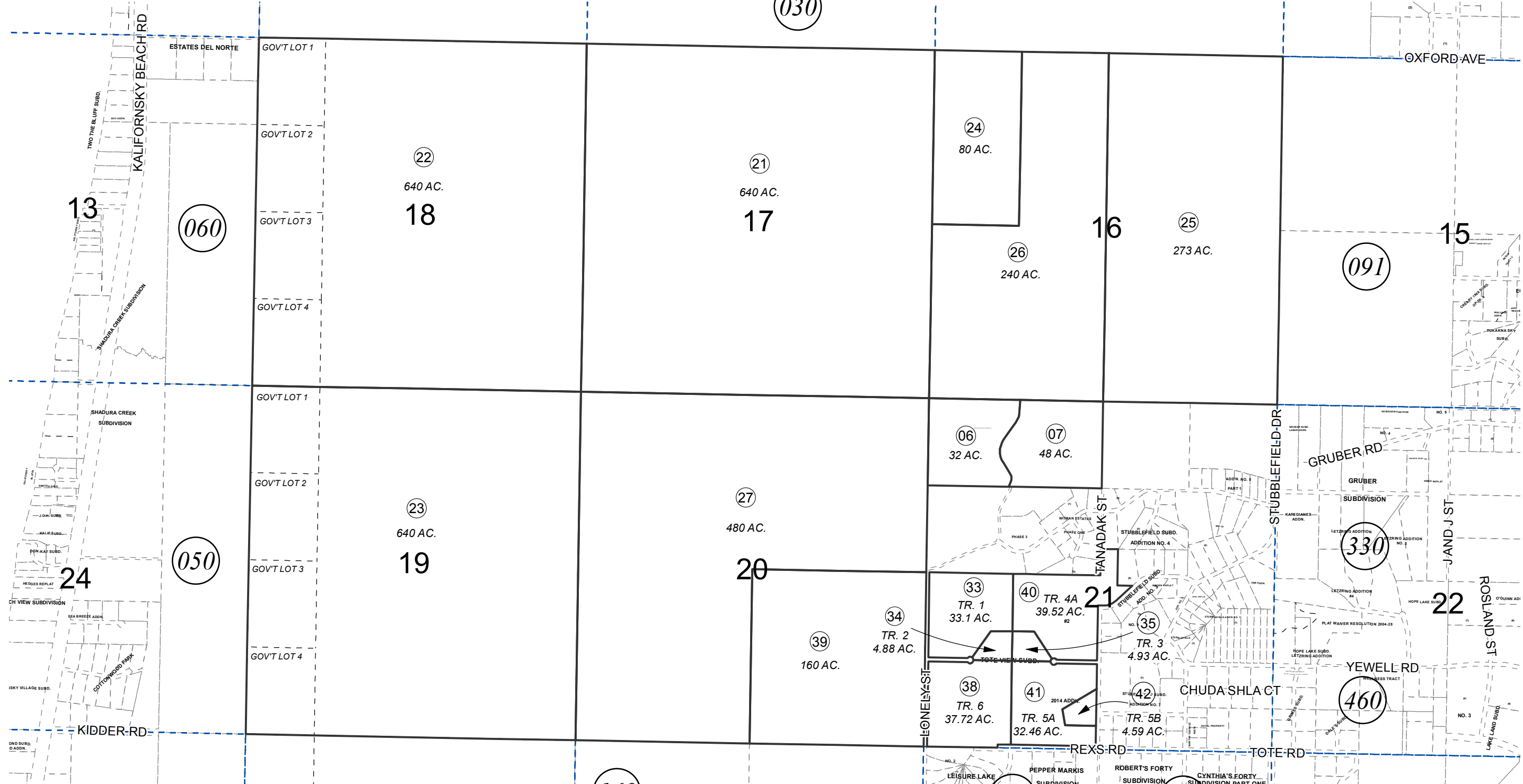


SEC. 16-21, T04N, R11W, S.M.

131-080

030



JULY 24, 2014

For 2015 assessment roll		
Delete	Add	Revise
	To	
37	41,42	

Assessor's Map
Kenai Peninsula Borough

TOTE VIEW SUB KN2001005
TOTE VIEW SUB #2 KN2005026
TOTE VIEW SUB 2014 ADDN KN2014039

This map is prepared for Kenai Peninsula Borough Assessing Dept. use only and is not intended for conveyance nor is it a survey.
Note- Assessor's block Numbers Shown in Ellipses
Assessor's Parcel Numbers Shown in Circles