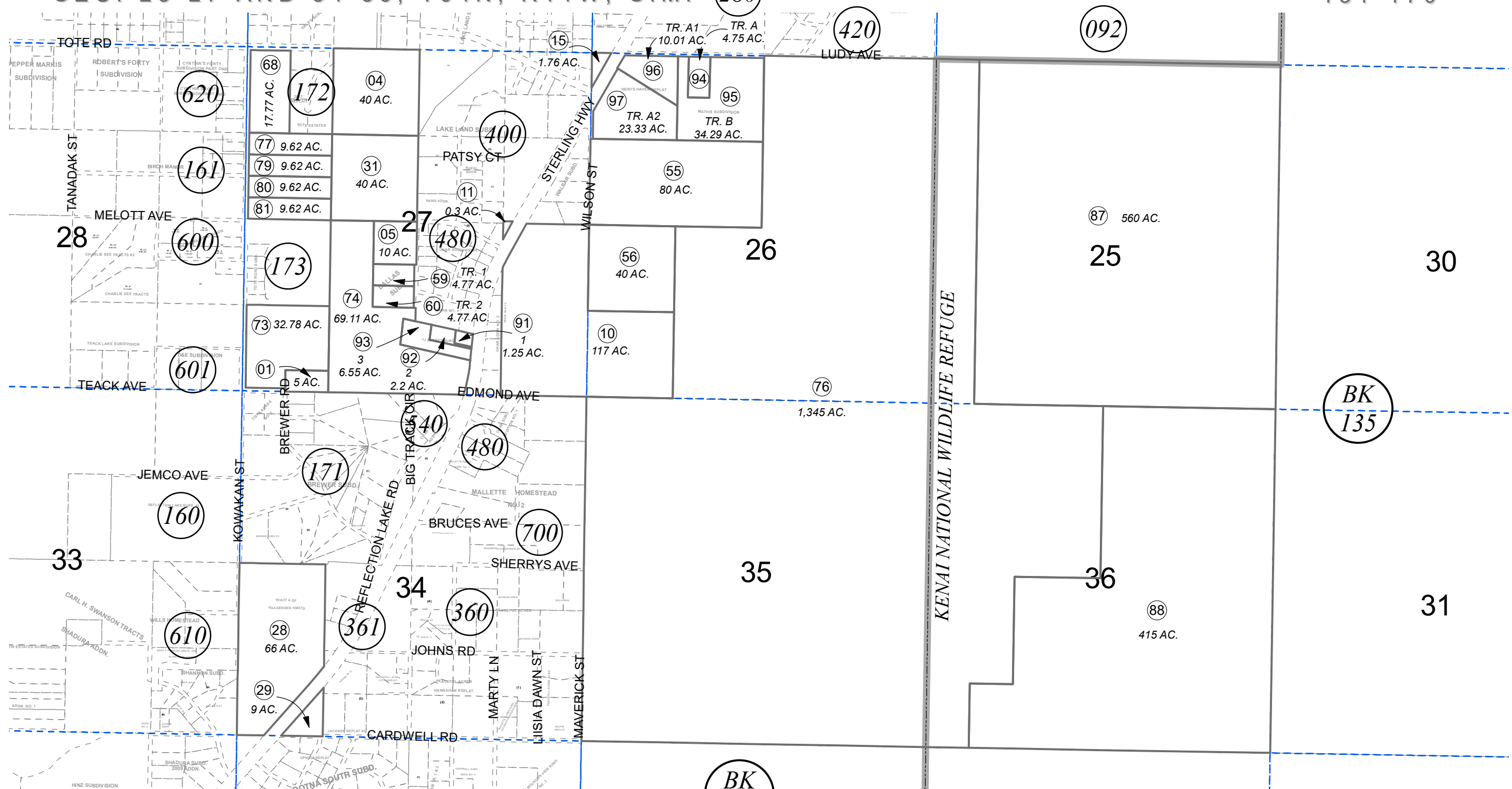


SEC. 25-27 AND 34-36, T04N, R11W, S.M. (280)

131-170



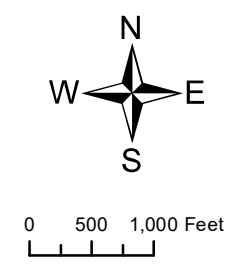
JANUARY 26, 2022

For 2022 assessment roll		
Delete	Add	Revise
	To	68
(REVISED ACREAGE)		

Assessor's Map
Kenai Peninsula Borough

BK
133

DALLAS SUB KN0750070
HEIDIS HAVEN SUB KN2012056
TJ SEGGYS SUBD KN2013123
MATHIS SUB KN2016005
HEIDIS HAVEN REPLAT KN2017036
RECORD OF SURVEY KN2021071



This map is prepared for Kenai Peninsula Borough Assessing Dept. use only and is not intended for conveyance nor is it a survey.
Note- Assessor's block Numbers Shown in Ellipses
Assessor's Parcel Numbers Shown in Circles