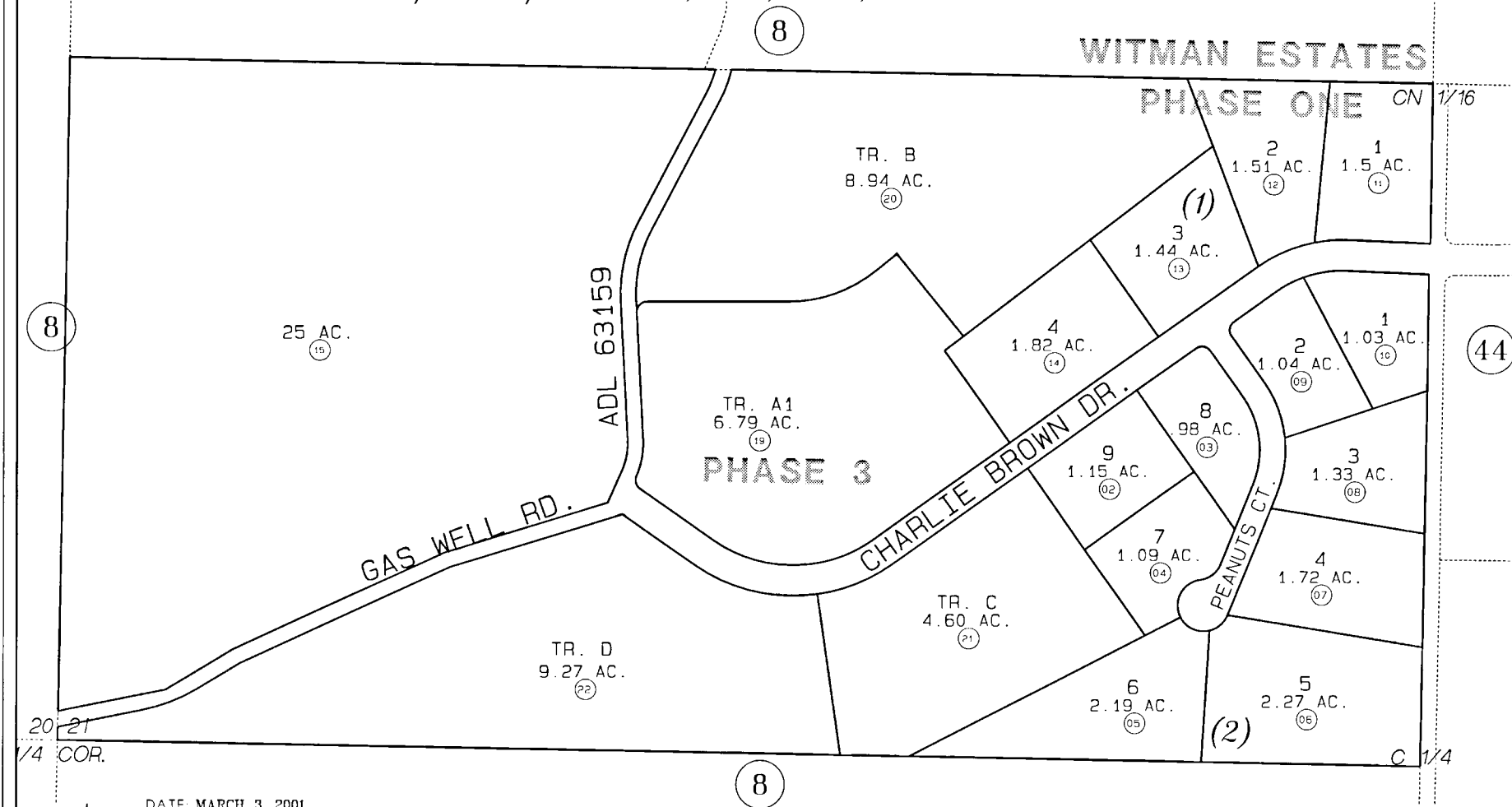


S1/2 NW1/4 SEC. 21, T4N, R11W, SEWARD MERIDIAN

131-441



20-21
1/4 COR.



DATE: MARCH 3, 2001

FOR 2001 ASSESSMENT ROLL		
DELETE	ADD	REVISED
TO		
16-18	19-22	

Assessor's Map
Kenai Peninsula Borough

WITMAN ESTATES PHASE 1 KN880045
WITMAN ESTATES PHASE 3 KN200060

THIS MAP IS PREPARED FOR KENAI PENINSULA BOROUGH ASSESSING DEPT. USE ONLY AND IS NOT INTENDED FOR CONVEYANCE NOR IS IT A SURVEY
NOTE - Assessor's Block Numbers Shown In Ellipses
Assessor's Parcel Numbers Shown In Circles