

Sec. 16
Sec. 21

1/4 COR.

16 15
21 22

8

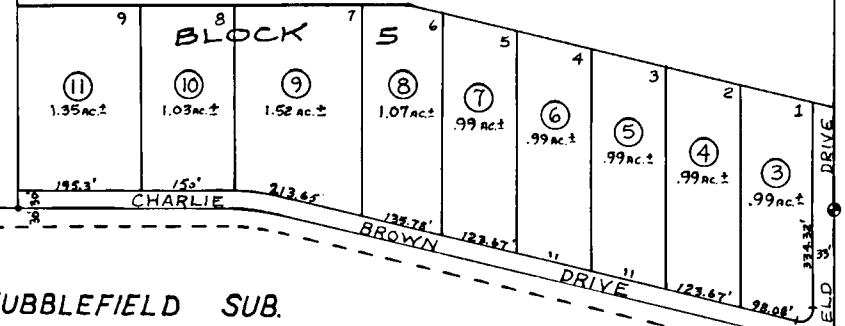
8

1
40.0 ac. ±

2
31.0 ac. ±

1310.31'

9



44

STUBBLEFIELD SUB.
ADDITION NO. 5, PART 1 (K77-130)

Assessor's Map
Kenai Peninsula Borough, Alaska

NOTE - Assessor's Block Numbers Shown in Ellipses
Assessor's Parcel Numbers Shown in Circles