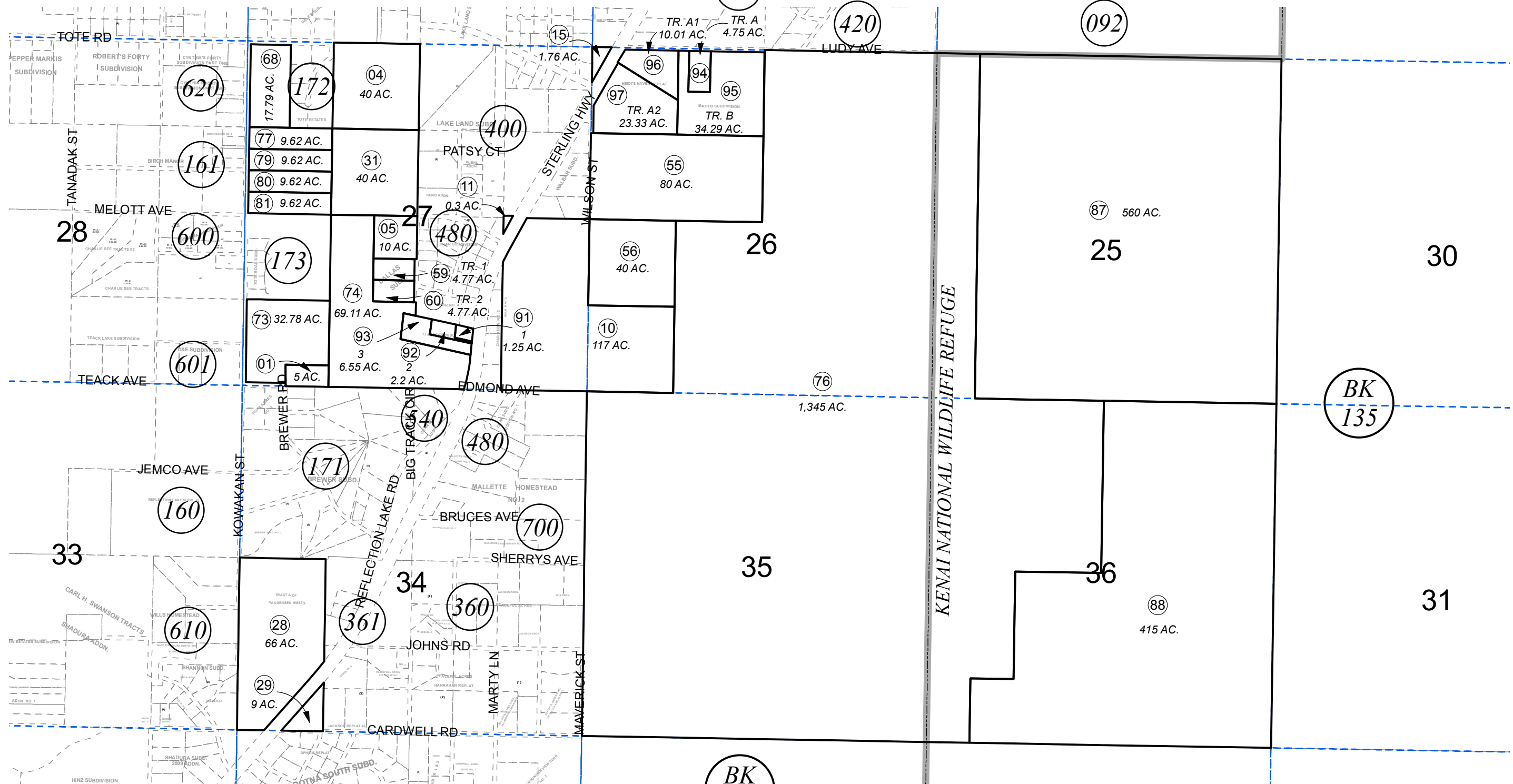


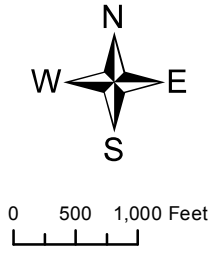
SEC. 25-27 AND 34-36, T04N, R11W, S.M. (280)

131-170



AUGUST 15, 2017

For 2018 assessment roll		
Delete	Add	Revise
To		
89,90	96,97	



Assessor's Map  
Kenai Peninsula Borough

BK  
133

DALLAS SUB KN0750070  
HEIDIS HAVEN SUB KN2012056  
TJ SEGGYS SUBD KN2013123  
MATHIS SUB KN2016005  
HEIDIS HAVEN REPLAT KN2017036

This map is prepared for Kenai Peninsula Borough Assessing Dept. use only and is not intended for conveyance nor is it a survey.  
Note- Assessor's block Numbers Shown in Ellipses  
Assessor's Parcel Numbers Shown in Circles