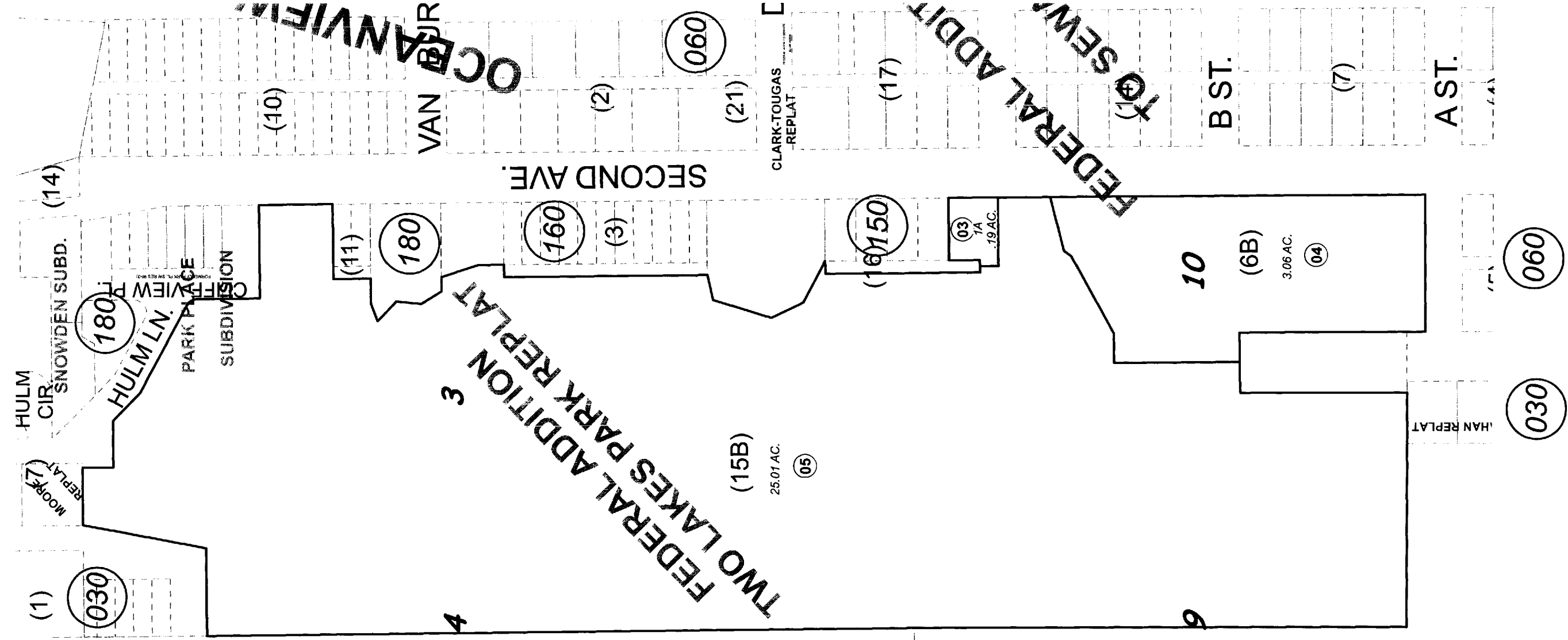


147-010

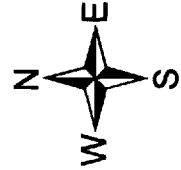
1931

POR. SEC. 3, 4, 9 & 10, T01S, R01W, S.M.



BK 148

Delete	
Add	Revise
For 2011 assessment roll	
JANUARY 20, 2011	
To	01.02 03-05



Assessor's Map
Kenai Peninsula Borough

Assessor's block Numbers Shown in Ellipses
Parcel Numbers Shown in Circles

Note- Assessor's block Numbers Shown in Ellipses
Parcel Numbers Shown in Circles
use only and is not
intended for conveyance
Borough Assessing Dept.
for Kenai Peninsula
This map is prepared
nor is it a survey.

FEDERAL ADDITION TWO LAKES PARK REPLAT SW2010012