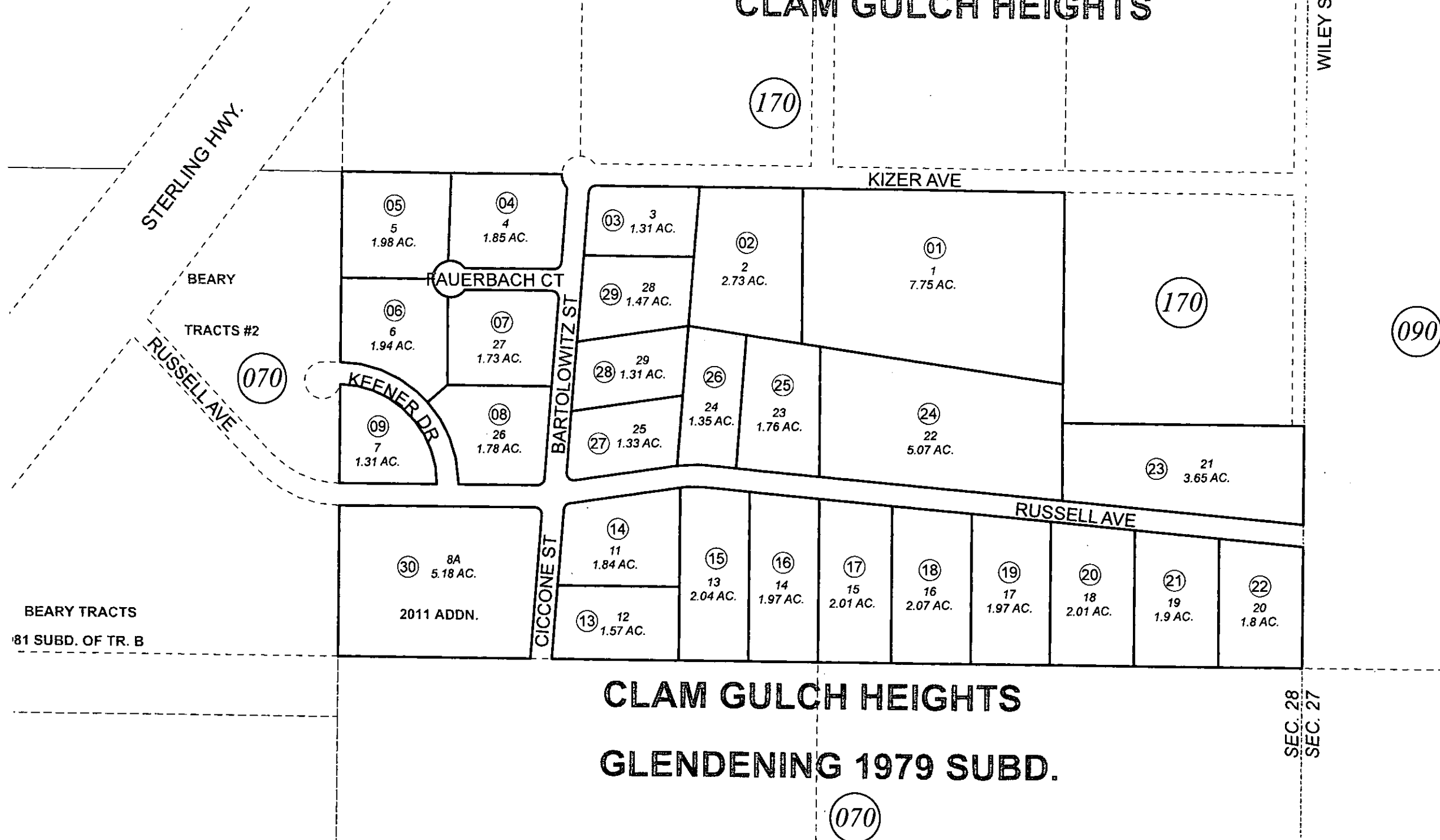


POR. S1/2 NE1/4 SEC. 28, T02N, R12W, S.M.

137-370

CLAM GULCH HEIGHTS



**CLAM GULCH HEIGHTS
GLENDENING 1979 SUBD.**

NOVEMBER 8, 2011

For 2012 assessment roll		
Delete	Add	Revise
To		
10-12	30	



0 75 150 300 Feet

Assessor's Map
Kenai Peninsula Borough

CLAM GULCH HEIGHTS GLENDENING 1979 SUB KN0810135
CLAM GULCH HEIGHTS 2011 ADDN KN2011060

This map is prepared for Kenai Peninsula Borough Assessing Dept. use only and is not intended for conveyance nor is it a survey.
Note- Assessor's block Numbers Shown in Elipses
Assessor's Parcel Numbers Shown in Circles