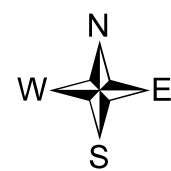
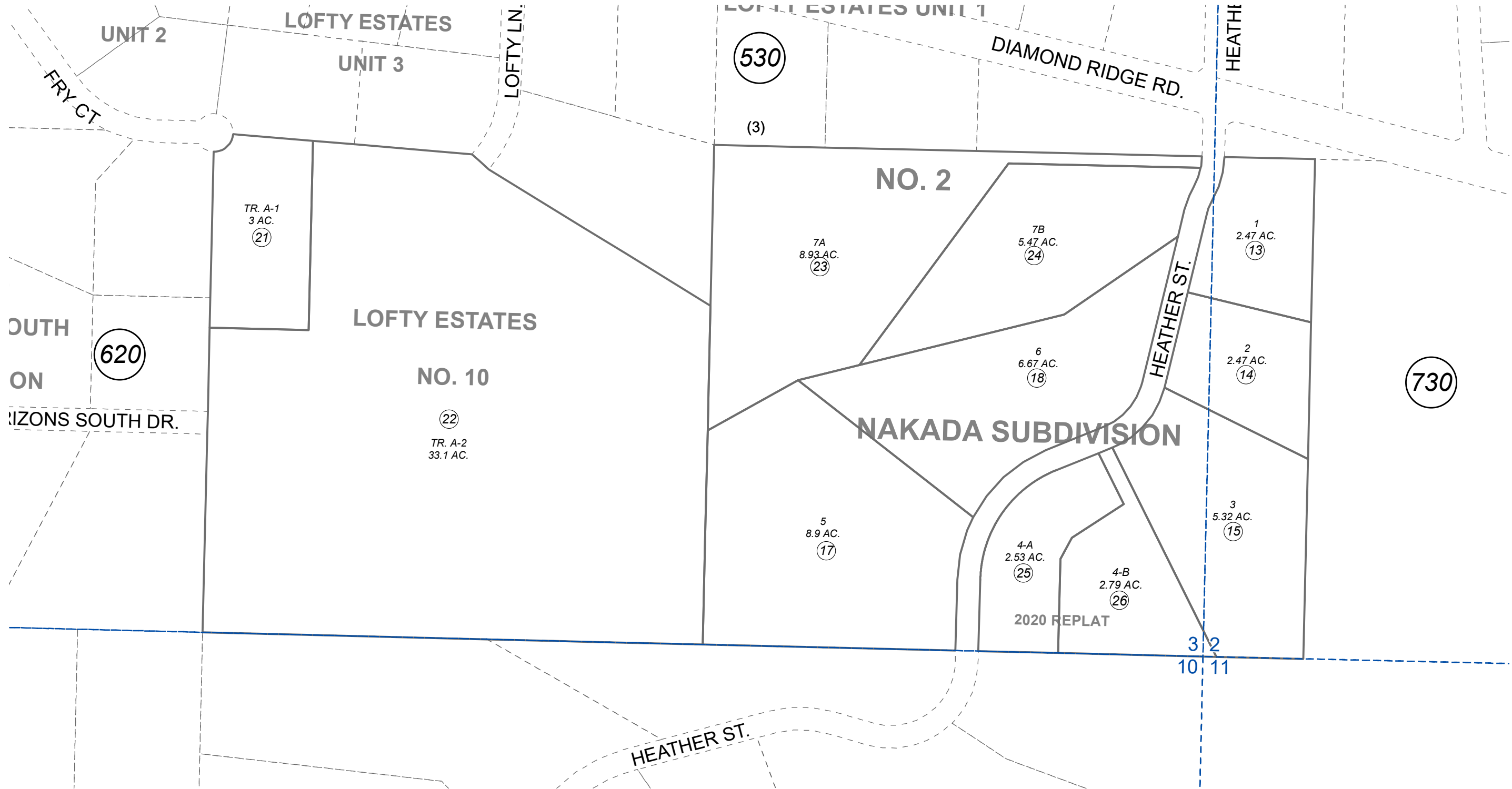


POR. SEC. 3, T06S, R11W, S.M.

173-033



0 200 400 Feet

AUGUST 5, 2020

For 2021 assessment roll		
Delete	Add	Revise
	To	
16	25,26	

Assessor's Map
Kenai Peninsula Borough

NAKADA SUB □ HM0920018
 LOFTY ESTATES NO 10 □ HM2004018
 NAKADA SUB NO 2 □ HM2004050
 NAKADA SUB 2020 REPLAT HM2020020

Note- Assessor's block Numbers Shown in Ellipses
 Assessor's Parcel Numbers Shown in Circles

This map is prepared
 for Kenai Peninsula
 Borough Assessing Dept.
 use only and is not
 intended for conveyance
 nor is it a survey.