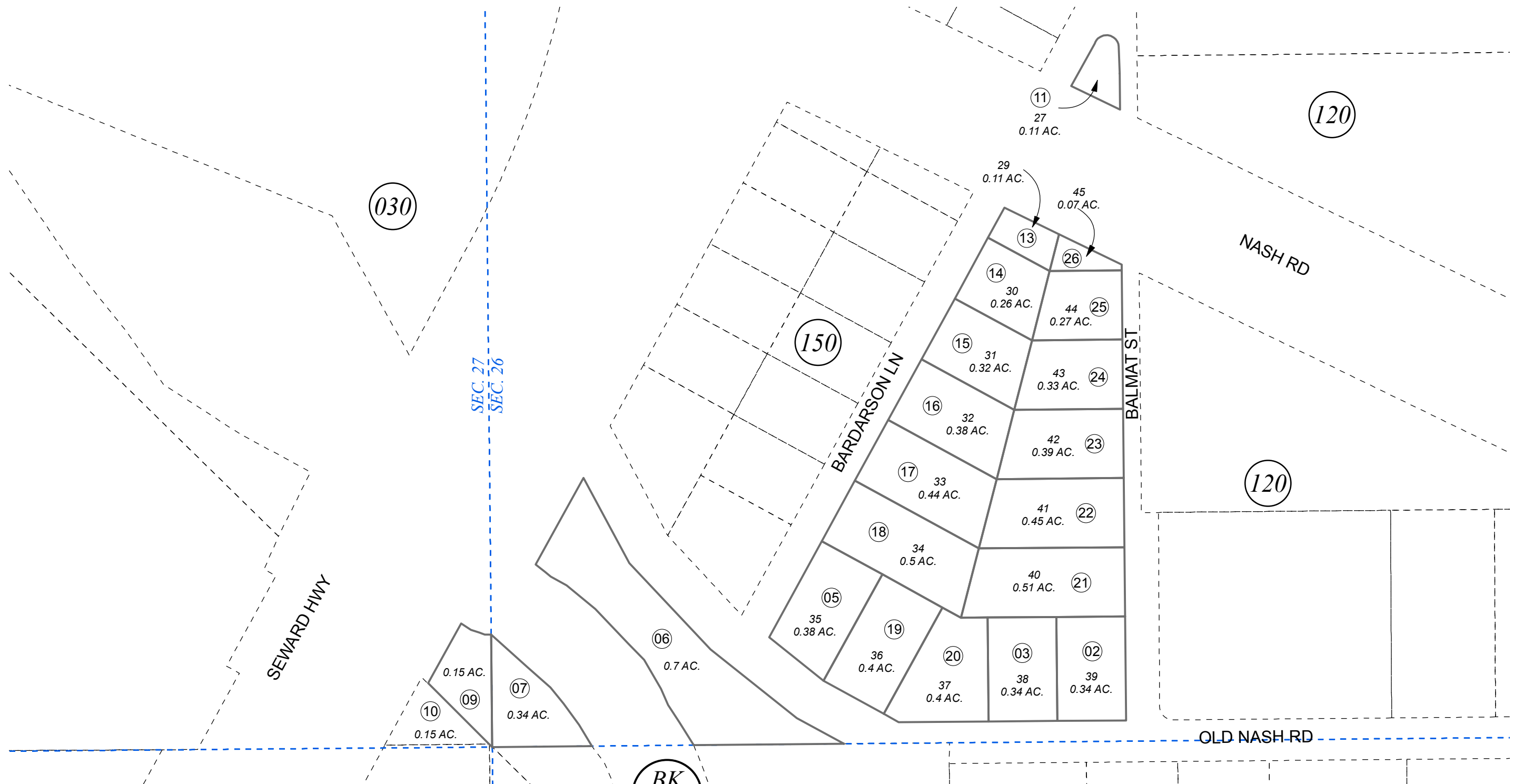


POR. SEC. 26 & 27, T01N, R01W, S.M.

144-140



0 50 100 200 Feet

JANUARY 4, 2017

For 2017 assessment roll		
Delete	Add	Revise
To		11
(ACREAGE CHANGE)		

Assessor's Map  
Kenai Peninsula Borough

BK  
145

BALMAT SUBDIVISION SW0000018  
RECORD OF SURVEY BALMAT SUB SW2014020RS

This map is prepared for Kenai Peninsula Borough Assessing Dept. use only and is not intended for conveyance nor is it a survey.  
Note- Assessor's block Numbers Shown in Ellipses  
Assessor's Parcel Numbers Shown in Circles