

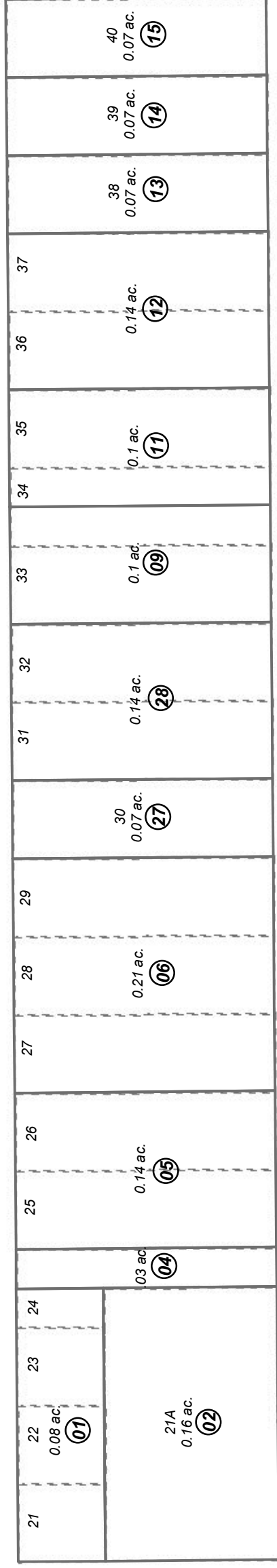
POR. SEC. 10, T01S, R01W, S.M.

149-140



12

FIFTH AVE.



ALLEY

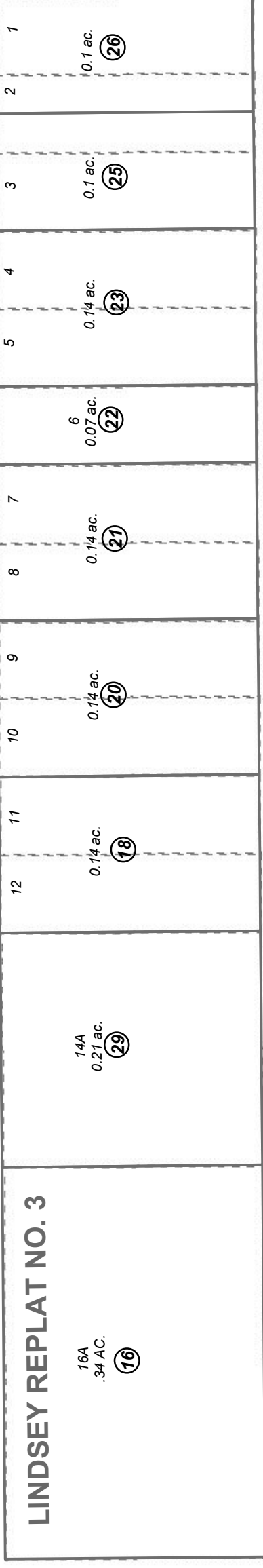
BLOCK 17

BK 148

JEFFERSON ST.

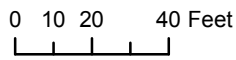
ADAMS ST.

13



SIXTH AVE.

16



DECEMBER 5, 2017

For 2018 assessment roll		
Delete	Add	Revise
	17	29
	To	

ORIGINAL TOWNSITE OF SEWARD SW0000001
 SEWARD ORIGINAL TOWNSITE LINDSEY REPLAT NUMBER 3 SW2001007
 SEWARD ORIGINAL TOWNSITE SWANN REPLAT SW2009003
 SEWARD ORIGINAL TOWNSITE WHITE REPLAT SW2017010

Assessor's Map
 Kenai Peninsula Borough

This map is prepared
 for Kenai Peninsula
 Borough Assessing Dept.
 use only and is not
 intended for conveyance
 nor is it a survey.

Note- Assessor's block Numbers Shown in Ellipses
 Assessor's Parcel Numbers Shown in Circles