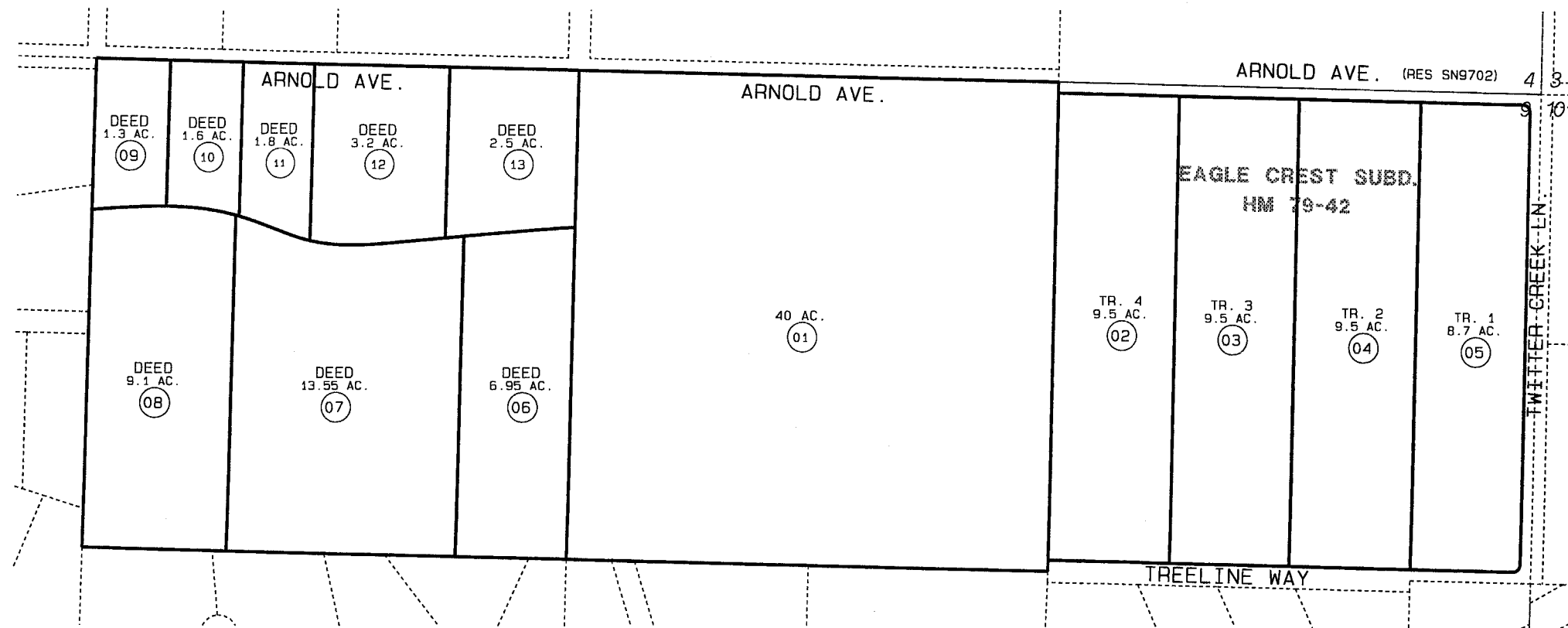


NE1/4 NW1/4 AND N1/2 NE1/4 SEC. 9, T6S, R13W, S.M.

173-660

5



5

BK  
174



DATE: MARCH 23, 2001  
 FOR 2001 ASSESSMENT ROLL  
 DELETE    ADD    REVISED  
 TO  
 17305305 6-13

Assessor's Map  
 Kenai Peninsula Borough

BK  
174

THIS MAP IS PREPARED FOR KENAI PENINSULA BOROUGH ASSESSING DEPT. USE ONLY AND IS NOT INTENDED FOR CONVEYANCE, NOR IS IT A SURVEY  
 NOTE - Assessor's Block Numbers Shown in Ellipses  
 Assessor's Parcel Numbers Shown in Circles