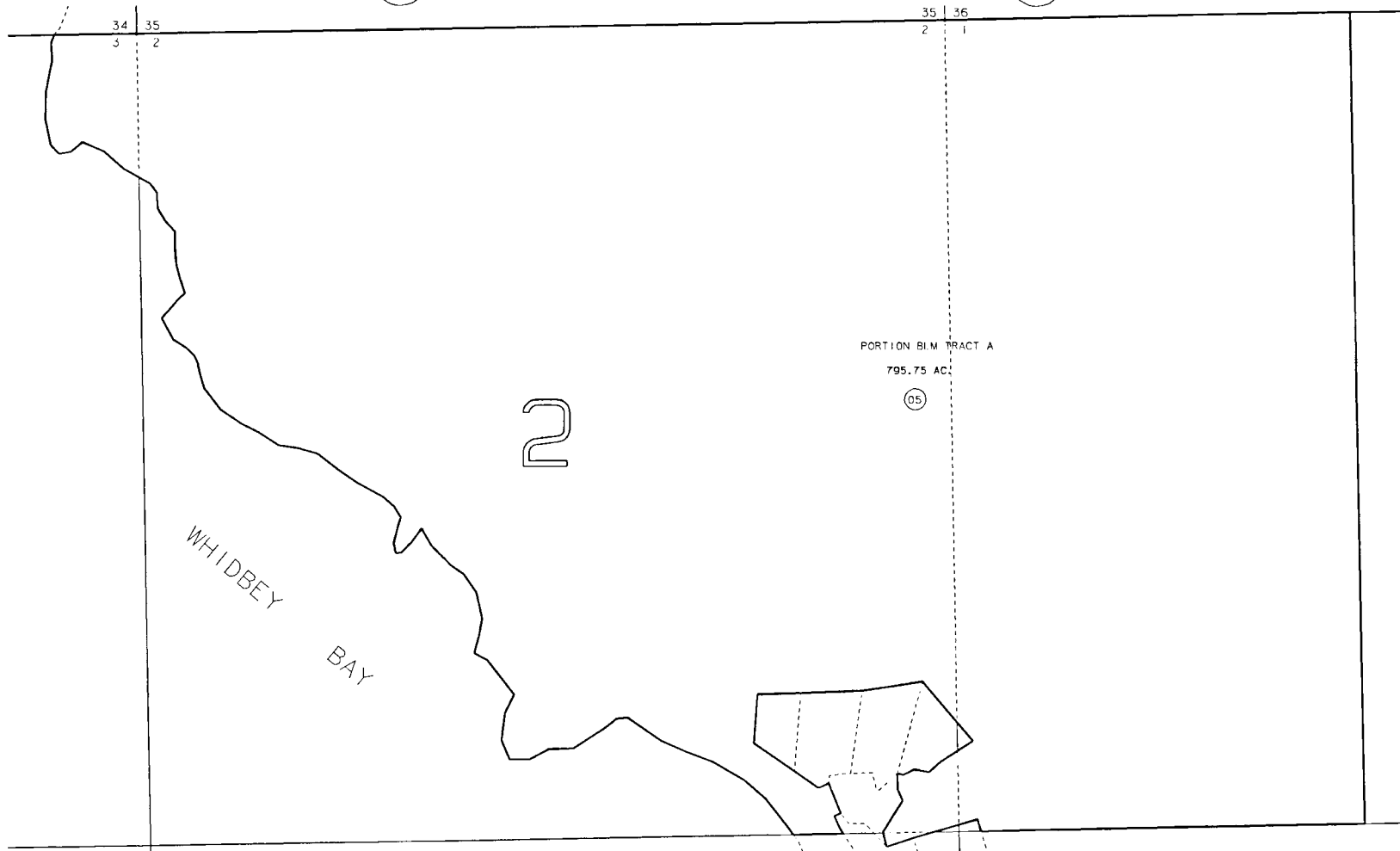


SECTIONS 2 & 3 & W 1/2 SECTION 1, T3S, R3E, SEWARD MERIDIAN

189-086

085

08



DATE: AUGUST 23, 1993

FOR 1994 ASSESSMENT ROLL		
DELETE	ADD	REVISED
		05

NOTE - Assessor's Block Numbers Shown In Ellipses
Assessor's Parcel Numbers Shown In Circles

Assessor's Map
Kenai Peninsula Borough

THIS MAP IS PREPARED FOR KENAI PENINSULA BOROUGH ASSESSING DEPT. USE ONLY AND IS NOT INTENDED FOR ANY OTHER USE OR REPRESENTATION