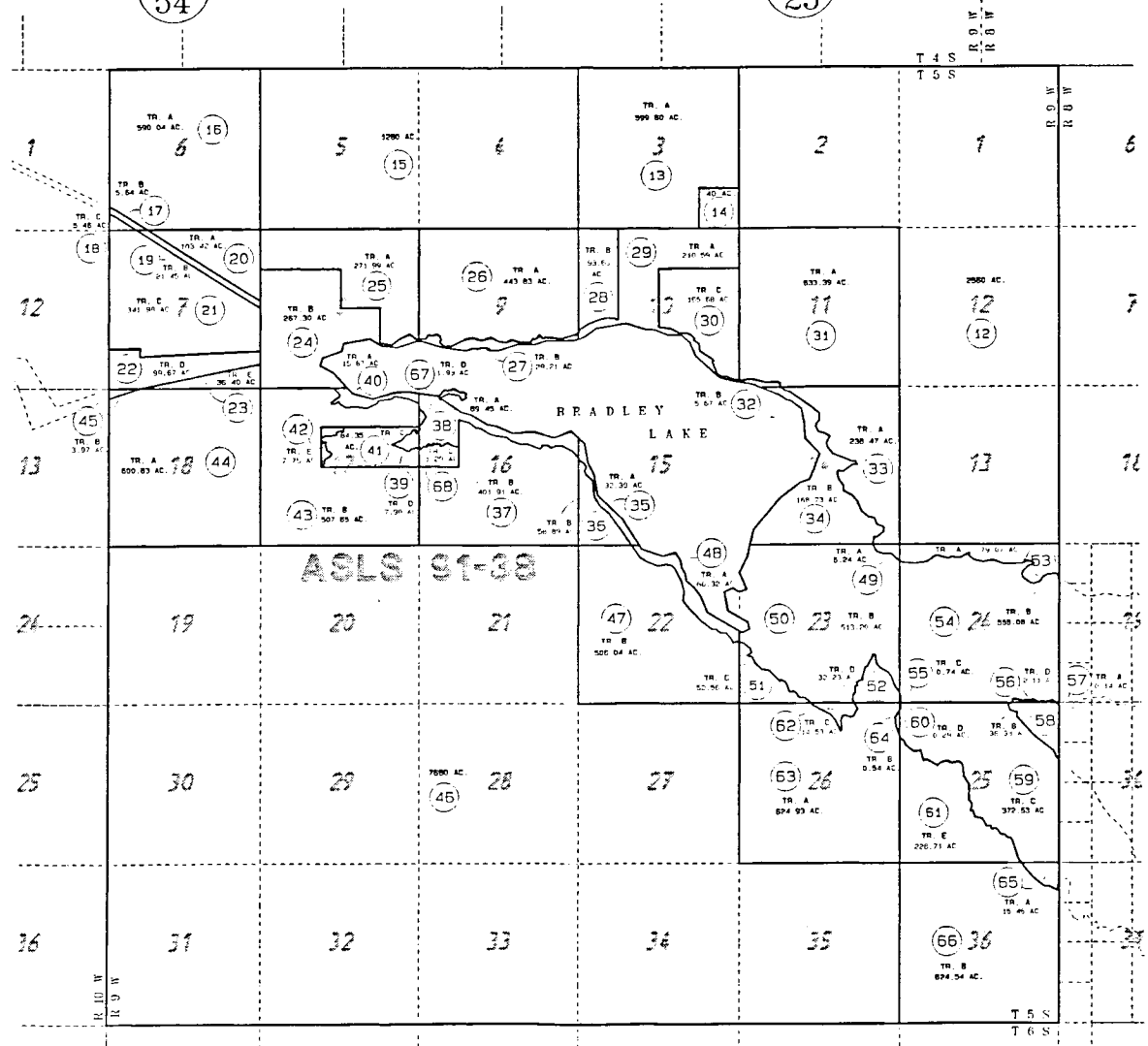


185 T5S, R9W, SEWARD MERIDIAN 185

193-013



011

2

5

DATE: MAR. 9, 1995

FOR 1995 ASSESSMENT ROLL

DELETE	ADD	REVISED
TO:		
67.6B		

Assessor's Map  
Kenai Peninsula Borough

ALASKA STATE LAND SURVEY 91-38 11M920046

THIS MAP IS PREPARED FOR KENAI PENINSULA BOROUGH ASSESSING DEPT USE ONLY AND IS NOT INTENDED FOR ANY OTHER USE OR REPRESENTATION

NOTE - Assessor's Block Numbers Shown In Ellipses  
Assessor's Parcel Numbers Shown In Circles