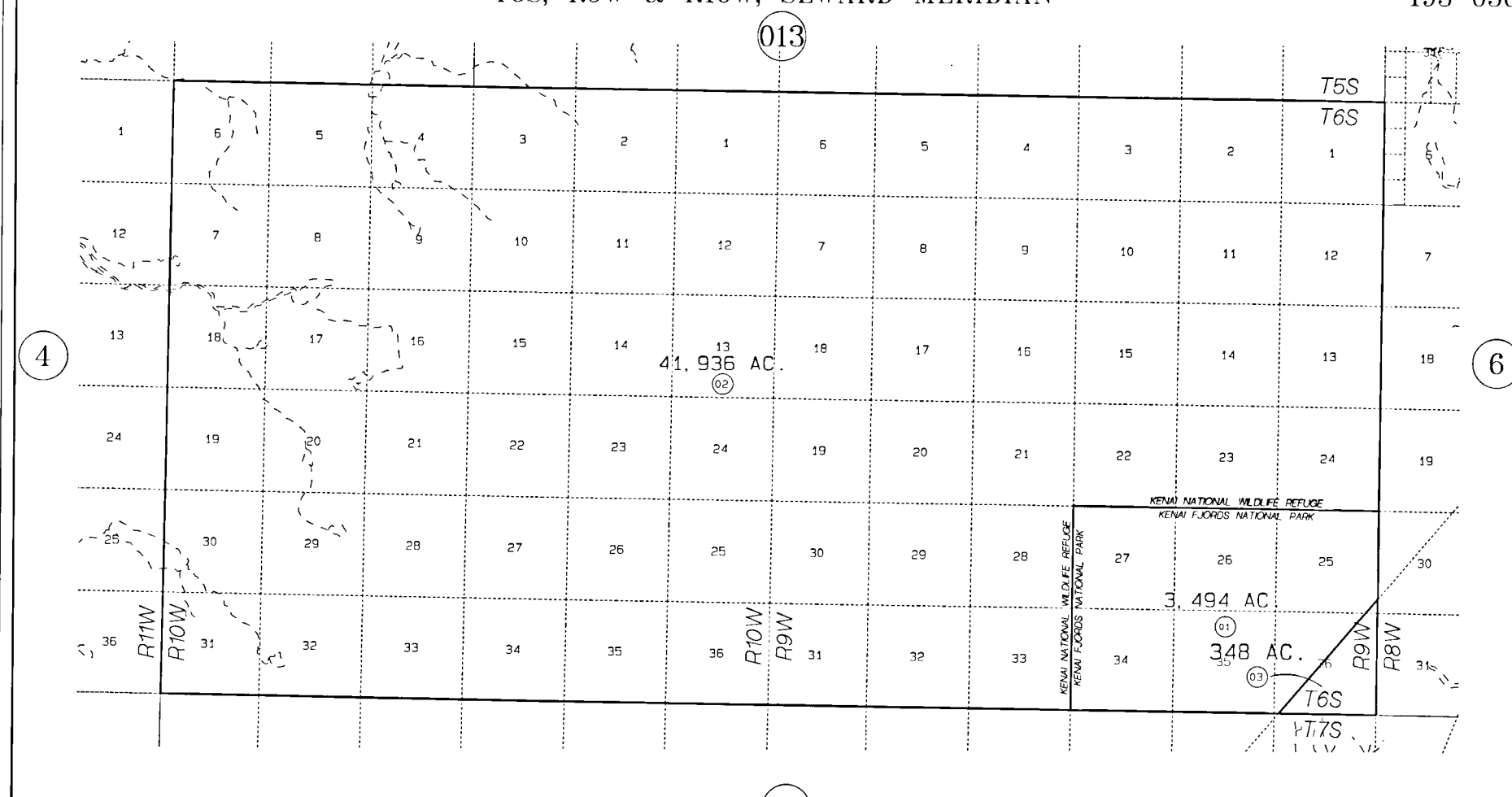


T6S, R9W & R10W, SEWARD MERIDIAN

193-050



DATE: FEB. 23, 2001

FOR 2001 ASSESSMENT ROLL		
DELETE	ADD	REVISED
	3	
	1,2	

Assessor's Map  
Kenai Peninsula Borough

THIS MAP IS PREPARED FOR KENAI PENINSULA BOROUGH ASSESSING DEPT USE ONLY AND IS NOT INTENDED FOR ANY OTHER USE OR REPRESENTATION  
NOTE - Assessor's Block Numbers Shown in Ellipses Assessor's Parcel Numbers Shown in Circles