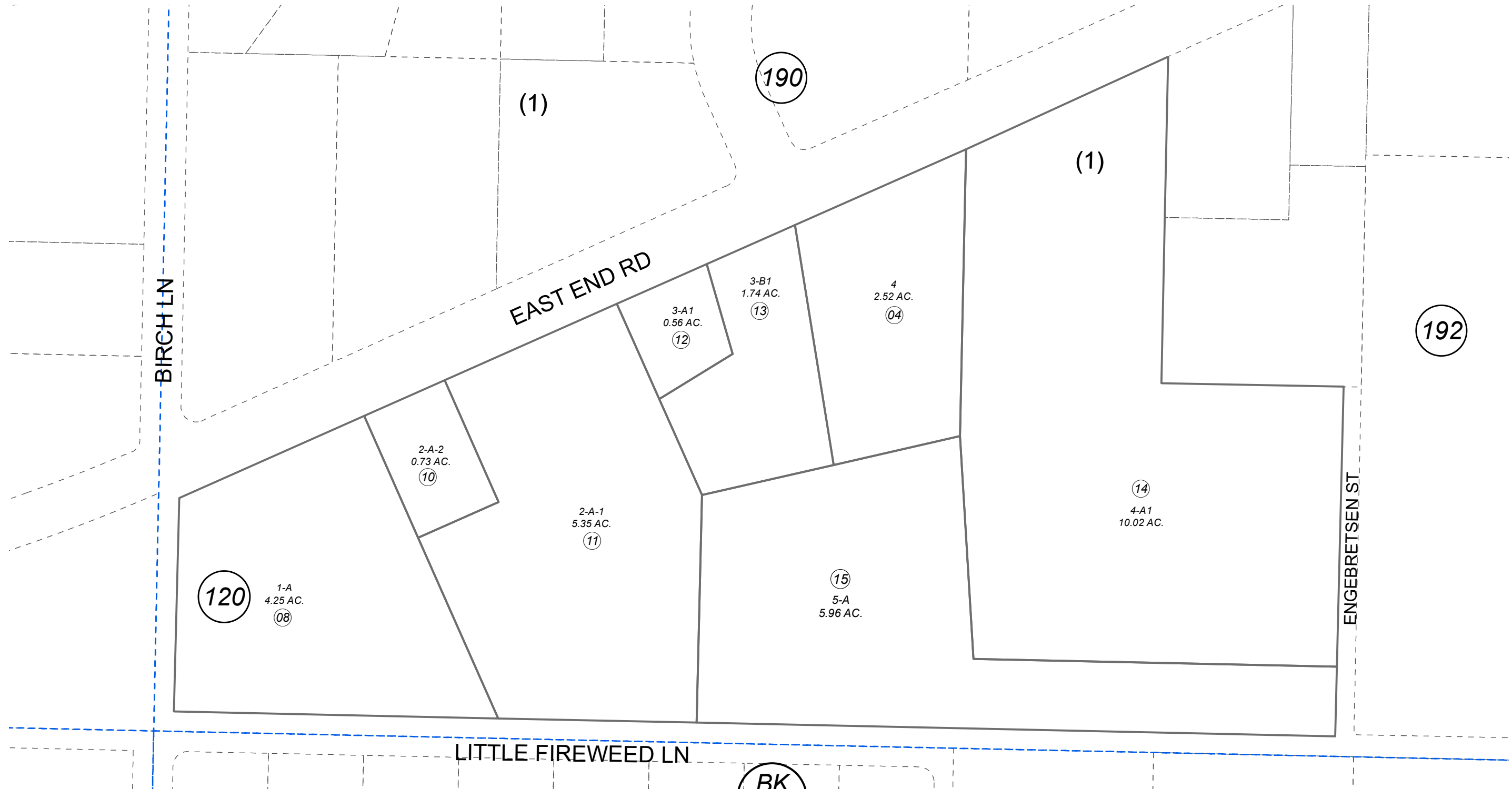


POR. SW1/4 SEC. 11, T06S, R13W, S.M.

174-191



0 50 100 200 Feet

JANUARY 17, 2023

For 2022 assessment roll		
Delete	Add	Revise
To		
05, 19287	14,15	

Assessor's Map
Kenai Peninsula Borough

COMMERCE PARK SUB □ HM0850014
 COMMERCE PARK RESUB LOT 3 □ HM0970020
 COMMERCE PARK 1997 ADDN □ HM0970022
 COMMERCE PARK SUB 2005 ADDN □ HM2005090
 COMMERCE PARK SUB 2018 □ HM2018001
 PUFFIN ACRES BAYWELD 2022 REPLAT HM2022037

This map is prepared for Kenai Peninsula Borough Assessing Dept. use only and is not intended for conveyance nor is it a survey.

Note- Assessor's block Numbers Shown in Elipses
Assessor's Parcel Numbers Shown in Circles