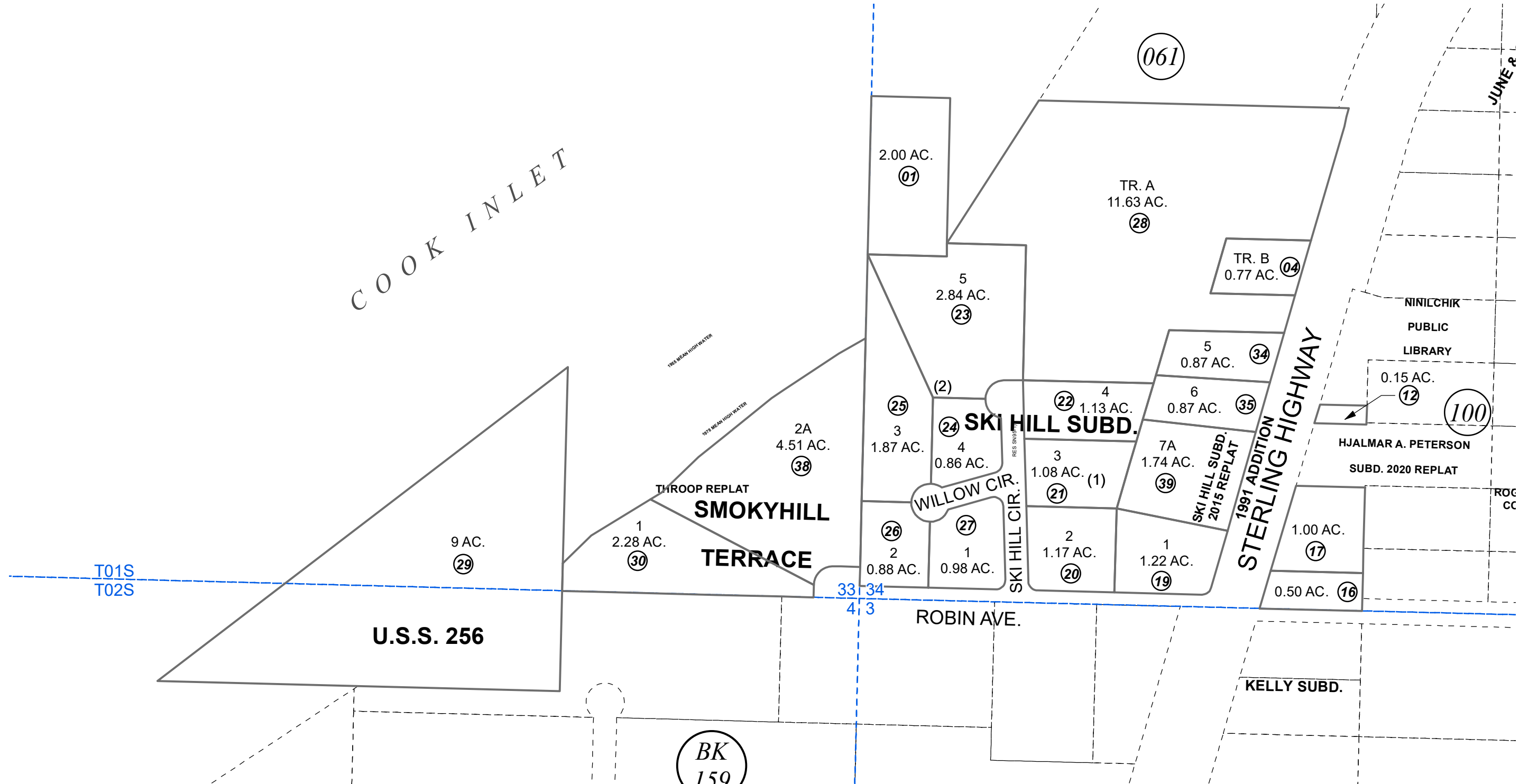


POR. SW1/4 SW1/4 SEC. 34, T01S, R14W, S.M.

157-150

COOK INLET



T01S
T02S

U.S.S. 256

BK
159

DECEMBER 31, 2020

For 2021 assessment roll		
Delete	Add	Revise
	To	
13	157-100+	

- HM0770032 HJALMAR A PETERSON SUB
- HM0750058 SKI HILL SUB
- HM0760074 NINILCHIK SCHOOL SITE TR A REPLAT
- HMU000256 US SURVEY 256
- HM0790127 SMOKYHILL TERRACE SUB
- HM0910048 SKI HILL SUB 1991 ADDN
- HM2000040 SMOKYHILL TERRACE THROOP REPLAT
- HM2015035 SKI HILL SUB 2015 REPLAT

Assessor's Map
Kenai Peninsula Borough



0 50 100 200 Feet

This map is prepared for Kenai Peninsula Borough Assessing Dept. use only and is not intended for conveyance nor is it a survey.

Note- Assessor's block Numbers Shown in Ellipses
Assessor's Parcel Numbers Shown in Circles