

080

130

19

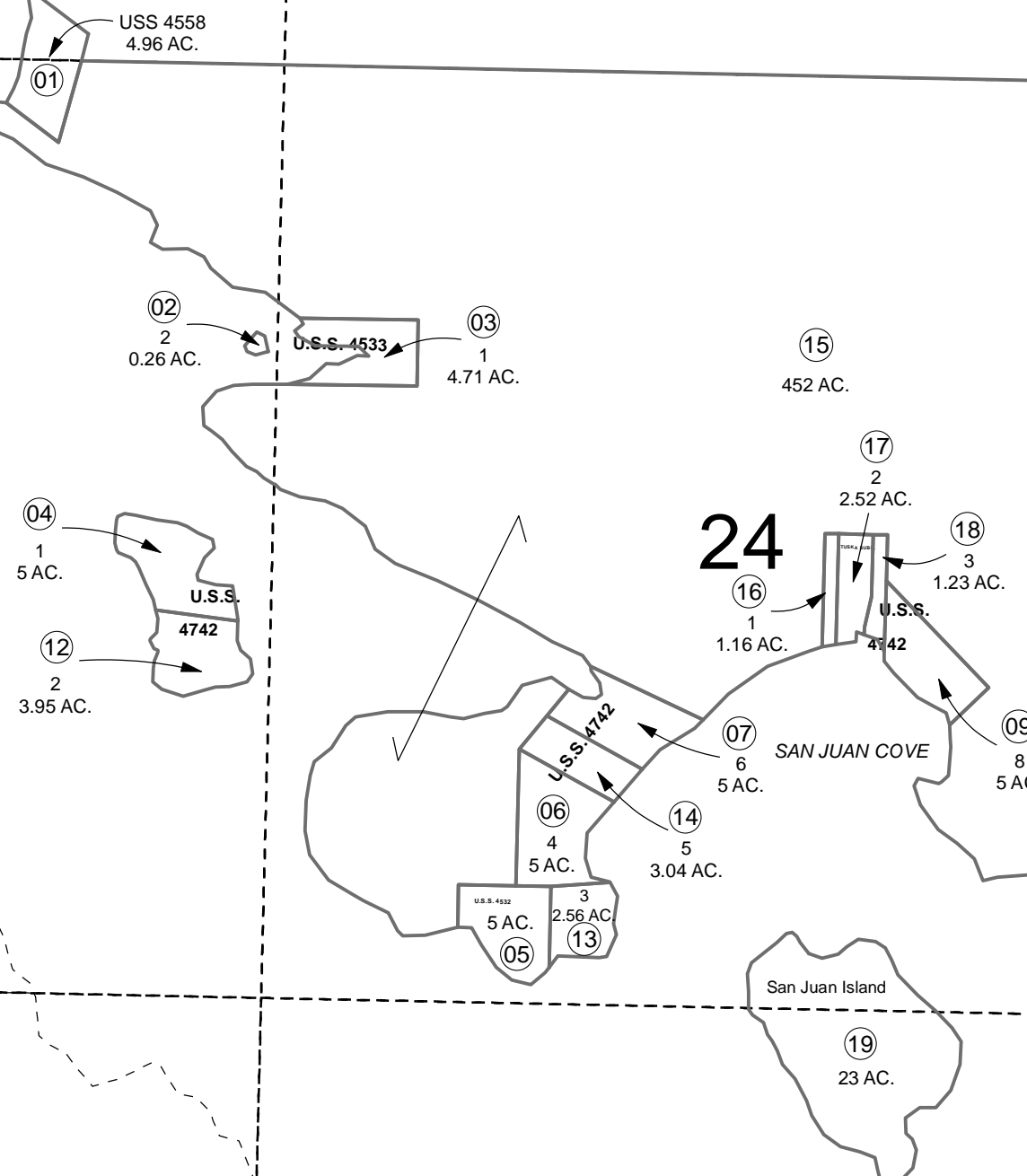
BK 191

23 TUTKA BAY

24

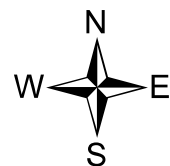
SAN JUAN COVE

San Juan Island



JULY 17, 2013

For 2014 assessment roll		
Delete	Add	Revise
To		
11		



0 250 500 1,000 Feet

Assessor's Map
Kenai Peninsula Borough

US SURVEY 4533 SL0004533
 US SURVEY 4742 SL0004742
 US SURVEY 4532 SL0004532
 TUSKA SUB SL0970004

Note- Assessor's block Numbers Shown in Elipses
 Assessor's Parcel Numbers Shown in Circles

This map is prepared for Kenai Peninsula Borough Assessing Dept. use only and is not intended for conveyance nor is it a survey.