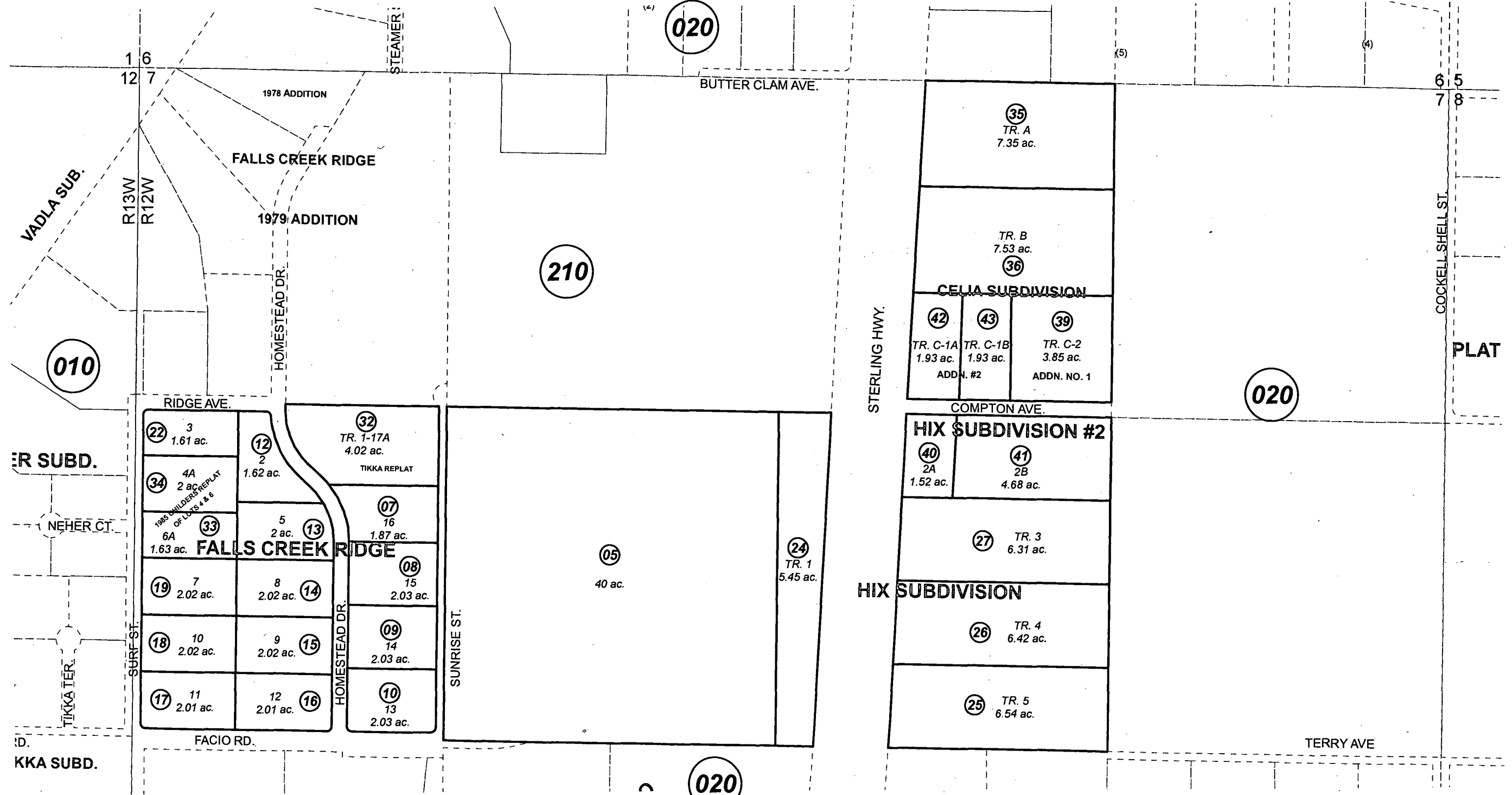


NW1/4 & W1/2 NE1/4 SEC. 7, T01N, R12W, S.M.

139-170



JANUARY 2, 2013

For 2013 assessment roll		
Delete	Add	Revise
	To	
38	42,43	

Assessor's Map
Kenai Peninsula Borough

FALLS CREEK RIDGE SUB HM0780023
 HIX SUB HM0780068
 FALLS CREEK RIDGE SUB TIKKA REPLAT OF HM0830004
 FALLS CREEK RIDGE SUB 1985 CHILDERS HM0850110
 CELIA SUB HM0940046
 CELIA SUB ADDN NO 1 HM2002015
 HIX SUB #2 HM2006061
 CELIA SUB ADDN #2 HM2012053

This map is prepared for Kenai Peninsula Borough Assessing Dept. use only and is not intended for conveyance nor is it a survey.
 Note- Assessor's block Numbers Shown in Ellipses
 Assessor's Parcel Numbers Shown in Circles