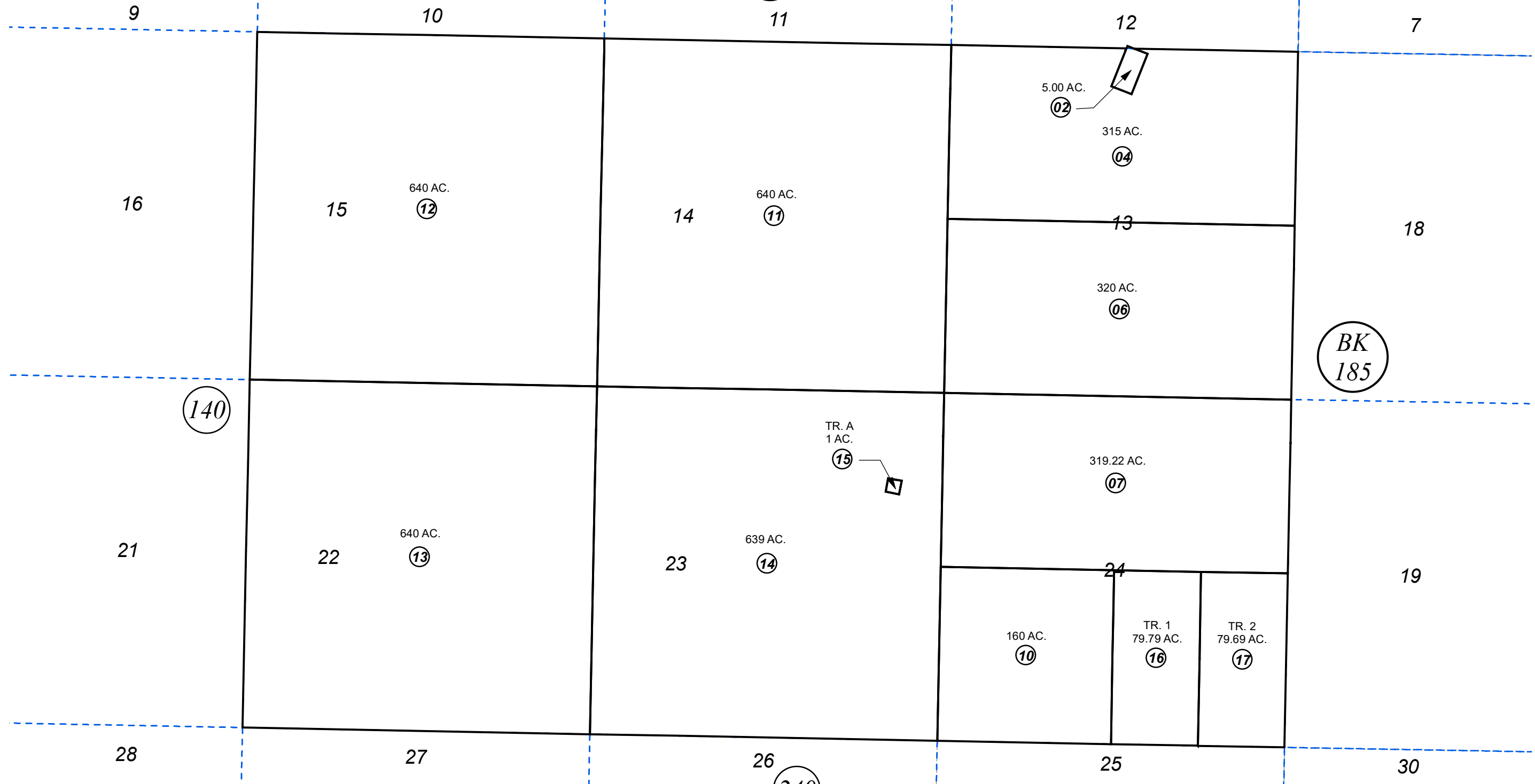


SEC. 13-15 AND 22-24, T04S, R12W, S.M.

070

165-150



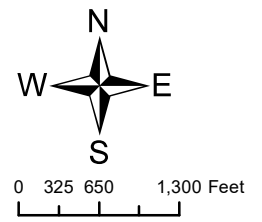
140

BK
185

240

AUGUST 26, 2019

For 2020 assessment roll		
Delete	Add	Revise
To		
09	16,17	



Assessor's Map
Kenai Peninsula Borough

HM0004719 US SURVEY 4719
HM0990049 ALASKA STATE LAND SURVEY 97-24
HM2019020 HOMER HIGHLANDS SUB

This map is prepared for Kenai Peninsula Borough Assessing Dept. use only and is not intended for conveyance nor is it a survey.
Note- Assessor's block Numbers Shown in Ellipses
Assessor's Parcel Numbers Shown in Circles