

EQ1/2 E1/2 SEC. 35, T4S, R14W, S.M.

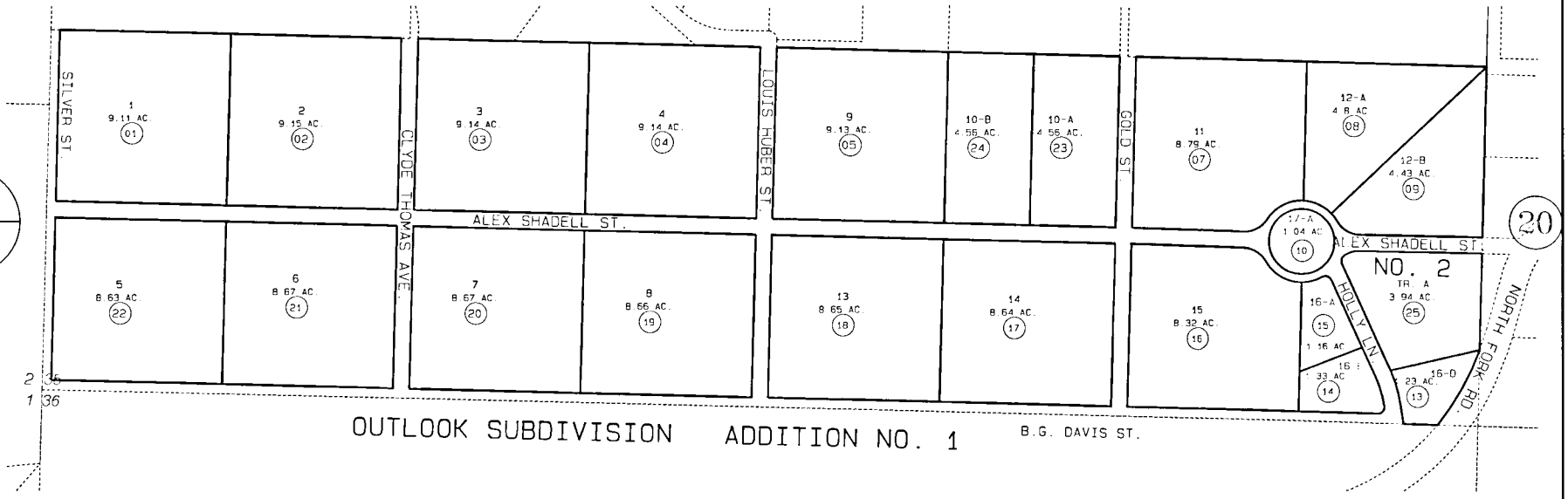
165-590

20

56

20

BK
171



OUTLOOK SUBDIVISION ADDITION NO. 1

20

DATE: MARCH 1, 2001

FOR 2001 ASSESSMENT ROLL

DELETE ADD REVISED

TO
11.12 25

Assessor's Map
Kenai Peninsula Borough

HM0790022 OUTLOOK SUB ADDN NO 1
HM0830123 OUTLOOK SUB ADDN NO 1 AMENDED
HM0870063 OUTLOOK SUB LOTS 10-A & 10-B
HM2000032 OUTLOOK SUB NO 2

THIS MAP IS PREPARED FOR KENAI PENINSULA BOROUGH ASSESSING DEPT. USE ONLY AND IS NOT INTENDED FOR CONVEYANCE NOR IS IT A SURVEY

NOTE - Assessor's Block Numbers Shown In Ellipses Assessor's Parcel Numbers Shown In Circles