

170

170

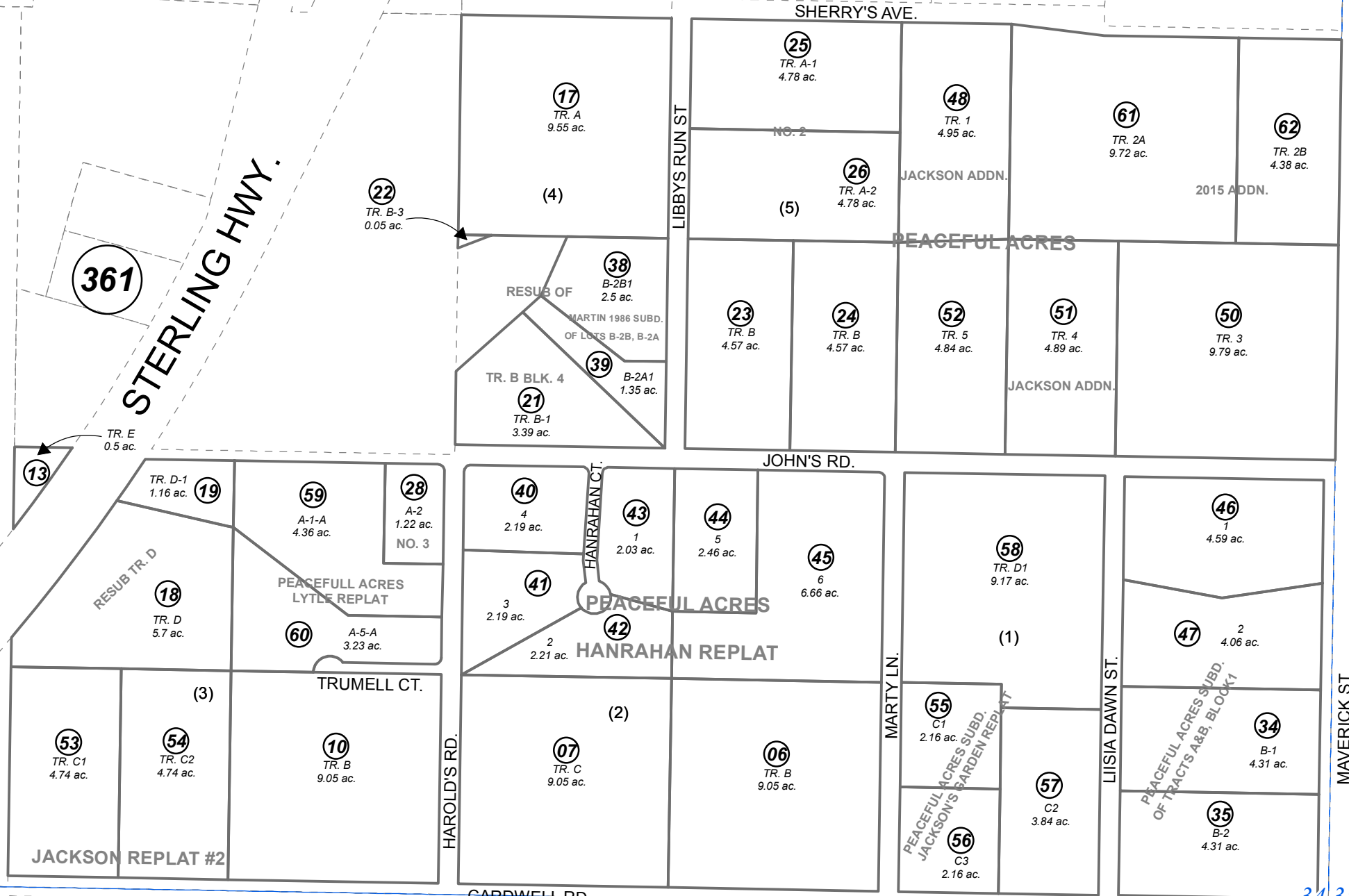
BK  
133

- PEACEFUL ACRES SUB KN0740018
- PEACEFUL ACRES SUB TRACT D KN0740018
- PEACEFUL ACRES SUB RESUB OF TR D BLK 3 KN0770093
- PEACEFUL ACRES SUB RESUB OF TR B BLK 4 KN0790168
- PEACEFUL ACRES SUB NO 2 KN0800013
- PEACEFUL ACRES SUB NO 3 KN0830138
- PEACEFUL ACRES SUB RESUB OF TRACTS A & B KN0850060
- PEACEFUL ACRES SUB MARTIN 1986 RESUB OF KN0860030
- PEACEFUL ACRES SUB HANRAHANS REPLAT KN0890011
- PEACEFUL ACRES SUB LOT A1 & A2 KN0970049
- PEACEFUL ACRES SUB JACKSON ADDN KN2002049
- PEACEFUL ACRES SUB JACKSON REPLAT #2 KN2003016
- PEACEFUL ACRES SUB JACKSON'S GARDEN REPLAT KN2006112
- PEACEFUL ACRES LYTLLE REPLAT KN2012078
- PEACEFUL ACRES 2015 ADDN KN2015052

TRACT A OF  
IAAGENSEN HMSTD.

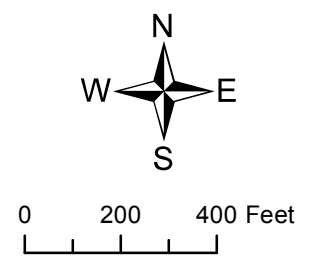
STERLING HWY.

170



SEPTEMBER 22, 2015

For 2016 assessment roll		
Delete	Add	Revise
To		
49	61,62	



Assessor's Map  
Kenai Peninsula Borough

This map is prepared for Kenai Peninsula Borough Assessing Dept. use only and is not intended for conveyance nor is it a survey.  
Note- Assessor's block Numbers Shown in Elipses  
Assessor's Parcel Numbers Shown in Circles