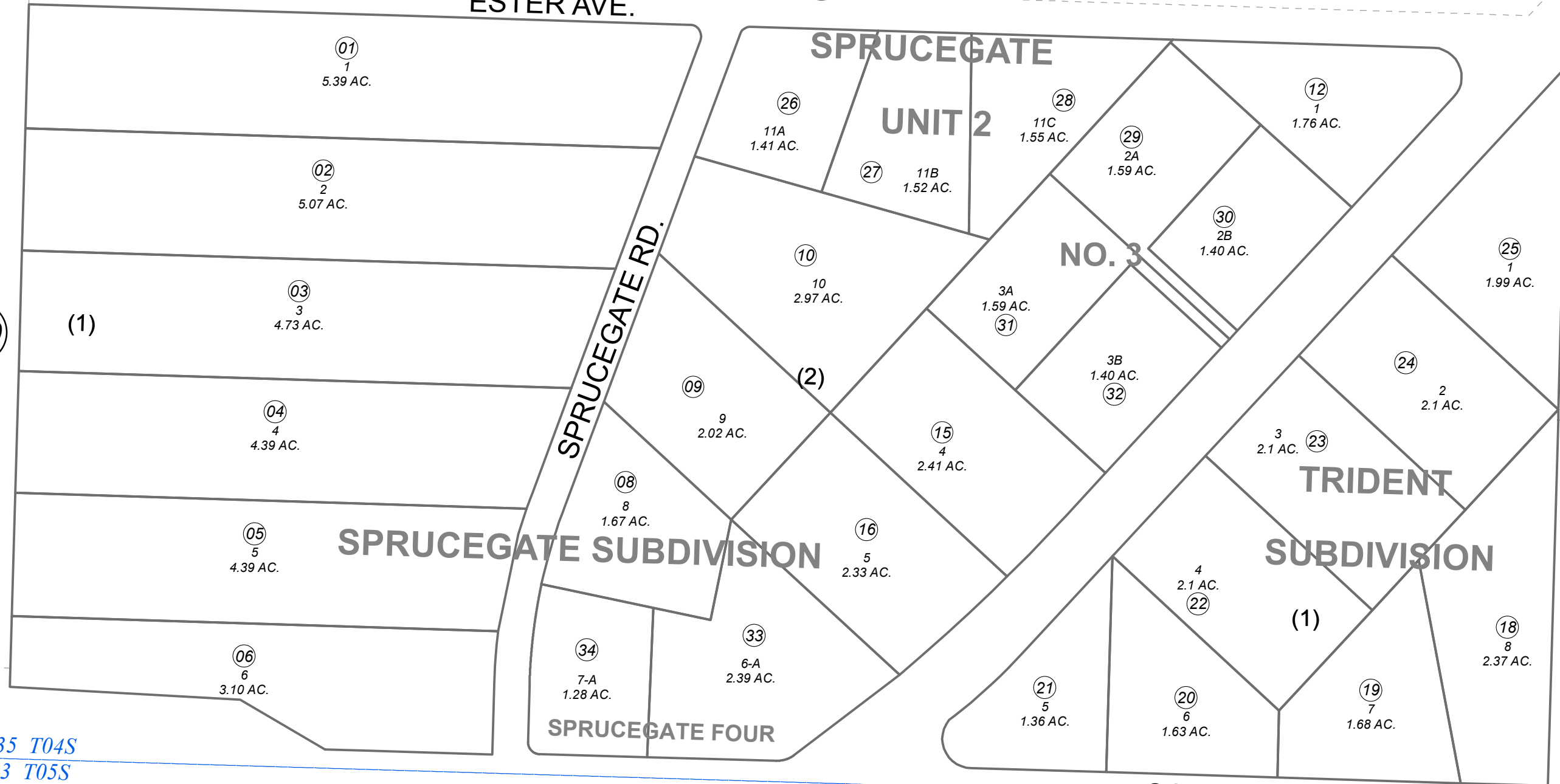


POR. S1/2 SEC. 35, T04S, R15W, S.M.

165-460

162

ESTER AVE.



720

163

BK 169

COLEMAN LANTERN AVE.

SEC. 35 T04S  
SEC. 3 T05S

FEBRUARY 13, 2017

For 2017 assessment roll		
Delete	Add	Revise
To		
		06
(ACREAGE CHANGE)		



0 80 160 Feet

Assessor's Map  
Kenai Peninsula Borough

SPRUCEGATE SUB HM0760059  
 TRIDENT SUB HM0760069  
 SPRUCEGATE SUB UNIT 2 HM0850068  
 SPRUCEGATE SUB NO 3 HM2003092  
 SPRUCEGATE FOUR HM2014047

This map is prepared for Kenai Peninsula Borough Assessing Dept. use only and is not intended for conveyance nor is it a survey.  
 Note- Assessor's block Numbers Shown in Ellipses  
 Assessor's Parcel Numbers Shown in Circles