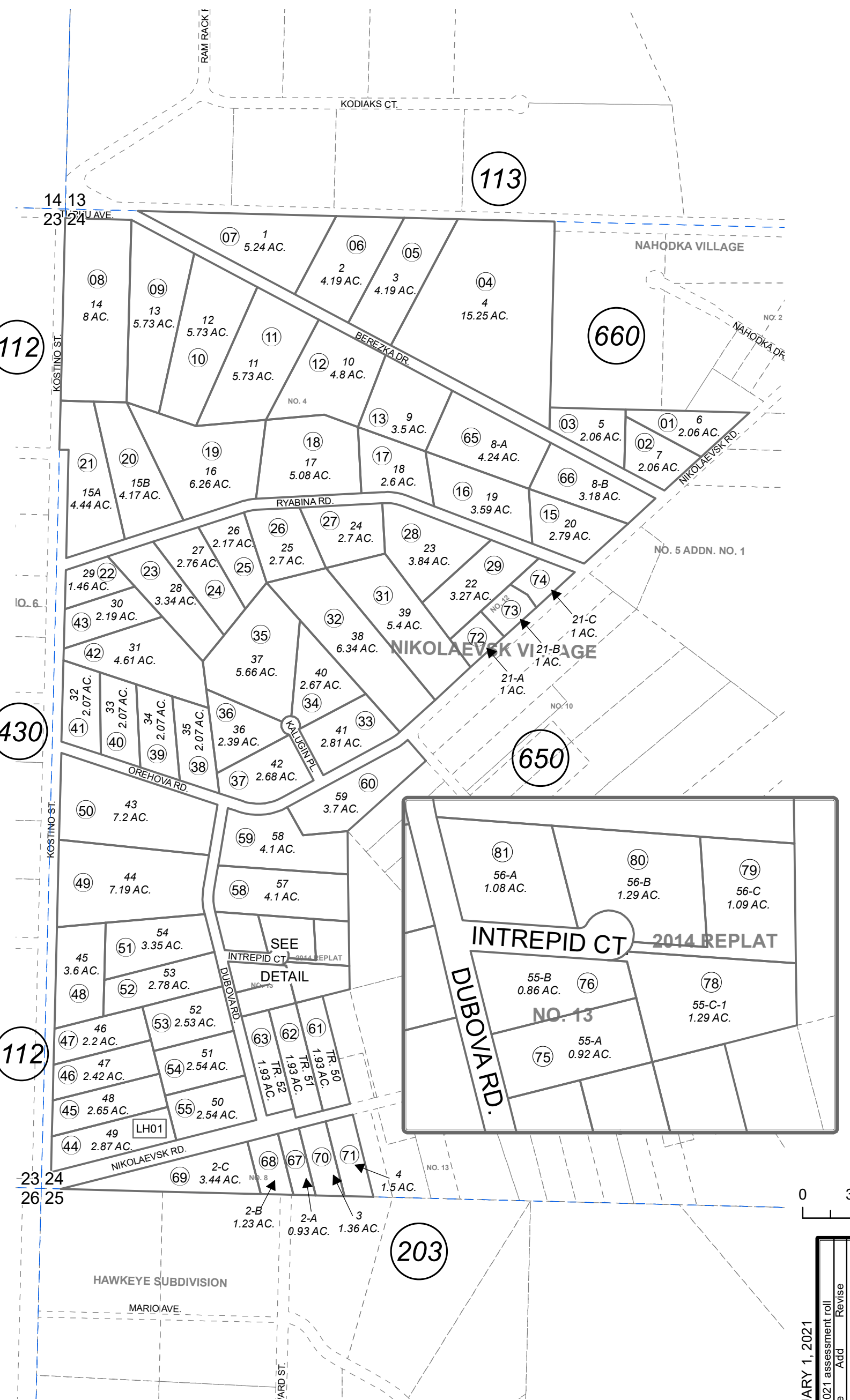


165-640

POR. SEC. 24, T04S, R14W, S.M.



This map is prepared for Kenai Peninsula Borough Assessing Dept. use only and is not intended for conveyance nor is it a survey.

Note- Assessor's block Numbers Shown in Ellipses
Assessor's Parcel Numbers Shown in Circles

- NIKOLAEVSK VILLAGE NO 4 HM0800033
- NIKOLAEVSK VILLAGE NO 5 HM0800099
- NIKOLAEVSK VILLAGE NO 12 HM2011051
- NIKOLAEVSK VILLAGE NO 13 HM2012059
- NIKOLAEVSK VILLAGE SUB 2014 REPLAT HM2015008

Assessor's Map
Kenai Peninsula Borough



0 300 600 Feet

FEBRUARY 1, 2021	
For 2021 assessment roll	
Delete	Revise
Add	
To	44
	(ADDED LEASEHOLD)