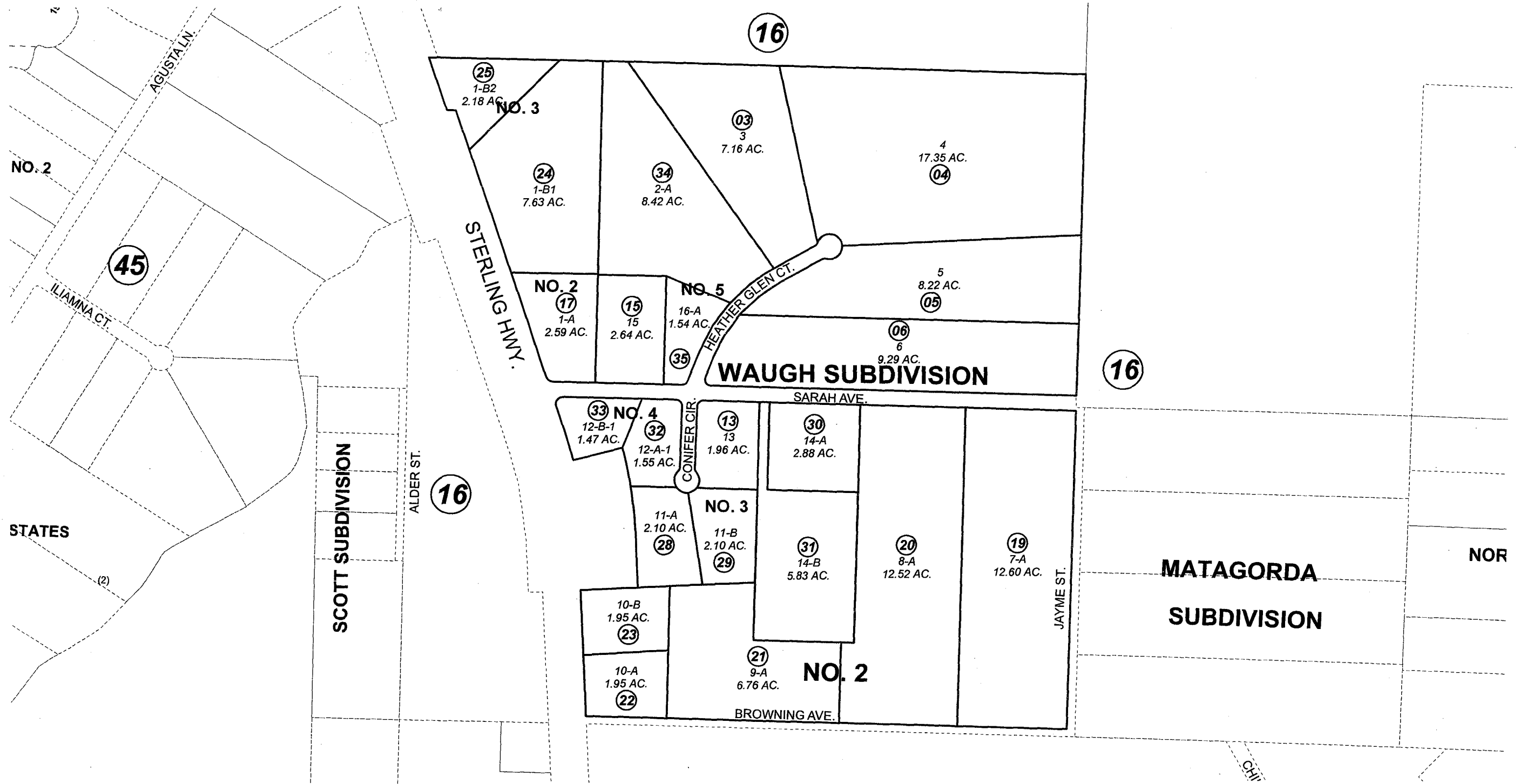
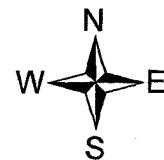


POR. S1/2 SE1/4 SEC. 27 & N1/2 NE1/4 SEC. 34, T04S, R15W, S.M. 165-164



JULY 25, 2008

For 2009 assessment roll		
Delete	Add	Revise
To		
2,16	34,35	



Assessor's Map
Kenai Peninsula Borough

WAUGH SUBD HM2001026
 WAUGH SUBD NO 2 HM2005100
 WAUGH SUBD NO 3 HM2007083
 WAUGH SUBD NO 4 HM2008038
 WAUGH SUBD NO 5 HM2008042

This map is prepared for Kenai Peninsula Borough Assessing Dept. use only and is not intended for conveyance nor is it a survey.

Note- Assessor's block Numbers Shown in Elipses
Assessor's Parcel Numbers Shown in Circles