

N 1/2 NE 1/4 SEC. 20, T.5N, R.11W, S.M.

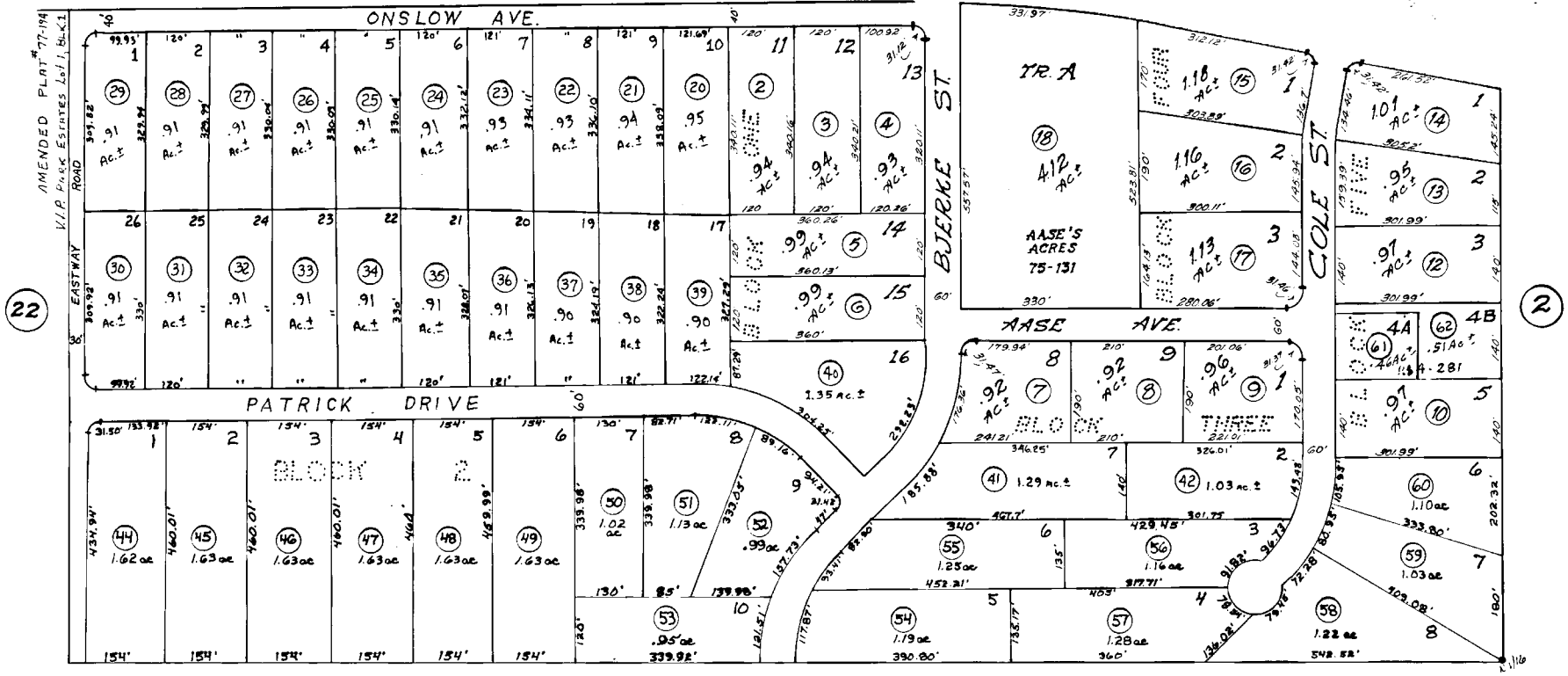
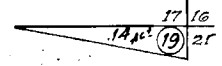
BK. 49



KALIFONSKY BEACH

ROAD

ROAD



POR. BLOCK ONE
77-59

POR. BLOCK ONE & THREE
77-127

V.I.P. PARK ESTATES

ADDITION NO.1

76-108

NO. 2 = K 84-281 (Lots 4A & B & C & D)

Assessor's Map

Kenai Peninsula Borough, Alaska

BLK 2, POR BLK'S 3, 5 K-79-95

NOTE - Assessor's Block Numbers Shown in Ellipses
Assessor's Parcel Numbers Shown in Circles