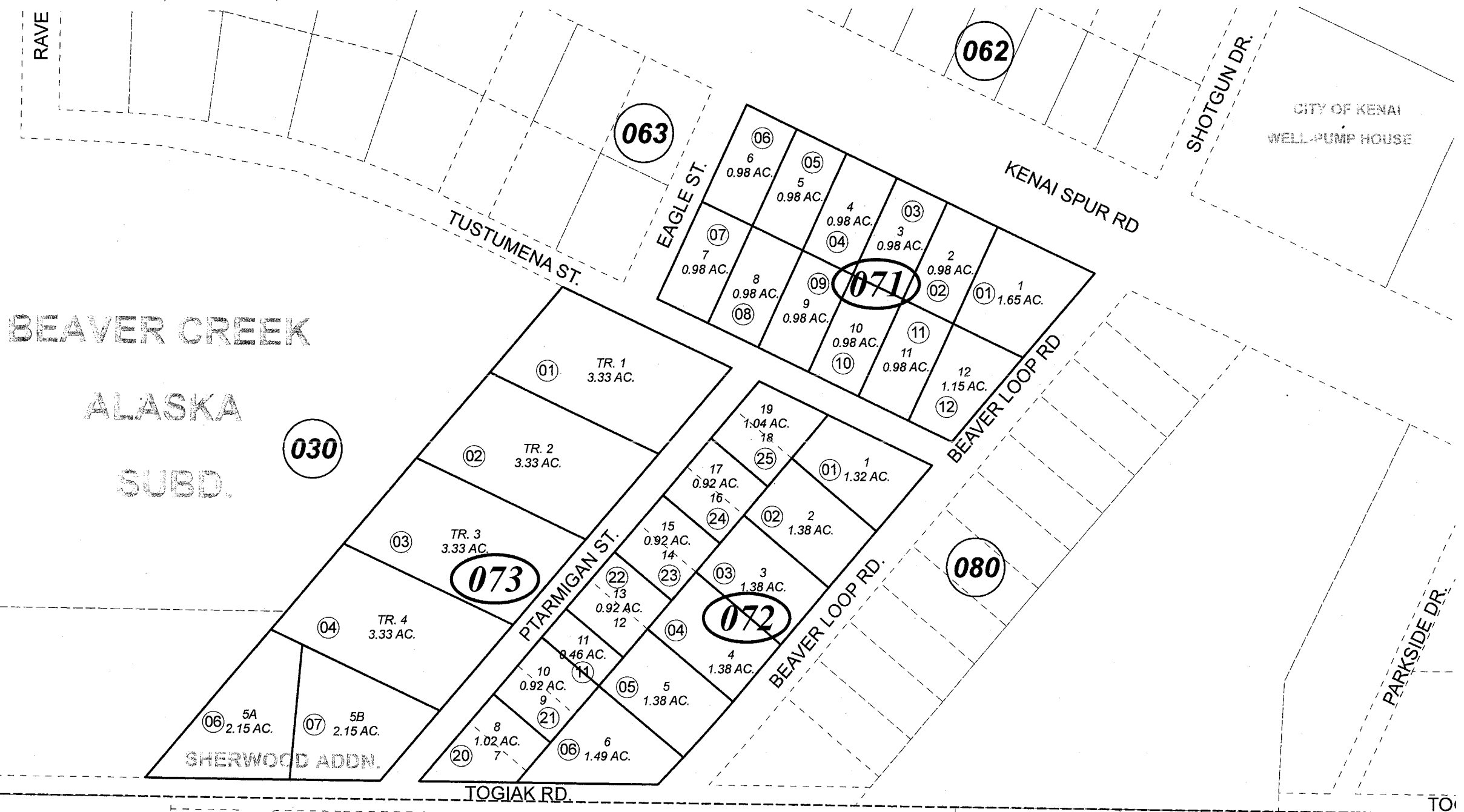


POR. SEC. 36, T06N, R11W, S.M.

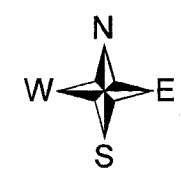
041-070



BEAVER CREEK
ALASKA
SUBD.

SHERWOOD ADDN.

CITY OF KENAI
WELL PUMP HOUSE



DECEMBER 28, 2007

For 2008 assessment roll		
Delete	Add	Revise
To		
07305	07306	
	07307	

Assessor's Map
Kenai Peninsula Borough

BEAVER CREEK ALASKA SUB AMENDED KN0810101
BEAVER CREEK ALASKA SUB SHERWOOD ADDN KN2007141

This map is prepared for Kenai Peninsula Borough Assessing Dept. use only and is not intended for conveyance nor is it a survey.
Note- Assessor's block Numbers Shown in Ellipses
Assessor's Parcel Numbers Shown in Circles