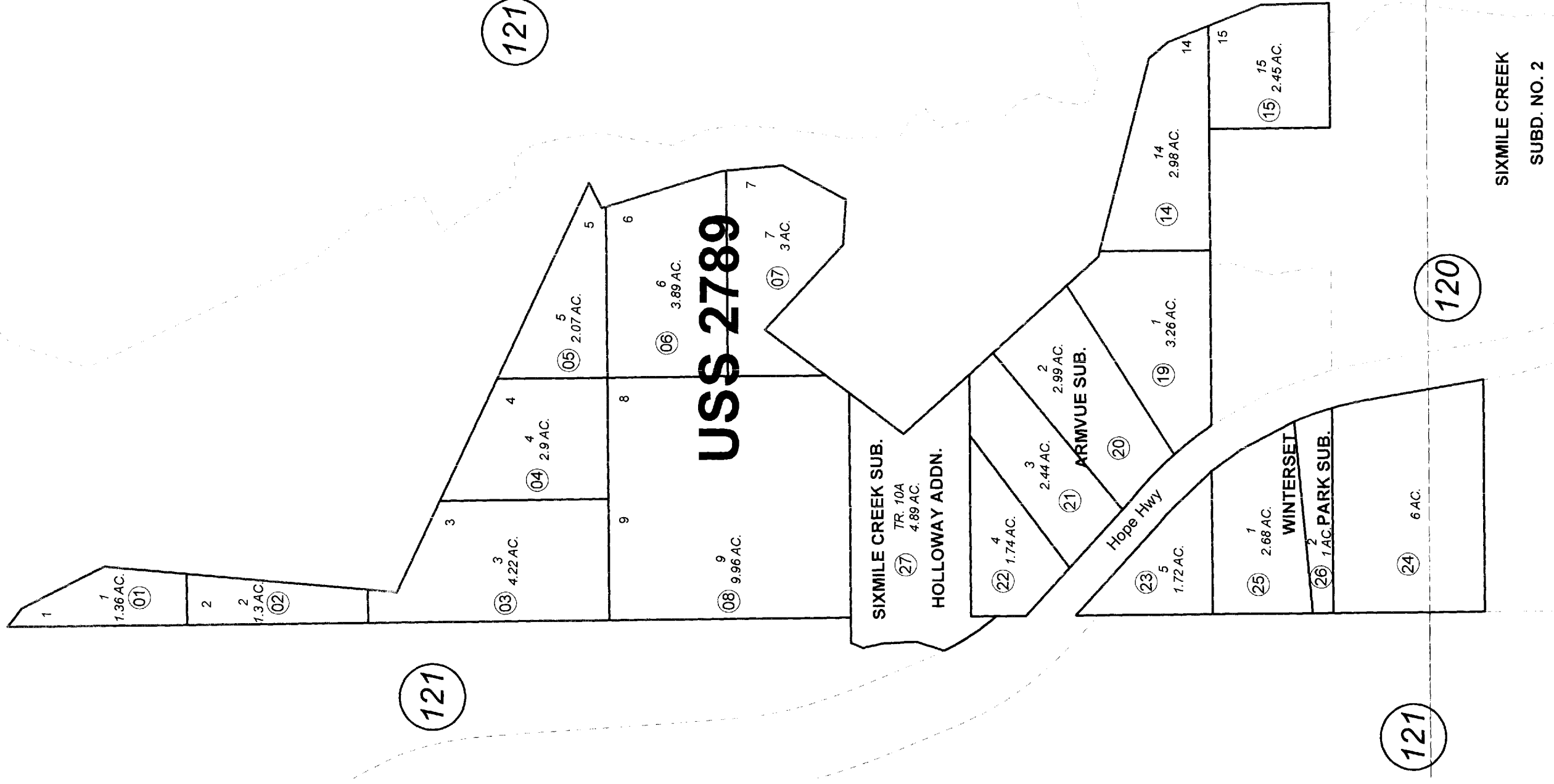


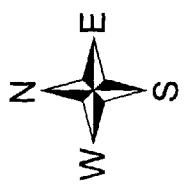
035-110

POR. SEC. 3 & 10, T09N, R1W, S.M.



JULY 22, 2008

For 2009 assessment roll	
Delete	Add
9	27
To	



Assessor's Map
Kenai Peninsula Borough

US SURVEY 2789 SW0002789
ARMVUE SUB SW0790010
WINTERSET PARK SUB SW0870013
SIXMILE CREEK SUB HOLLOWAY ADDN SW2008008

Note- Assessor's block Numbers Shown in Ellipses
Assessor's Parcel Numbers Shown in Circles

This map is prepared
for Kenai Peninsula
Borough Assessing Dept.
use only and is not
intended for conveyance
nor is it a survey.